

Software Version : EasyBuilder Pro V6.09.02.608

New Supported Models

cMT-SVR-100 (V2), cMT-SVR-200 (V2), cMT-G01X, cMT-G02X

Resolved Issues

1. The setting for using the popup keypad on the object is missing.
2. The hold control for Data Sampling is incorrectly set after using the import function.
3. The Trend Display object still updates with the latest data even when a historical file is selected.
4. Using the subcategory sorting function on the Event Log settings page may crash the software.

Software Version : EasyBuilder Pro V6.09.02.589

New Supported Models

cMT2078X (V2), cMT3072X2 (V2), cMT3072XH2 (V2), cMT3072XHT (V2), cMT3072XP (V2)

Resolved Issues

1. Fixed software crashes that occur when opening the System Parameter Settings window.
2. Fixed an issue where the window animation effect may not display correctly during window switching in pop-up mode with Indirect Windows.
3. Fixed efficiency issues that occur with Condition objects under certain circumstances.
4. Fixed the crash issue caused when the database server set in Data Sampling does not exist.
5. Fixed an issue where leading zero settings are lost after adjusting the font size of multi-selected Numeric objects.

Communication and Drivers

1. ***[Barcode/RFID Reader]***
Increased the maximum read length to 512 words.
2. ***[Beckhoff TwinCAT 3 ADS/AMS (Ethernet)]***
Fixed an issue where the disconnection of one device in a multi-connection setup may result in the remaining devices also becoming disconnected.
3. ***[Beckhoff TwinCAT PLC - Free Tag Names (Ethernet)]***
Fixed an issue where address offsets occur after decompiling project files with bit arrays that do not start from zero.
4. ***[Fuji SPH2000/3000 IEC Mode (Ethernet)]***
Fixed communication issues with IW/QW/IX/QX.
5. ***[KOYO Do-more (Ethernet)]***
Fixed an issue where the disconnection of one device in a multi-connection setup may result in the remaining devices also becoming disconnected.
6. ***[Rockwell EtherNet/IP (CompactLogix) - Free Tag Names]***
[Rockwell EtherNet/IP (ControlLogix) - Free Tag Names]
[Rockwell ControlLogix - Free Tag Names]

Fixed data access issues with multi-dimensional array tags and index registers.

7. [YASKAWA DX100/DX200/FS100/YRC1000 Robot Controller (Ethernet)]

Fixed an issue where specific commands do not function.

Software Version : EasyBuilder Pro V6.09.02.510

New Features

1. Added support for touch gestures for cMT-FHDX-820.

Resolved Issues

1. Updated the minimum window size limit for cMT Viewer, changing it from 500 x 500 to 100 x 100.
2. Fixed an issue that blocked data reception in the advanced JSON format for MQTT topic subscriptions when objects or values are not set as "Required for incoming messages".
3. Fixed an issue with cMT Diagnoser's watch address configuration where the string length cannot be set when configuring string tags for certain drivers.

Communication and Drivers

1. **[Beckhoff TwinCAT PLC - Free Tag Names (Ethernet)]**

Fixed an issue with read errors caused by insufficient buffer memory.

2. **[KEYENCE KV-8000 (Symbolic) (Ethernet)]**

Fixed an issue where unpaired double quotes (") in the comment field caused import failures.

3. **[LS XBM/XBC Cnet]**

[LS XBM/XBC FEnet (Ethernet)]

[LS XBM/XBC/XGK CPU DIRECT]

[LS XEC FEnet (Ethernet)]

Expanded KW, LW, RW, and WW data type addresses and introduced a new ZRW address.

4. **[OPC UA Client]**

Added support for BaseDataType.

5. **[Rockwell CompactLogix - Free Tag Names]**

[Rockwell EtherNet/IP (CompactLogix) - Free Tag Names]

[Rockwell EtherNet/IP (ControlLogix) - Free Tag Names]

Fixed an issue with incorrect tag mapping when using multi-dimensional array tags in conjunction with index registers.

Software Version : EasyBuilder Pro V6.09.02.451

Resolved Issues

1. Fixed an issue where direct and indirect windows don't close correctly, hindering users from interacting with other objects.
2. Fixed an issue in the Find/Replace feature where search by range and replace using the [Shift to] mode do not function properly.

Communication and Drivers

1. **[Mitsubishi FX5U - Binary Mode (Ethernet)]**
Fixed an issue where a disconnection during UDP communication may trigger the Event Log.
2. **[Rockwell EtherNet/IP (CompactLogix) - Free Tag Names]**
Fixed an issue with string tag communication that may occur when importing tags using the [Two chars per word] format.

Software Version : EasyBuilder Pro V6.09.02.435

Resolved Issues

1. Added macro support for bulk writing of recipes.
1. Fixed errors that may occur in the find/replace feature during the replacement of addresses between different devices.
2. Fixed an issue that may cause the HMI to crash when changing pages during a file backup.
3. Fixed touch issues caused by overlapping ASCII objects configured as display-only (without input enabled).
4. Fixed compatibility issues related to the import/export of tags on the OPC UA server.
5. Fixed an issue that may cause EasyBuilder Pro to occasionally crash upon startup if no project file is opened immediately.
6. Fixed crashes resulting from changing device names when there are incomplete macro compilations.
7. Fixed unintended changes in the data type of the address for object security property settings during decompilation.
8. Enhanced the performance of the [Add to label tag library] feature.
9. Fixed crashes that may occur during decompilation when using the Data Matrix mode for 2D Barcode Display.
10. Fixed an issue where decimal points cannot be used in the dynamic limits of Numeric objects.
11. Fixed an issue where the fonts may be incorrect when files are converted to PDF using EasyConverter via the command line.

Communication and Drivers

1. **[Barcode/RFID Reader]**
Renamed from [USB Device], supports the built-in RFID Reader on the HMI.
2. **[CAN Bus 2.0A/2.0B General and SAE J1939 symbolic]**
Fixed the signal transmission cycle time.
3. **[Invit TS600 Series (Ethernet)]**
Added this driver.

4. *[KEYENCE KV-8000 (Symbolic) (Ethernet)]*

Fixed an issue where using offline simulation on the HMI can cause it to malfunction.

Software Version : EasyBuilder Pro V6.09.02.338

Resolved Issues

1. The precision limitation of the Float data type used for the preset data range of the Recipe Database may prevent the input of upper and lower limit values.
2. The keyboard input may not function properly in VNC Viewer under certain circumstances.

Communication and Drivers

1. **[Brother Speedio (Ethernet)]**
Fixed data reading issues.
2. **[CODESYS V3 (Ethernet)]**
Fixed an issue where the WSTRING data type cannot be used.
3. **[OPC UA Client]**
Added functionality to change the connected OPC UA Server via system registers.
4. **[Siemens S7-1200/S7-1500 (Absolute Addressing) (Ethernet)]**
Fixed the issue with tag import from TIA Portal V19 files.

Software Version : EasyBuilder Pro V6.09.02.315

New Features

1. **cMT2058XH:** Added support for Media Player, USB Camera, and IP Camera.

Resolved Issues

1. Fixed the delay issue that occurs when editing specific projects.
2. Fixed the crash issue that occurs when decompiling specific projects.
3. Fixed the issue where the upper and lower limits of the Meter Display object cannot be correctly set under certain circumstances.

Software Version : EasyBuilder Pro V6.09.02.310

New Features

4. [System Registers]

Added the following system registers:

LB-12824: Enable/disable VNC/WebView interlock

LW-12831: VNC/WebView interlock timeout (1 to 86400 seconds)

LW-12833: VNC/WebView interlock status bar (0: regular, 1: minimal)

LW-12834: System setting theme (0: light, 1: dark)

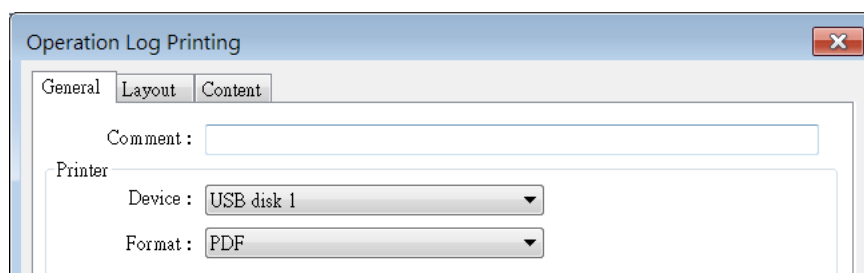
5. [Event Log]

Added an option to mark events triggered prior to shutdown as recovered when starting up.



6. [Operation Log Printing]

Added support for output in PDF file format.



7. [Recipe Database]

Added support for preset data ranges for numeric data types.

Recipes Item Information

Name :

Display Type :

Item size (WORD) :

Display width (Chars) :

Right of decimal Pt. :

Alignment :

Display name :

☐ Use label library

Data range limit

☒ Enable

Minimum :

Maximum :

8. [Find/Replace]

Added support for quick search and bulk replacement of text labels.

Find/Replace

Find in :

Address Macro Index register Label

☒ Label ☐ Label tag library

Find What

Content : ☒ Match case

Replace With

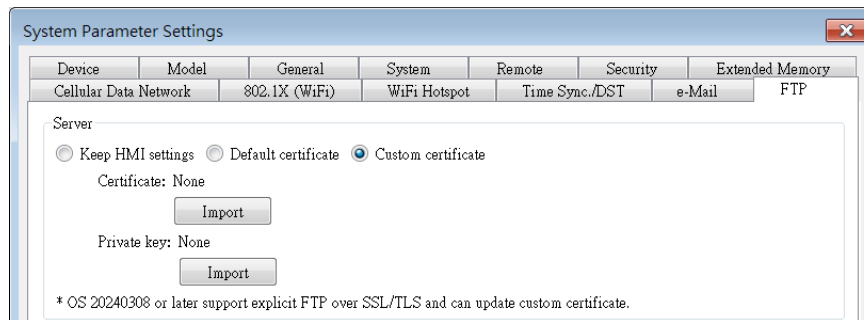
Content :

Location	Name	Type	Text
Window_10	BL_0	st...	1234

Double click on a selection to find the object.

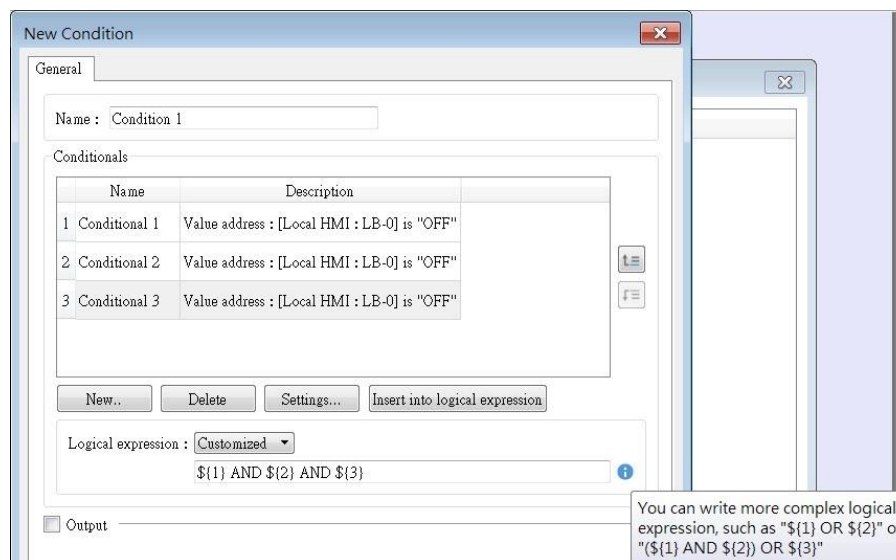
9. [FTP Server]

Added support for encrypted communication.



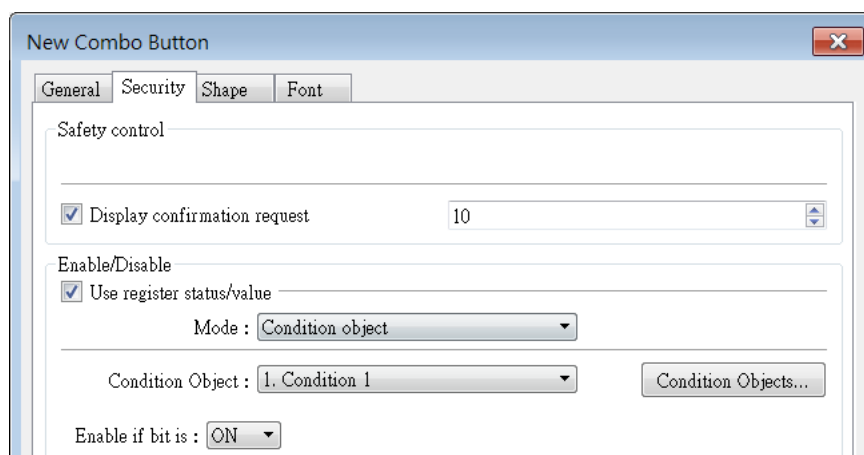
10. [Condition]

Added support for customized logical expressions, enabling the setting of more complex trigger conditions.



11. [Combo Button], [Direct Window], [Indirect Window], [Numeric], [ASCII]

Added support for using a Condition object as a trigger mode for security functions.



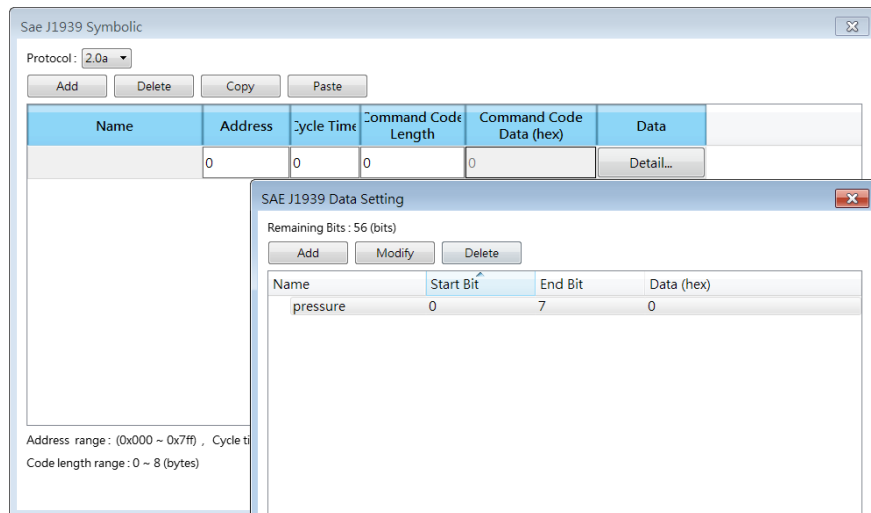
Communication and Drivers

1. [DELTA DVP 50MC Series (Modbus)(Ethernet)]

Added this driver.

2. [CAN Bus 2.0A/2.0B General and SAE J1939 symbolic]

Updated the Tag Manager interface.



3. [Control Technology 2500 Series (Ethernet)]

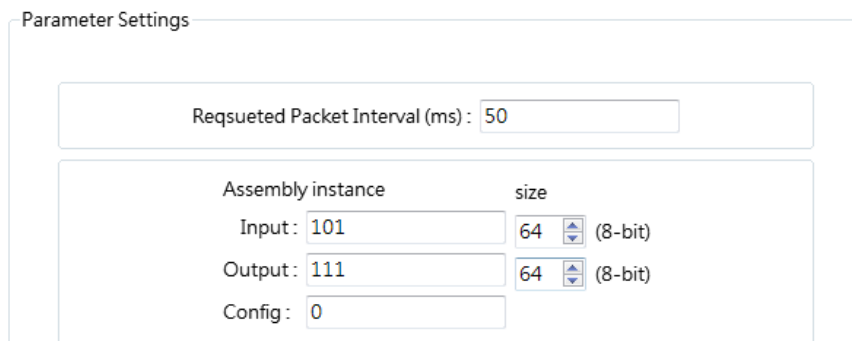
Added support for Alarm Addressing, Loop Addressing, Special Function Programs, Constant, and Drum data types.

4. [DELTA Ethernet/IP (AS Series)]

Optimized communication efficiency.

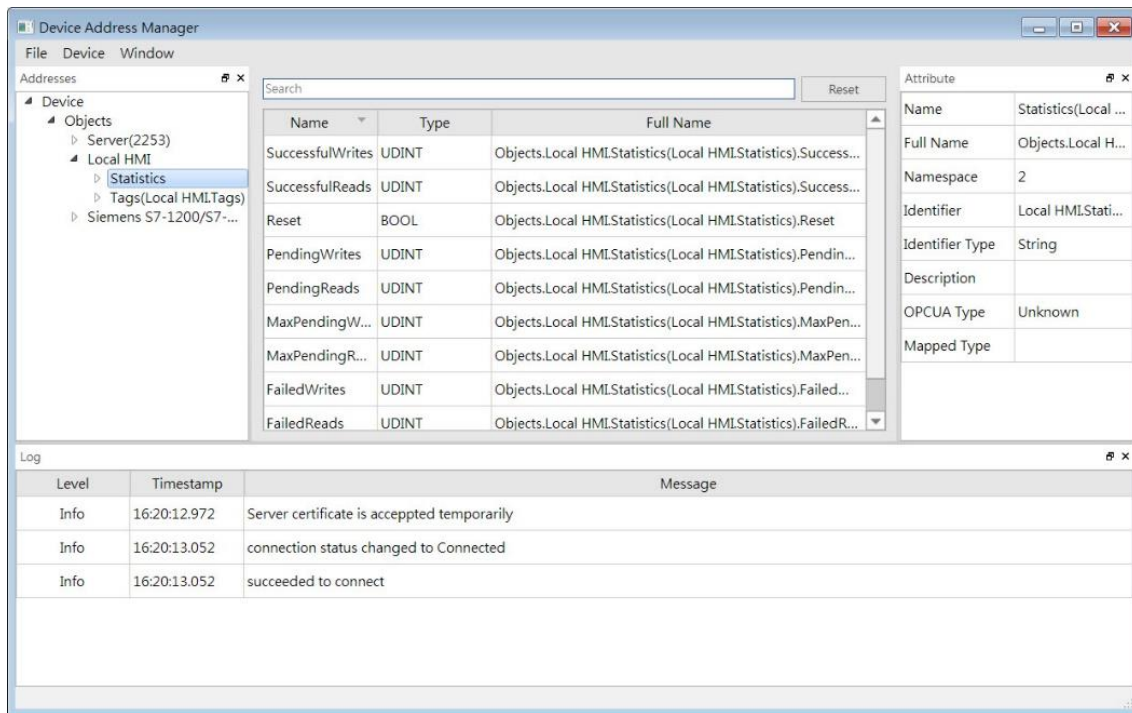
5. [ODVA General EtherNet/IP (Implicit Messaging)]

Added the Configuration setting.

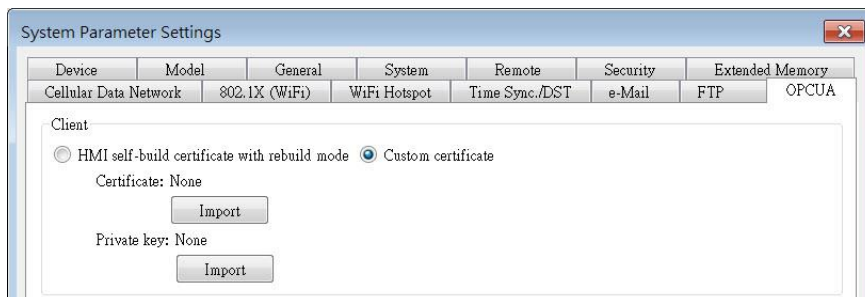


6. [OPC UA Client]

- a. Updated the Tag Manager interface.



- b. Added support for the import of custom certificates.



7. [Rockwell CompactLogix - Free Tag Names]

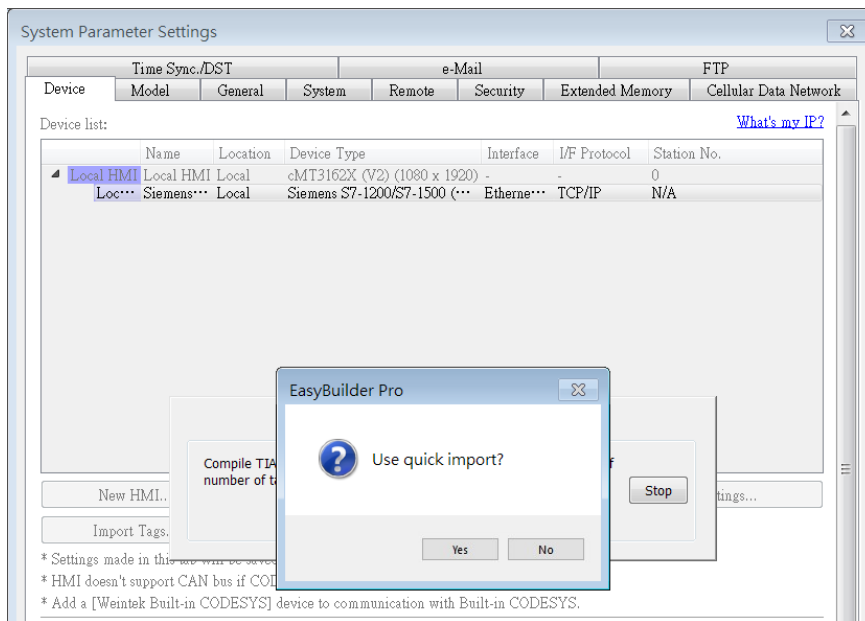
Optimized communication efficiency.

8. [Siemens S7-1200/S7-1500 (Absolute Addressing) (Ethernet)]

Added support for the import of S5Time data type.

9. [Siemens S7-1200/S7-1500 (S7CommPlus, Symbolic Addressing) (Ethernet)]

Added support for quick tag import.



10. [Beckhoff TwinCAT PLC - Free Tag Names (Ethernet)]

[Mitsubishi iQ-R Series - Binary Mode (Symbolic Addressing) (Ethernet)]

[OMRON EtherNet/IP (NJ/NX Series)]

Added support for reading array data that does not start from index 0.