

Software Version : EasyBuilder Pro V6.02.01.396

Supported Models

1. Added support for cMT-SVR-200.

Corrections

EasyBuilder Pro

1. Fixed a few compatibility issues that may occur when converting some earlier versions of project files.
2. Fixed an issue where certain sequence of operation steps may result in abnormal stop of EasyBuilder Pro software.
3. Fixed an issue where, after changing the connected device in project file, objects' addresses are not automatically mapped to the corresponding addresses with the same name.
4. Fixed an issue where CODESYS REAL format tag cannot be used by some objects.
5. Fixed issues relating to group operation and group libraries.
6. **[Event Log]** Fixed an issue where the background color may not be correctly displayed after import/export.

cMT Series

1. Fixed an issue where Bank Gothic Medium font is not correctly displayed.
2. **[ASCII]** Fixed an issue where keyboard pops up regardless of relevant settings.
3. Added support for system register LB-9017: disable write-back in PLC control's [change window].
4. Fixed an issue where "Turn" transition effect cannot be performed.

EasyConverter

1. Fixed an issue where event.db file cannot be opened.

Drivers

1. **[Azbil MODBUS RTU] [Azbil MODBUS TCP]** Added new drivers.
2. **[BACnet/IP]** Added support for COV ID whose length is three bytes for COV mechanism.

3. **[BACnet/ IP Server]** Added support for configuring communication port.
4. **[Cimon CM1-SC02A]** Expanded K, L address range.
5. **[GMTCNT PLC MODBUS TCP/IP]** Added new driver.
6. **[LS XBM/XBC/XGK CPU DIRECT]** Fixed an issue where values in S_Bit addresses are shown incorrectly.
7. **[MODBUS TCP/IP][MODBUS TCP/IP (Zero-based Addressing)]** Added 0x_8bits_write address.
8. **[ODVA EtherNet/IP (Explicit Messaging)]** Added support for Binary Access.
9. **[OMRON E5CN/E5EZ/E5ZN]** Added C0_Bit~C3_Bit addresses for accessing C0~C3 bits.
10. **[OMRON EtherNet/IP (NJ/NX Series)]** Fixed an issue where multi-dimensional arrays cannot be correctly read and fixed tag import issues.
11. **[OPC UA Client]** Fixed an issue where EasyBuilder Pro may not function properly when Display Name is empty.
12. **[Panasonic MINAS-BL KV series]** Added new driver.
13. **[S7-1200/S7-1500 (Absolute Addressing) (Ethernet)]** Fixed an issue where using multi-layered Function Block or Data Block in a TIA project may result in incorrect tag mapping after import.
14. **[Schneider SoMachine M Series (Ethernet)] [CODESYS V3 (Ethernet)]** Fixed an issue where considerably long arrays may not be successfully transferred using Data Transfer.
15. **[YASKAWA DX100/DX200/FS100/YRC1000 Robot Controller (Ethernet)]** Added support for accessing multiple devices and fixed an issue where the value in DX100 may sometimes be unstable.

Software Version : EasyBuilder Pro V6.02.01.274

Corrections

EasyBuilder Pro

1. Fixed an issue where playing video using a model without audio output may lead to memory leak.
2. **[MQTT]** Fixed an issue where resent messages are published twice by error.
3. Fixed issues related to the display of Address Grids and object addresses.
4. **[System Parameter Settings]** Fixed an issue where the device list may show incorrect items when the list contains Remote HMI or Remote PLC.
5. **[Numeric]** Fixed an issue where numeric display and calculation may generate incorrect result when using different addresses for read/write operations.
6. **[Timer]** Fixed an issue where server disconnect alarm shows and HMI can no longer be operated when ET value exceeds the upper limit of the address type used.

EasyConverter

1. Fixed an issue where the contents in “Category” column from event.db are read incorrectly.
2. Fixed an issue where millisecond information is incorrectly shown.

cMT Viewer

1. Fixed an issue where closing a window using multiple objects simultaneously might lead to system crash.

Drivers

1. **[Schneider SoMachine M Series]** Fixed an issue where String cannot be written.
2. **[Siemens S7-400 (Ethernet)]** Fixed an issue where DBBn cannot be read.
3. **[Siemens S7-1200 (Symbolic Addressing) (Ethernet)]** Fixed an issue where multi-dimensional arrays cannot be correctly read.
4. **[MODBUS Server]** Optimized command processing logic.
5. **[IDEC MicroSmart]** Added support for write operation for D_Bit.
6. **[OPC UA Client]** Added support for write operation with ASCII objects for Word Array.

7. **[Beckhoff ADS (Absolute Addressing)]** Added support for MD_FLOAT, ID_FLOAT, QD_FLOAT addresses.
8. **[ODVA General EtherNet/IP (Implicit Messaging)][Yaskawa MP2300Siec (Ethernet)]** Added support for input interface for RPI parameter.
9. **[SEUNGIL AHU]** Added support for station numbers 0~65535.
10. **[ABB EtherNet/IP (Implicit Messaging)]** Added support for EIP Adaptor mode.
11. **[OMRON CJ/CJ/CP]** Fixed issues relating to Pass Through.

Software Version: EasyBuilder Pro V6.02.01.209

Supported Models

1. Added support for cMT3071.
2. Added support for cMT-FHD.
3. Added support for MT8053iE.
4. Renamed cMT-HDMI to cMT-HDM.

New Features

EasyBuilder Pro

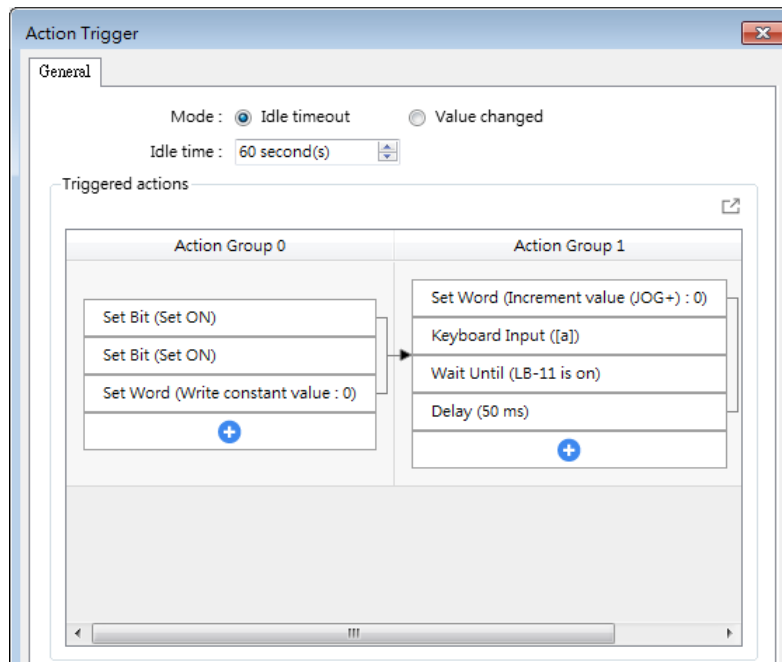
1. **[Address Tag Library]** Added support for tag search.
2. **[Email]** Added support for using Chinese characters in sender/recipient name.
3. (iP, iE Series) Added support for saving data to USB Disk 2.

Common Features

1. **[MQTT]** Added support for the following features:
 - a. Added "Use top-level key "d" for all addresses." option.
 - b. Added support for selecting TLS/SSL version.
2. **[Draw]** Added support for Security settings. (Relate objects: Line, Arbitrary Line, Link Line, Arc, Ellipse/Circle, Pie, Rectangle, Polygon, and Scale.)
3. **[Function Key]** Added Inc/Dec Function Keys for use with keyboard. These keys can increase/decrease a value by 1 when being used for numeric input.
4. **[Trend Display]** Added support for including Date information for time scale.

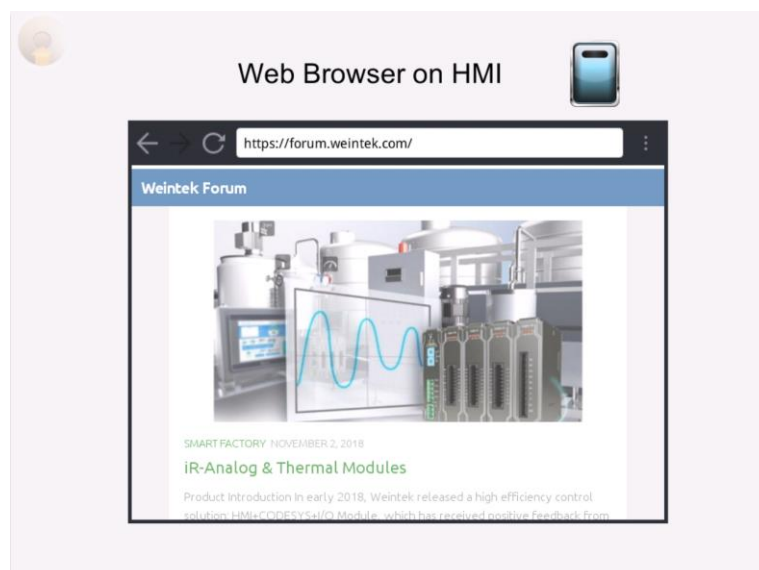
cMT Series

1. Added **[Action Trigger]** object. This is a global-scope object that can trigger a series of pre-defined actions after a pre-set idle time or when the value of the designated address meets the specified condition.



Action Trigger Object settings page

2. Added **[PLC Web Browser]** object. This object is a web browser intended for accessing PLC's web server for parameter configuration (The browser shows locally on HMI screen only; it does not show on cMT Viewer when connecting remotely.)



PLC Web Browser running on HMI screen

3. **[Trend Display]** Added support for the following features:
 - a. Added support for choosing font.
 - b. Added support for controlling channel visibility by setting bit state.
4. **[Combo Button]** Added support for the action group setting similar to [Action Trigger] object. As a result, the order to trigger actions can be configured.

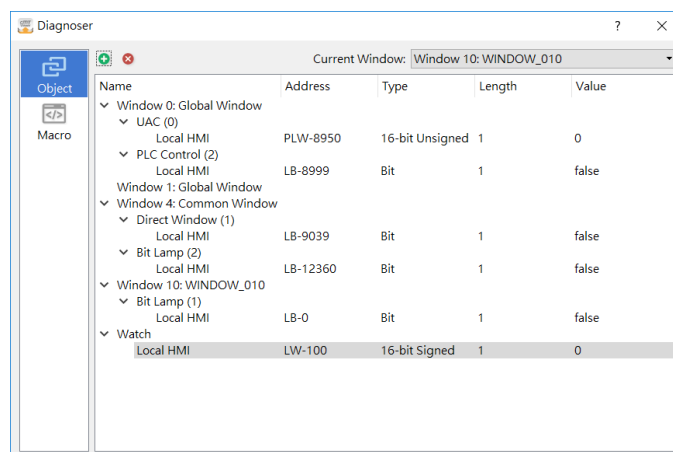
5. **[SQL Query Result Viewer]** Added support for automatically adjusting column width to fit the content.
6. **[Operation Log] [Database Server]** Added support for synchronizing Operation Log to the database.
7. **[MQTT]** Added support for Buffer settings under Sparkplug B mode.
8. (cMT3071/cMT3072/cMT3090/cMT3103/cMT3151) Added support for updating system setting using the description file (.conf) during project download.

cMT Gateway Series

1. (cMT-G03/G04) Added support for Modbus TCP/IP Server.

cMT Viewer

1. PC version has the following updates in this release:
 - a. Added support for fullscreen display.
 - b. Added support for manually loading a project file, which eliminates the time spent for uploading the file from HMI. The loaded project file must be identical to the one on HMI.
2. (Android) Added support for customized keyboard.
3. (Android and iOS) Added support for using vibration mode on mobile devices for event notification.
4. **[Alarm Bar] [Alarm Display]** Added support for dynamically changing the event category to be displayed.
5. Added support for Watch feature for Diagnoser. Watch addresses can be added in Diagnoser by clicking the + icon as shown below.



Screenshot of Diagnoser Watch Feature