

WEINTEK LABS., INC.

USB Key Auto Login

Demo Project

2012/10/3

Table of Content

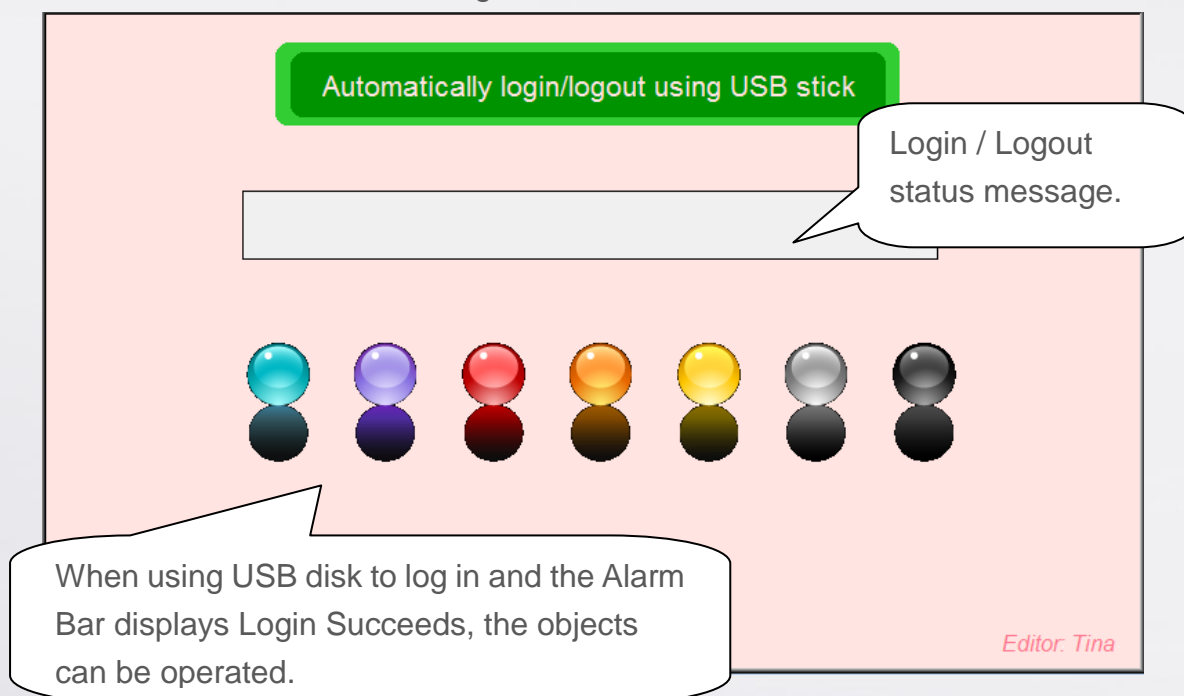
A. Overview 1

B. Setup 1

C. Notes 4

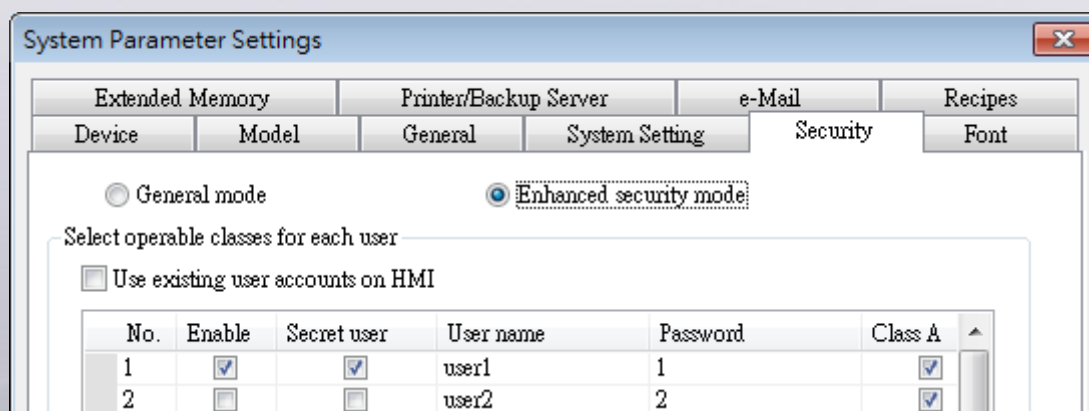
A. Overview

This function allows automatic login / logout without using a Function Key after saving the USB Security Key in USB disk. Insert the USB disk to HMI to log in, and remove the USB disk to log out.



B. Setup

1. System Parameter Settings » Security, select [Enhanced security mode].



- Set the account name and password.

No.	Enable	Secret user	User name	Password	Class A
1	<input checked="" type="checkbox"/>	<input checked="" type="checkbox"/>	user1	1	<input checked="" type="checkbox"/>
2	<input type="checkbox"/>	<input type="checkbox"/>	user2	2	<input checked="" type="checkbox"/>

- Select [Execute auto login/logout when insert an USB key into HMI] » [Enable].

Execute auto login/logout when insert an USB key into HMI

☒ Enable * Simulation not supports this function

Status address

PLC name: Local HMI Setting...

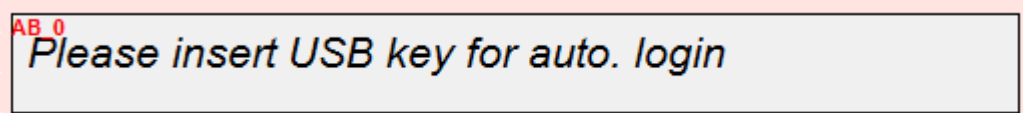
Address: LW 100 16-bit Unsigned

4. Designate a register to display the status of login / logout.

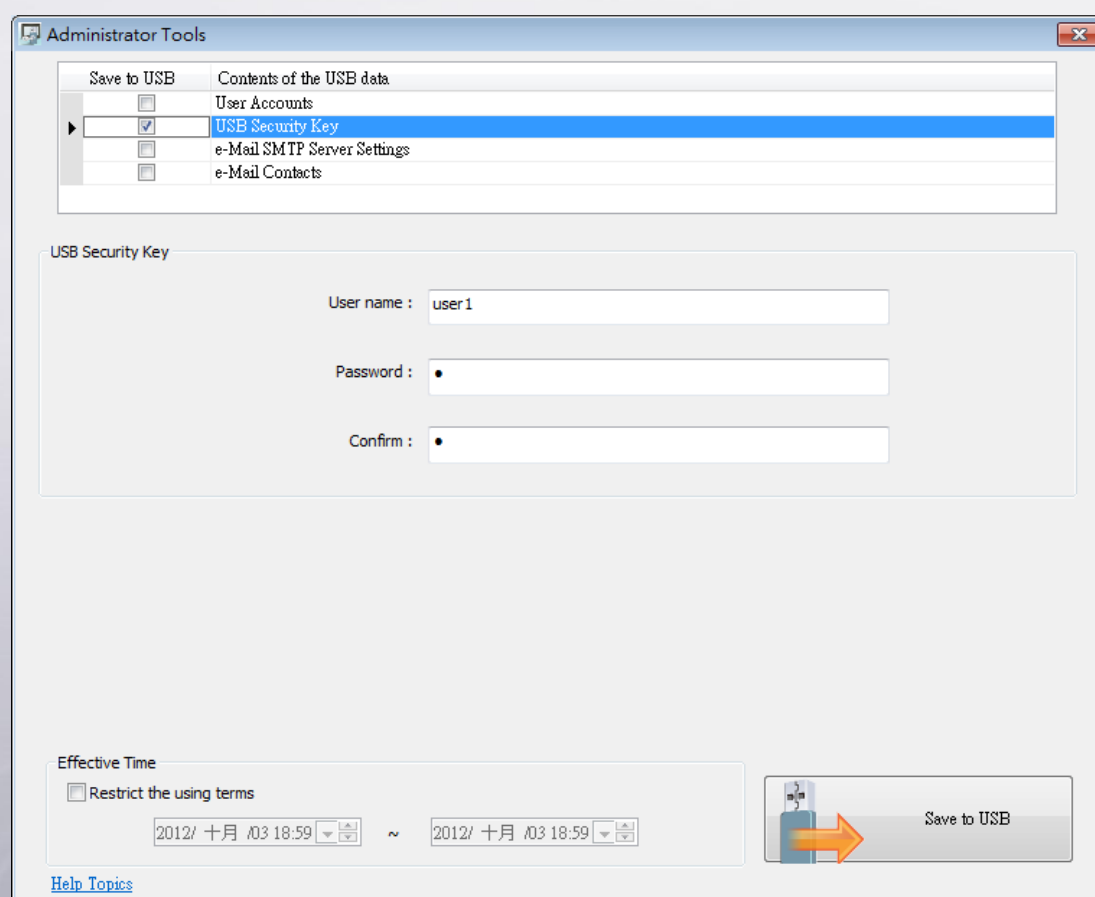
5. The result codes of login / logout:

Code	Result
(0x00)	No action
(0x01)	Login Succeeds
(0x04)	Login Fails
(0x08)	Logout Succeeds
(0x10)	Logout Fails

6. Create a Alarm Bar object to display the result.



7. Please refer to EasyBuilder Manual Chapter 10.3.2 to save the USB Security Key in USB disk.



8. Download project; insert the USB disk to HMI, when the Alarm Bar displays Login Succeeds, users are able to operate the objects.
9. To log out, remove the USB disk and the Alarm Bar displays Logout Succeeds.

C. Notes

1. When Auto Login is enabled, Function Key object is disabled to log in.
2. When Auto Login is enabled, it is still available to log in / out in [Enhanced Security Mode].
3. This function does not support On-line / Off-line simulation.
4. By default, only the USB Security Key saved in USB disk is valid.