

WEINTEK LABS., INC.

VNC Viewer

Demo Project

Contents

- 1. Overview and Operation 1
- 2. Setting up the Screen 2
- 3. Addresses 4

1. Overview and Operation

Overview

This demo project introduces how to use VNC Viewer. Now it is possible to view the screen of other HMIs or PC from an HMI.

Operation

Set the IP and password from the Numeric and ASCII objects below, and then press the START button on the right to start connection.

VNC Viewer



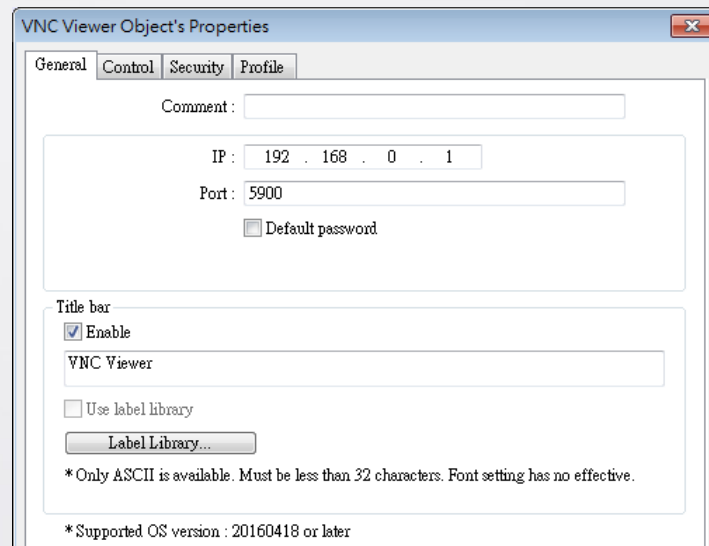
Status:

IP:

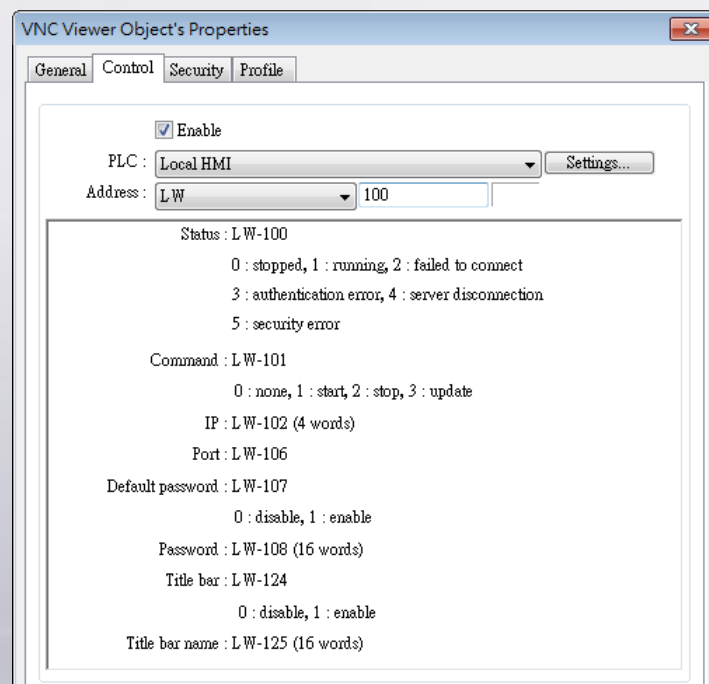
PW:

2. Setting up the Screen

Step 1. Create a VNC Viewer object in window no. 10, set [Title bar] as enable, and enter the title below.



Step 2. Set the [Control Address] as LW-100.



Step 3. Create a Numeric object. Use LW-100 to show the [Status].

Step 4. Create three Set Word objects. Use LW-101 as [Command] address.

The [Set Style] in the [Attribute] should be [Write constant value].

Each Set Word object's [Set Value] should be 1, 2, and 3.

Step 5. Create four Numeric objects with LW-102~LW-105 as the [IP].

Step 6. Create one ASCII object with LW-108 as the [Password]. Set the [Length] of word as 16.

3. Addresses

The addresses of key objects used in this demonstration are listed below.

Object	Address	Object ID	Description
Window 10			
VNC Viewer	LW-100	RA_0	Control address of VNC Viewer
Numeric	LW-100	ND_1	Status of VNC Viewer
Set Word	LW-101	SW_0, SW_1, SW_2	Commands for VNC Viewer
Numeric	LW-102~105	NE_1, NE_2, NE_3, NE_4	IP address of VNC Viewer
ASCII	LW-108	AE_0	Password of VNC Viewer