

WEINTEK LABS., INC.

# Recipe Database

User Management Using Recipe Database

Demo Project

**Contents**

- 1. Overview and Operation ..... 1
- 2. Setting up the Screen ..... 3
- 3. Addresses ..... 5

## 1. Overview and Operation

### Overview

EasyBuilder Enhanced Security allows a maximum of 127 users, but some big companies may have hundreds or thousands of employees. To efficiently manage the employees, different access privileges may be given to each employee.

This demo project introduces how to use Recipe Database and Macro to compare the employee's data when an employee tries to log in with an ID card.

Name	RFID	Title
David	A123456789	Manager
Jessica	B123456789	Engineer
William	C123456789	Engineer
Sophia	D123456789	Engineer
Noah	E123456789	Operator
Emma	F123456789	Operator
Lisa	G123456789	Operator

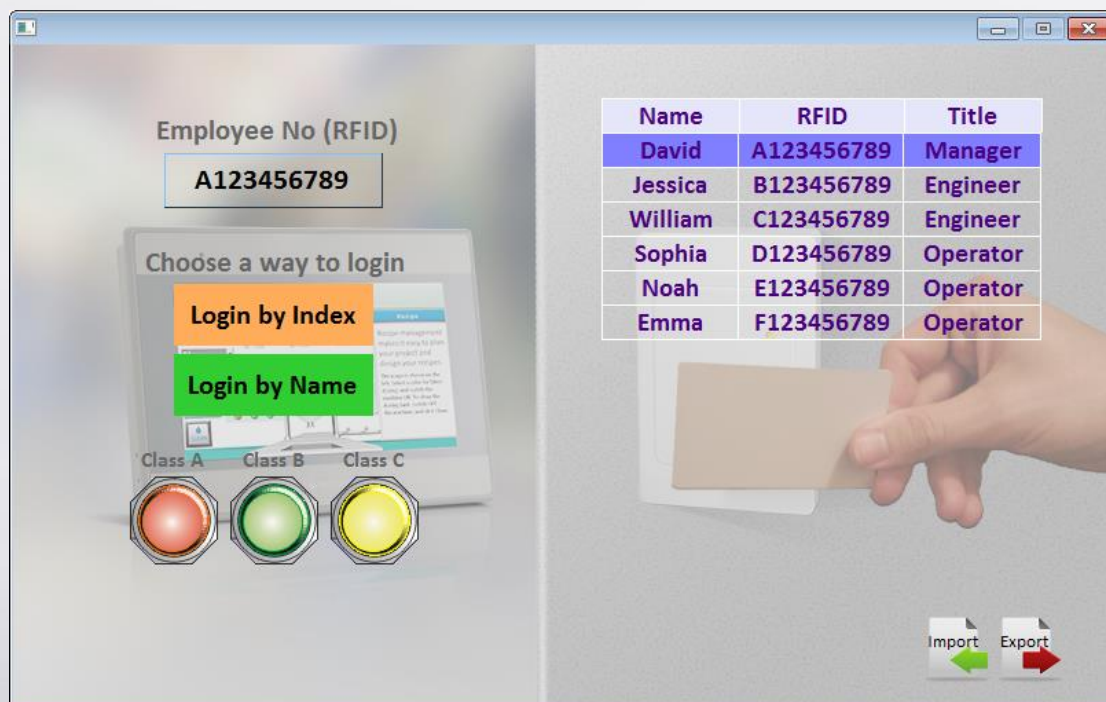
## Operation

When an employee swipes an ID card to log in, the macro will compare the number on the card with the data in Recipe Database to find a match. If the data exists in Recipe Database, the corresponding privilege will be compared with the settings in Enhanced Security Mode, and then finish login.

After swiping the card, the user can select [Login by Index] or [Login by Name].

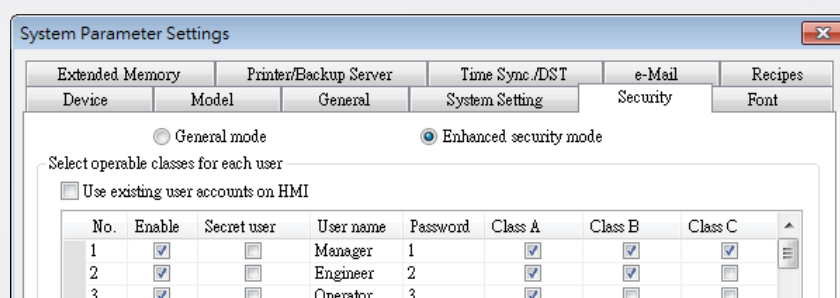
If login succeeded, the objects that the user can access are displayed. The

Import / Export buttons in the lower-right of the screen can import / export Recipe Database.

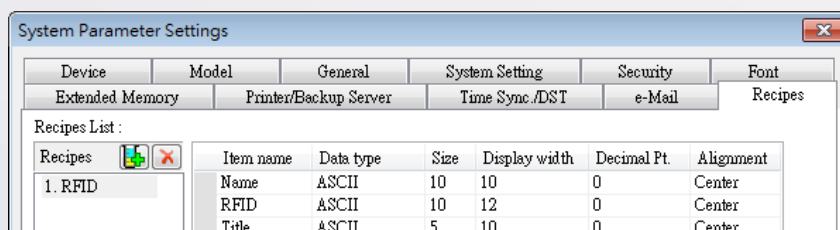


## 2. Setting up the Screen

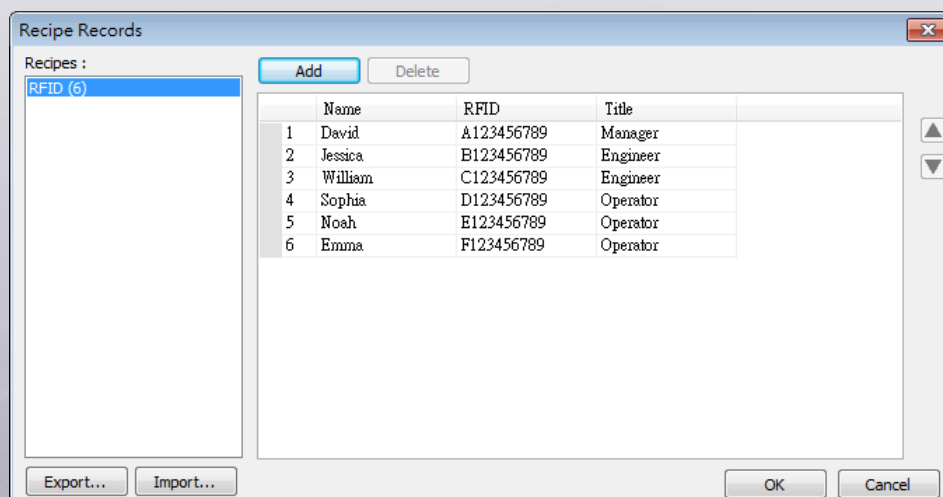
**Step 1.** In Enhanced Security Mode create different types of users with different privileges.



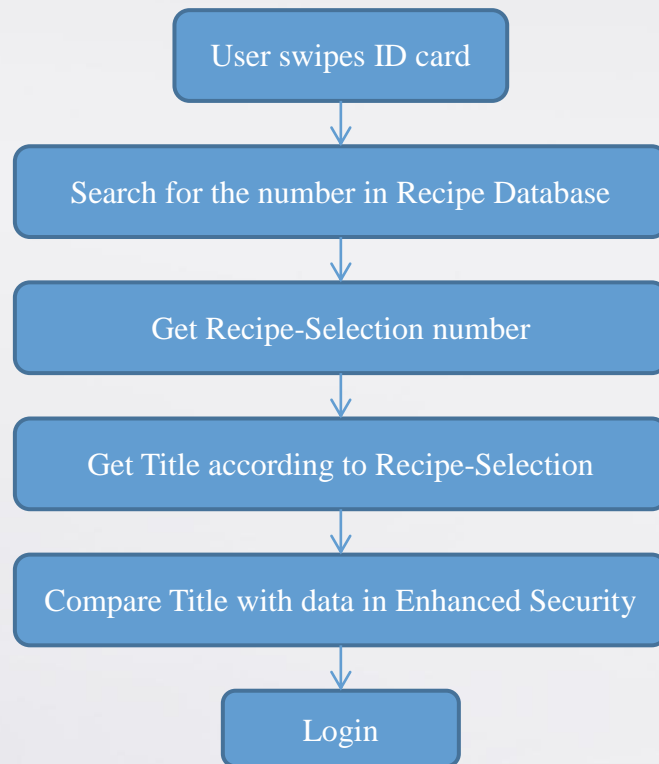
**Step 2.** In Recipes tab add a RFID recipe with items Name, RFID, and Title. The Title item is for entering the user name set in Enhanced Security Mode.



**Step 3.** In Recipe Records object settings dialog enter the employee data. The content in the Title column must be one of the user names set in Enhanced Security Mode.



**Step 4.** Use macro to compare the data on the ID card with the data in Recipe Database. The following flow chart shows the way macro works when RFID is used.



### 3. Addresses

The addresses of objects used in this demonstration are listed below.

Object	Address	Object ID	Description
<b>Window 10</b>			
ASCII	Barcode-1	AD_0	Displays employee ID
Combo Button	LB-0, LW-0	CB_0	Logout
Combo Button	LB-0, Macro ID:00	CB_1	Run macro, login by index
Combo Button	LB-0, Macro ID:01	CB_2	Run macro, login by name
Combo Button	LB-5, LB-6	CB_3	Opens/Closes Direct Window
Combo Button	LB-5, LB-6	CB_4	Opens/Closes Direct Window
Toggle Switch	LB-10	TS_0	Class A objects
Toggle Switch	LB-11	TS_1	Class B objects
Toggle Switch	LB-12	TS_2	Class C objects
<b>Window 11</b>			
File Browser	LW-20	FR_0	Displays files in USB drive.
Set Word	LW-100	SW_0	Import Recipe Database
<b>Window 12</b>			
ASCII	LW-20	AE_0	For entering file name
Set Word	LW-100	SW_1	Export Recipe Database