

WEINTEK LABS., INC.

Save Real-Time Date & Time into Recipe Database

Demo Project

Contents

1. Overview and Operation	1
2. Setting up the Screen	2
3. Addresses	4

1. Overview and Operation

Overview

This demo project shows how to save real-time date and time into Recipe Database in “yyyy/M/d_H:mm:ss” format.

Further application: On certain occasions, the user may need to find the data in Data Sampling, but Data Sampling does not support search function. In this case, the user can save sampled data into Recipe Database, and use the macro function of Recipe Database to search for the data. For further information regarding to Recipe Database, please see [EasyBuilder Pro User Manual](#) and [Recipe Database Manual](#).

Operation

Run off-line simulation, click [Save] button, and a new time record will be added into Recipe Database.

Save current time into Recipe Database

Year	Month	Day	Hour	Minute	Second	Time (yyyy/M/d_H:mm:ss)
2016	6	4	11	34	23	2016/06/04_11:34:23
2016	6	4	11	34	25	2016/06/04_11:34:25
2016	6	4	11	34	26	2016/06/04_11:34:26
2016	6	4	11	34	28	2016/06/04_11:34:28
2016	6	4	11	34	29	2016/06/04_11:34:29
2016	6	4	11	34	31	2016/06/04_11:34:31
2016	6	4	11	34	34	2016/06/04_11:34:34
2016	6	4	11	34	36	2016/06/04_11:34:36
2016	6	4	11	34	57	2016/06/04_11:34:57

Current Time

Year

2016

Month

6

Day

4

Hour

11

Minute

35

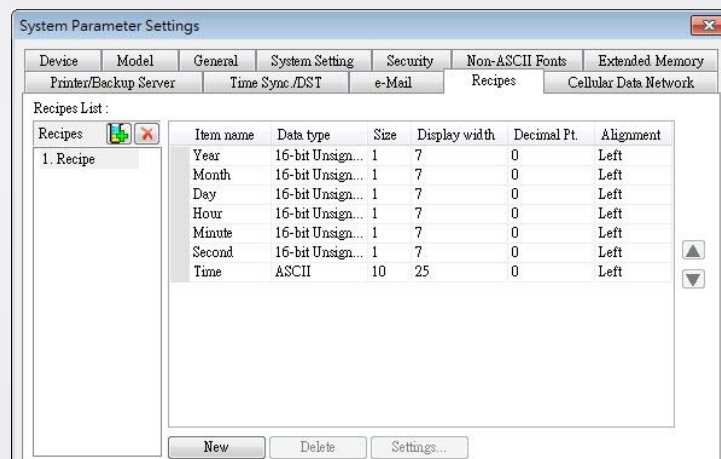
Second

57

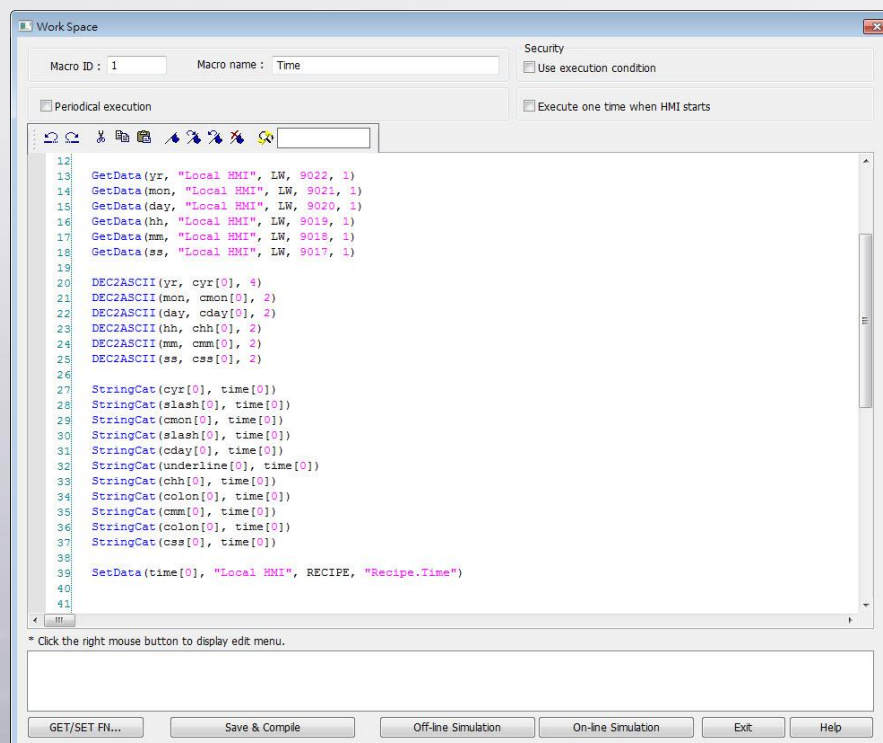
SAVE

2. Setting up the Screen

Step 1. In EasyBuilder open [System Parameter Settings] » [Recipes] and build the recipe.

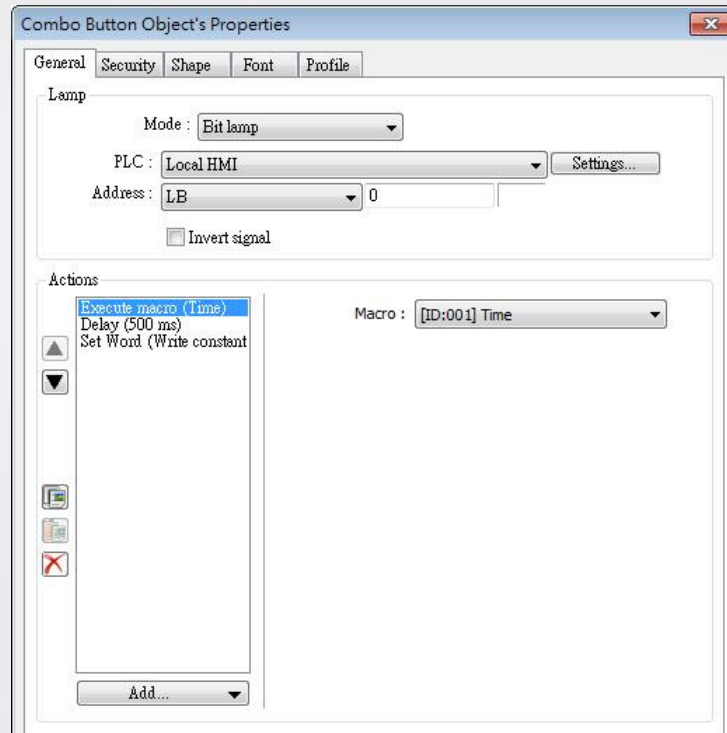


Step 2. Open Macro Editor, use GetData function to get RTC time, use DEC2ASCII to change the time data into strings, and then use StringCat to concatenate the strings.



Step 3. Create a Combo Button. The actions done after clicking this button

will be: Trigger the macro that changes the time data into a string, and then execute recipe-command to save the string into Recipe Database.



3. Addresses

The addresses of key objects used in this demonstration are listed below.

Object	Address	Object ID	Description
Window 10			
Recipe View		RV_0	Shows Recipe data.
Numeric	LW-9022	NE_0	Shows current year.
Numeric	LW-9021	NE_1	Shows current month.
Numeric	LW-9020	NE_2	Shows current day.
Numeric	LW-9019	NE_3	Shows current hour.
Numeric	LW-9018	NE_4	Shows current minute.
Numeric	LW-9017	NE_5	Shows current second.
Combo Button	Macro:1, RECIPE-Command	CB_0	Triggers macro and save time data into Recipe Database.