

Macro Recipe

Table of Contents

1. Overview and Operation	2
2. Setting up the Screen	5
3. Addresses.....	7

1. Overview and Operation

Overview

EasyBuilder Pro enhanced the function of using and editing Recipes. Users can define the needed data type in system parameter settings then use Recipe Records Object to set the values and view the edited recipe data via Recipe View Object. The edited recipe can be operated or adjusted using Macro or the designated register. This demo project demonstrates the new functions of recipe operating and setting.

EasyBuilder Pro _ New Recipe Function

English ▾

Employee Table

Name	On_Board	Department	Ext
Jeff	2006/10/07	Sales	102
David	2000/09/25	Export	126
Deitel	2008/10/01	Import	106
Dave	2010/05/02	Purchasing	123
Gamma	2002/08/01	Human Resource	125
Johnson	2002/10/12	Sales	120

Record no. 0 Counter 18

New
Update
Delete

Name

Jeff

On Board Date

2006/10/07

Department

Sales

Ext.

102

Age

35

Search by name

Standley

First
Next

Strict Search

Find the employees taking office after ...

2010 ▾

/

01 ▾

/

01 ▾

First
Next

Editor: Nina

Operation

Several parts can be seen in this demo project:

1. On Recipe View Object, a table can be seen: Employee Table. Directly click on a record to be checked, and use the slider bar to check the whole table.

Name	On_Board	Department	Ext
Jeff	2006/10/07	Sales	102
David	2000/09/25	Export	126
Deitel	2008/10/01	Import	106
Dave	2010/05/02	Purchasing	123
Gamma	2002/08/01	Human Resource	125
Johnson	2002/10/12	Sales	120

Record no. 0 Counter 18

2. To add, delete or modify data in Recipe View Object, the three buttons can be used: [New], [Update], and [Delete].



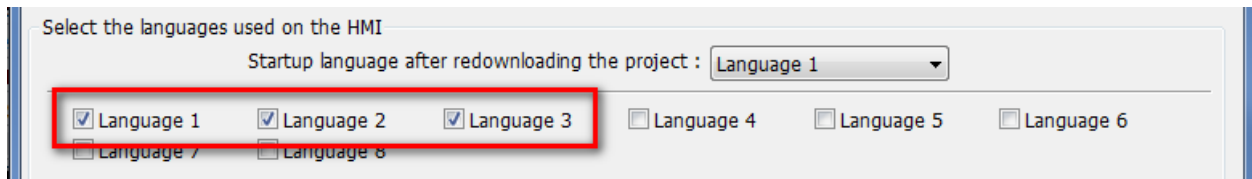
3. When a record in the table is selected, use ASCII Input / Numeric Input Objects to display the data of this record. To modify data in Recipe View Object, enter the data in these fields, and then click [Update].

Name	
Jeff	
On Board Date	
2006/10/07	
Department	
Sales	
Ext.	Age
102	35

4. Users can directly enter the name to be checked in the [Search by name] field. There are two ways to search: general or strict. For general, input the first letter allows searching, for Strict Search, the complete name must be input. Users can also specify the date to [Find the employees taking office after.....].

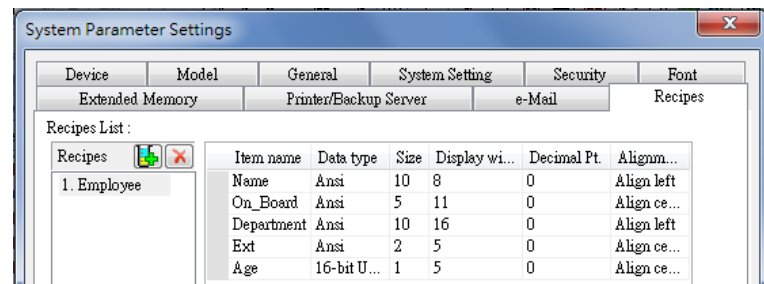
Search by name	Standley	First	Next
Strict Search			
Find the employees taking office after ...			
2010	/	01	/ 01
First		Next	


5. To change the display language, tick Languages 1~3 when compiling.



2. Setting up the Screen

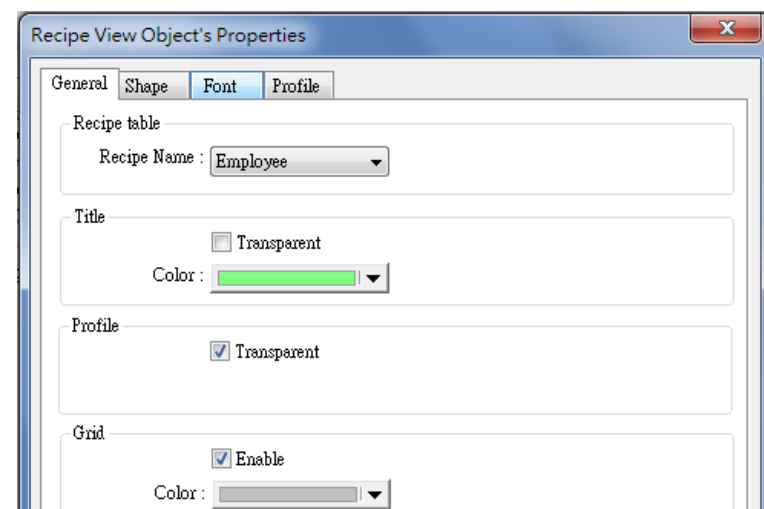
1. Go to System Parameter Settings -> Recipes to define data type, and set the items: Name, On-Board, Department, Ext, Age. For detail please refer to EasyBuilder Pro User Manual Chapter 5 System Parameter Settings.



2. After creating recipe, click  Recipe Records for relevant settings. For detail please refer to EasyBuilder Pro User Manual Chapter 24 Recipe Editor.

	Name	On_Board	Department	Ext
1	Jeff	2006/10/07	Sales	102
2	David	2000/09/25	Export	126
3	Deitel	2008/10/01	Import	106
4	Dave	2010/05/02	Purchasing	123
5	Gamma	2002/08/01	Human Resource	125
6	Johnson	2002/10/12	Sales	120
7	Helm	2002/05/17	Service	103
8	Ylissides	2002/05/04	Marketing	121
9	Martin	2011/02/05	Research	101
10	Ken	2008/09/19	Research	124
11	John	2007/09/15	Marketing	111
12	William	2010/02/24	Research	127
13	Robert	2000/06/04	Human Resource	109
14	Standley	2008/12/16	Marketing	110

3. After setting use Recipe View Object to display recipe data.



4. Upon completion of the settings, a new Recipe View Object is created.

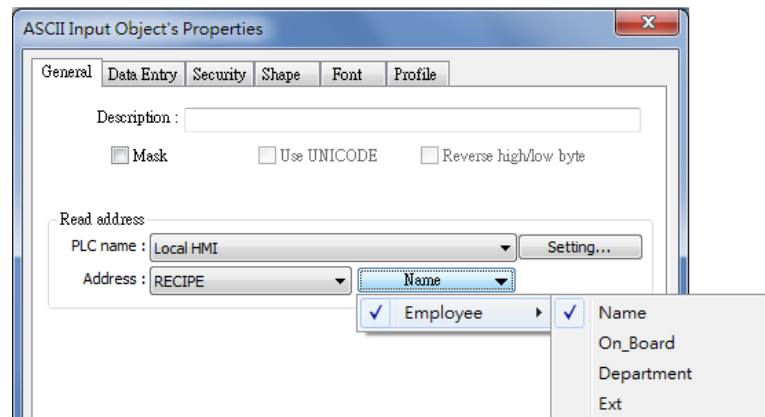
RV_0	Name	On_Board	Department	Ext
	Jeff	2006/10/07	Sales	102
	David	2000/09/25	Export	126
	Deitel	2008/10/01	Import	106
	Dave	2010/05/02	Purchasing	123
	Gamma	2002/08/01	Human Resource	125
	Johnson	2002/10/12	Sales	120

5. Create three Set Word Objects to write a specific value to Recipe -> Command to update or modify data. Command settings:

- Command 1: Add a new Recipe Record to the last row.
- Command 2: Update the selected Recipe Record.
- Command 3: Delete the selected Recipe Record.



6. Create 5 ASCII Input Objects for displaying data. The item to be displayed can be selected in [Address] settings.



7. Users can directly enter the name to be checked in the [Search by name] field, or specify the date to [Find the employees taking office after.....]. This can be set using Macro. For detail please refer to EasyBuilder Pro User Manual Chapter 18 Macro Reference.



3. Addresses

The object addresses used in this demo project are listed below, the addresses and object ID can be modified based on actual usage.

Object	Address	Object ID	Description
Window 4			
Set Word	LW-120	SW_0	Set when window open: Year=2010
	LW-121	SW_1	Set when window open: Month=1
	LW-122	SW_2	Set when window open: Day=1
Window 10			
Recipe View		RV_0	View the data of the specified recipe.
Set Word	RECIPE_Command	SW_0	Write Command 1
	RECIPE_Command	SW_1	Write Command 2
	RECIPE_Command	SW_2	Write Command 3
Numeric Display	RECIPE_Selection	ND_0	The current selection of record, numbered from zero.
	RECIPE_Count	ND_1	The number of records in current Recipe.
ASCII Input	RECIPE_Name	AE_0	Display Item: Name
	RECIPE_On-Board	AE_1	Display Item: On Board
	RECIPE_Department	AE_2	Display Item: Department
	RECIPE_Ext	AE_3	Display Item: Ext
	LW-100	AE_4	Enter the name to search.
Option List	LW-9134	OL_0	Language Mode
	LW-120	OL_1	Year
	LW-121	OL_2	Month
	LW-122	OL_3	Day
Function Key		FK_0	Execute Macro [ID:000]
		FK_1	Execute Macro [ID:001]
		FK_2	Execute Macro [ID:002]
		FK_3	Execute Macro [ID:003]
		FK_5	Execute Macro [ID:005]