

Folder Name of Backup

Table of Contents

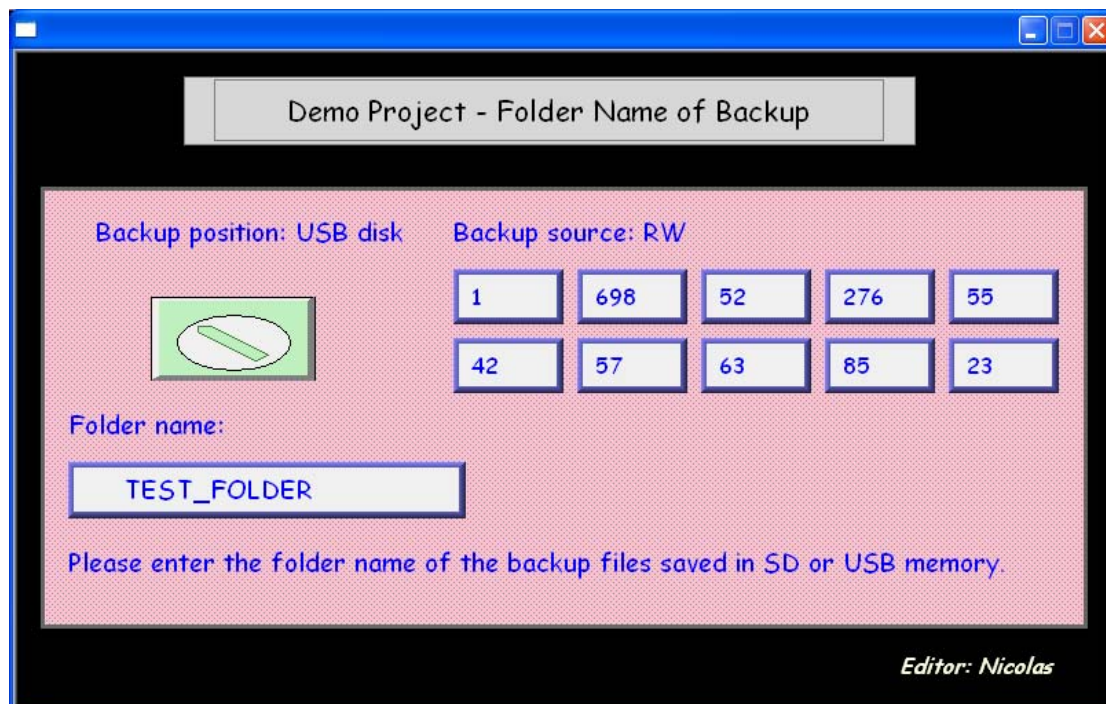
1. Overview and Operation.....	3
2. Setting up the Screen	5
3. Addresses.....	7

1. Overview and Operation

Overview

This demo project demonstrates how to use system register [LW-9032: folder name of backup history files to SD, USB memory] and Backup object to set user-defined folder names when back up files for easier reference and management.

Data source of backup files can be: RW, RW_A, historical event log, or historical data sampling. This demo project focuses on RW, and saves the backup files to USB disk.



Operation

Enter any data in RW first.

Demo Project - Folder Name of Backup

Backup position: USB disk Backup source: RW

Folder name:

Please enter the folder name of the backup files saved in SD or USB memory.

Editor: Nicolas



In the [Folder name] field specify the folder name, and then press the backup button. Later when open files in USB on PC, the set folder name can be found.

Demo Project - Folder Name of Backup

Backup position: USB disk Backup source: RW

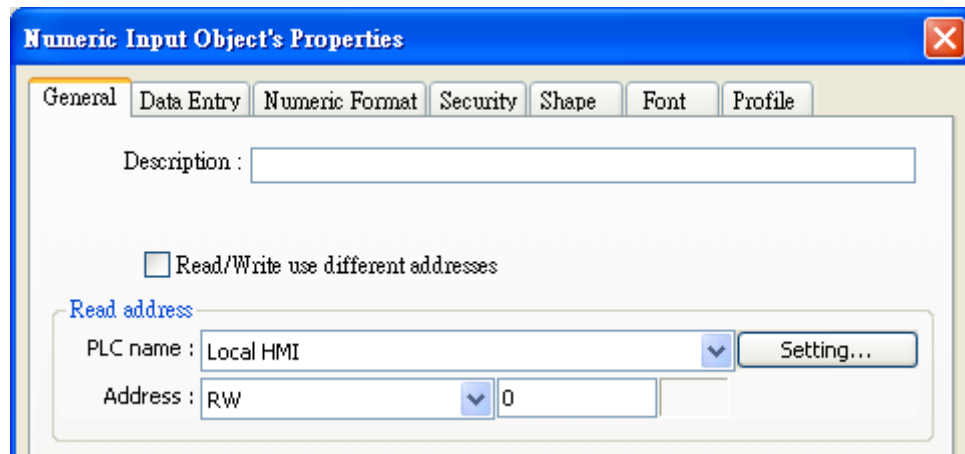
Folder name: TEST_FOLDER

Please enter the folder name of the backup files saved in SD or USB memory.

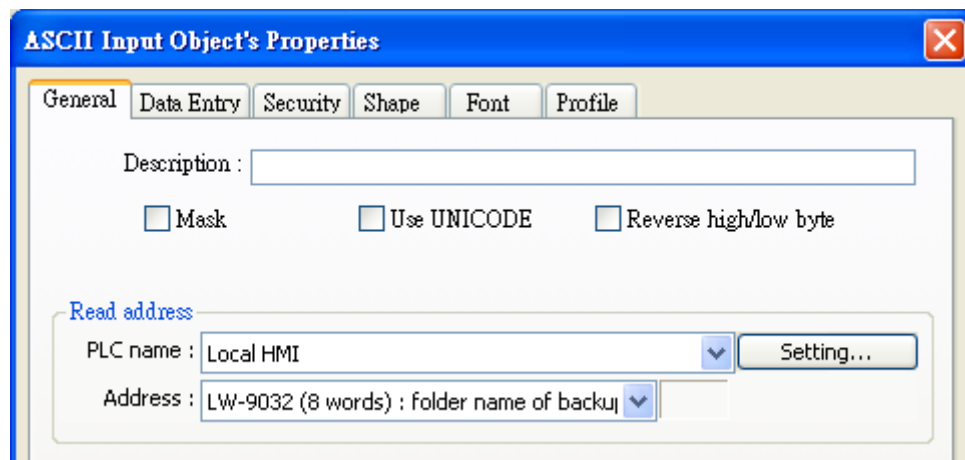
Editor: Nicolas

2. Setting up the Screen

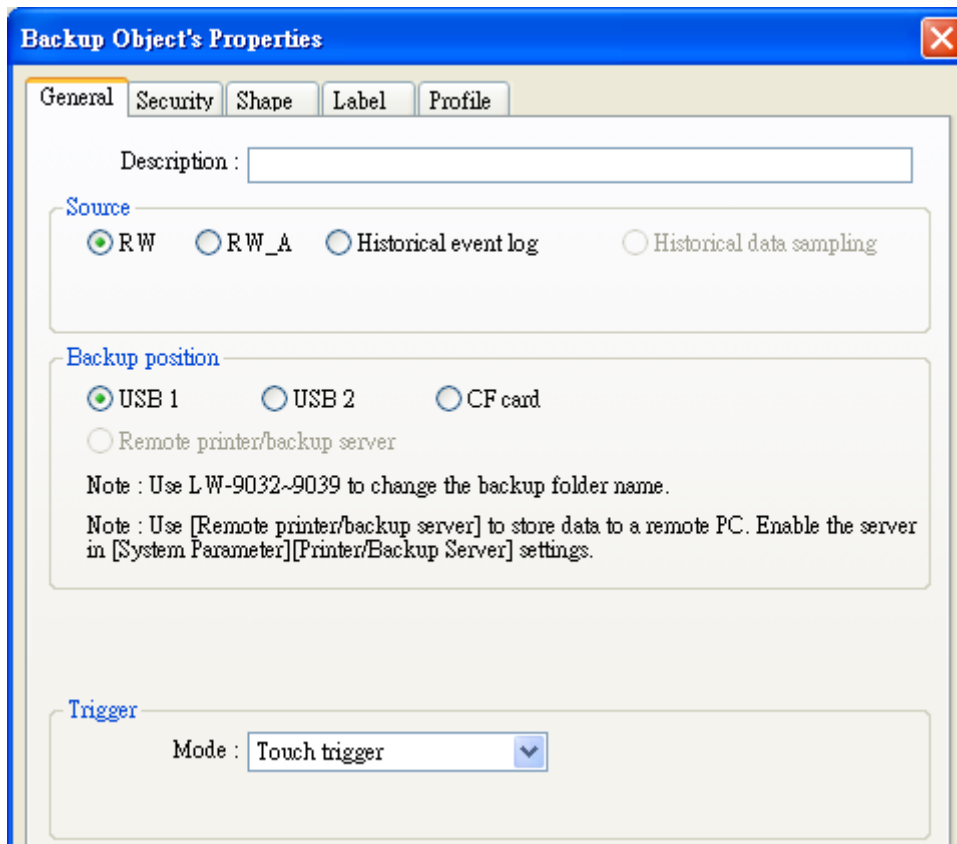
1. Create several Numeric Input objects that are set to different RW addresses for recording RW values in window no. 10.



2. Create an ASCII Input object in window no. 10, set [Read address] to LW-9032, [No. of word] to 8, for specifying backup folder name.



3. Create a Backup object in window no. 10, and configure the relevant settings.



Backup Object's Properties

General Security Shape Label Profile

Description :

Source

☒ RW ☐ RW_A ☐ Historical event log ☐ Historical data sampling

Backup position

☒ USB 1 ☐ USB 2 ☐ CF card ☐ Remote printer/backup server

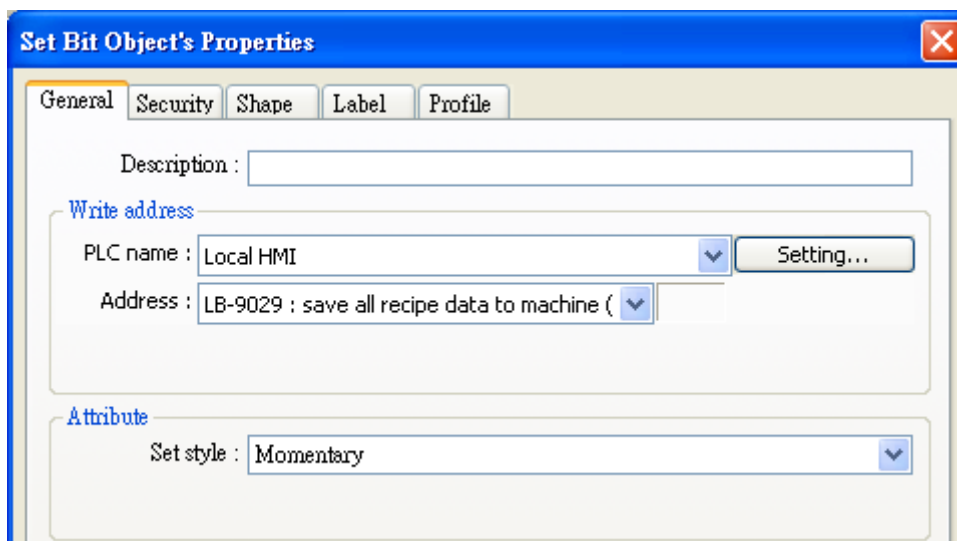
Note : Use L W-9032~9039 to change the backup folder name.

Note : Use [Remote printer/backup server] to store data to a remote PC. Enable the server in [System Parameter][Printer/Backup Server] settings.

Trigger

Mode :

4. Create a Set Bit object in window no. 10, set [Write address] to LB-9029 to trigger save RW data. (Otherwise RW data is automatically saved every minute.)



Set Bit Object's Properties

General Security Shape Label Profile

Description :

Write address

PLC name :

Address :

Attribute

Set style :

3. Addresses

The addresses of objects used in this demonstration are listed below.

Object	Address	Object ID	Description
Window 10			
Numeric Input	RW_0 ~ RW_9	NE_0 ~ NE_9	Record RW data
ASCII Input	LW-9032	AE_0	User-defined backup folder name
Set Bit	LB-9029	SB_0	Trigger save RW
Backup		BU_0	Trigger data backup