

Demo Project for Option List

Table of Contents

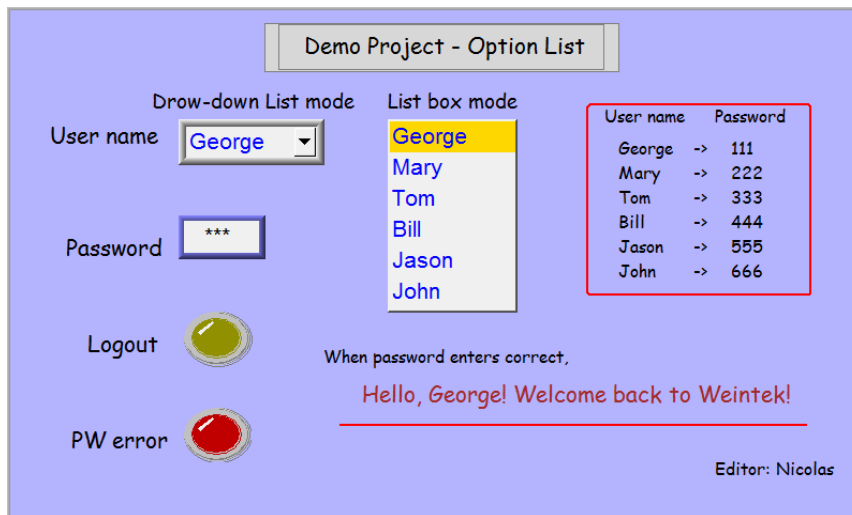
1. Overview and Operation
2. Setting Up the Screen
3. Addresses

1. Overview and Operation

Overview

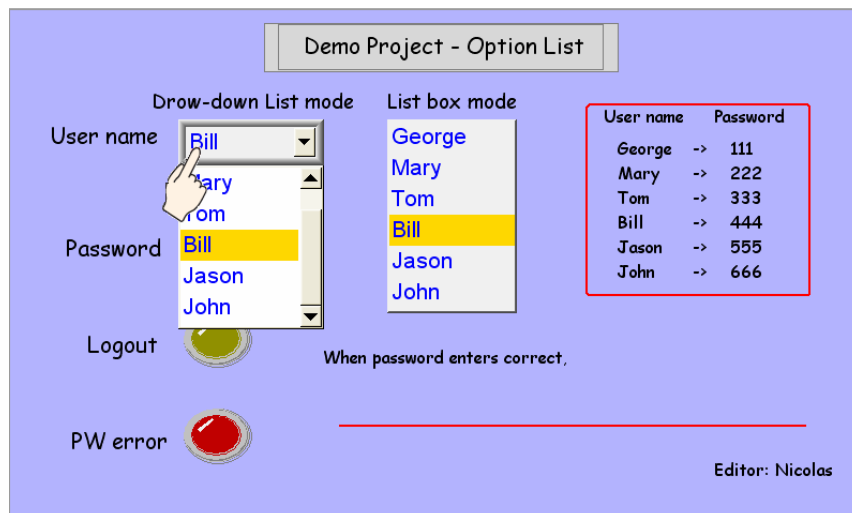
An Option List displays a list of items that users can view and select. Once users select an item, the value corresponding to the item will be written to a word register. There are two forms of this object – List box and Drop-down list. The list box lists all items and highlights the selected one. However, the drop-down list normally displays only the selected item. Once users touch it, the system will display a list box (which is similar to the one with List box style) beneath the object.

This demo project introduces the usage of Option List object with system tag LW9219_user no. function.



Operation

Users can select user name through drop-down list or list box mode.





Input required password on numeric input object.

Demo Project - Option List

Draw-down List mode List box mode

User name: Bill

Password: ***

Logout

PW error

When password enters correct,

MAX: 9999 MIN: 0

444

User name	Password
George	-> 111
Mary	-> 222
Tom	-> 333
Bill	-> 444
Jason	-> 555
John	-> 666



When password entered correctly, the protected object will be displayed.

Demo Project - Option List

Draw-down List mode List box mode

User name: Bill

Password: ***

Logout

PW error

When password enters correct,

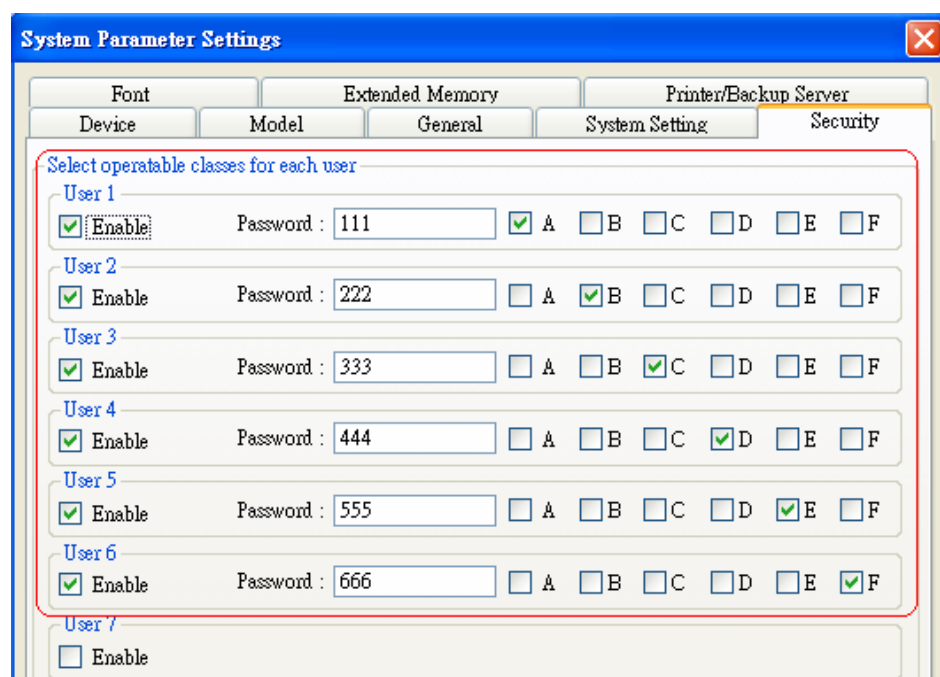
Hello, Bill! Welcome back to Weintek!

Editor: Nicolas

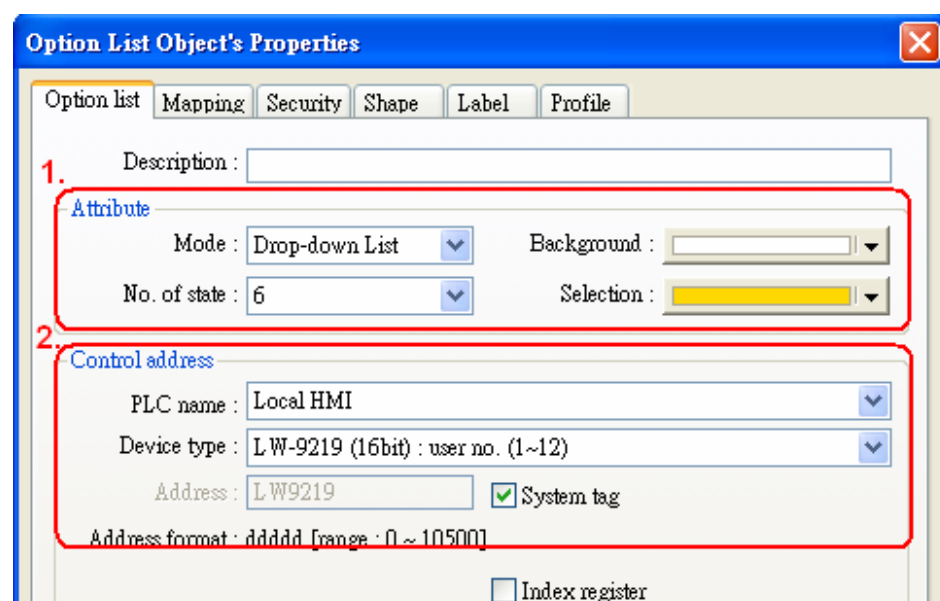
User name	Password
George	-> 111
Mary	-> 222
Tom	-> 333
Bill	-> 444
Jason	-> 555
John	-> 666

2. Setting Up the Screen

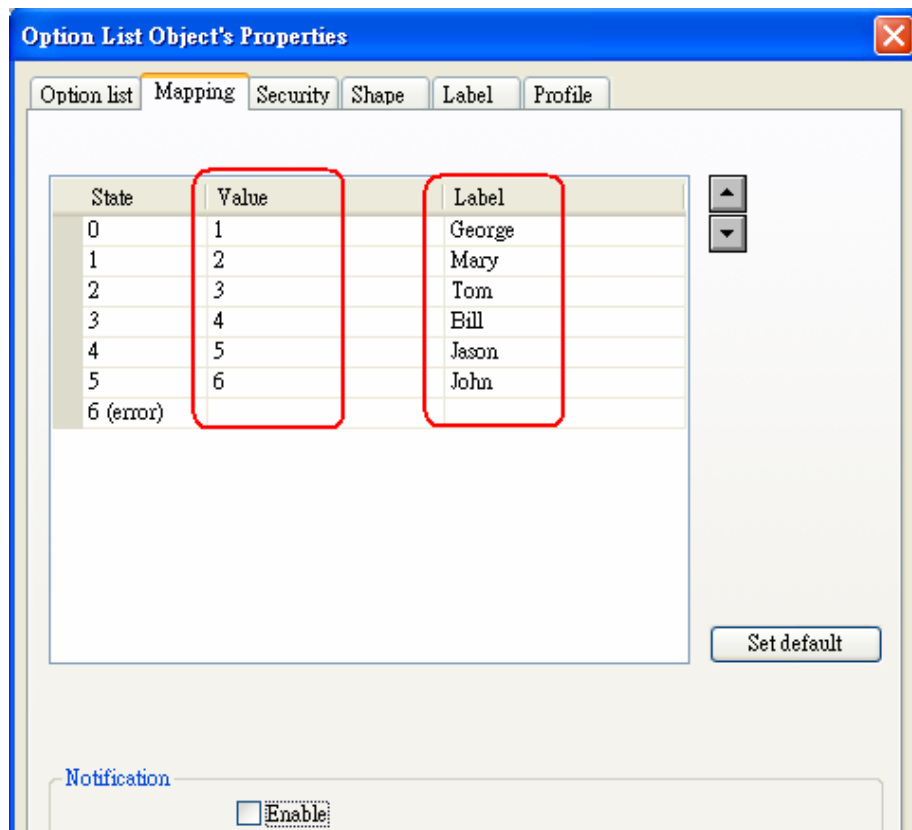
1. First of all, users have to select operable classes for each user, and set required password.



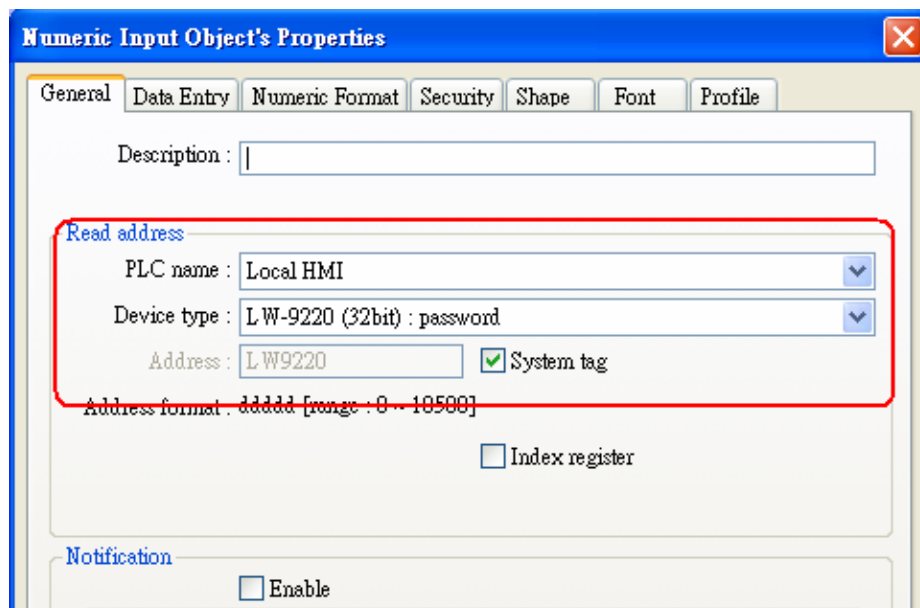
2. Click Option list object and select List box or Drop-down list mode, and set No. of state to 6 (there are six users in this demo), and set control address to LW9219_user no..



3. On Option list / Mapping tab, set value (1~6) and label (user name) for each state. The label will map to LW9219_ user no. (1~6). For example, option list object displays user1 as George and user2 as Mary...etc.



4. Set a numeric input object as password input tool (LW9220_password).



5. Set a set bit object for users to logout (LB9050_user logout).

Set Bit Object's Properties

General Security Shape Label Profile

Description :

PLC name : Local HMI

Write address

Device type : LB-9050 : user logout

Address : LB9050 ☒ System tag

Address format : ddddd [range : 0 ~ 11999]

☐ Index register

☐ Write after button is released

Attribute

Set style : Set ON

6. Set a bit lamp object for indicating when password error occurs.

Bit Lamp Object's Properties

General Security Shape Label Profile

Description :

Read address

PLC name : Local HMI

Device type : LB-9060 : password error

Address : LB9060 ☒ System tag

Address format : ddddd [range : 0 ~ 11999]

☐ Index register

☐ Invert signal

7. Create six set bit objects, and each object appointed to unique object class, and then select "Make invisible while protected". In this demo, we set LB0 to class A, LB1 to class B...etc.

Set Bit Object's Properties

General Security Shape Label Profile

Safety control

Min. press time (sec) : 0

☐ Display confirmation request

Max. waiting time (sec) : 10

Interlock

☐ Use interlock function

LB0 => class A
LB1 => class B
LB2 => class C
LB3 => class D
LB4 => class E
LB5 => class F

User restriction

Object class : Class A

☐ Disable protection permanently after initial activation

☐ Display warning message if access denied

☒ Make invisible while protected

3. Addresses

The addresses used in this demo project are listed below. Please change these addresses according to your system.

Object	Address	Object ID	Detail
Window10			
Option list	LW9219	OL_0	User no. / drop-down list mode
	LW9219	OL_1	User no. / list box mode
Numeric input	LW9220	NE_0	Password
Set bit	LB0	SB_0	Class A
	LB1	SB_2	Class B
	LB2	SB_3	Class C
	LB3	SB_4	Class D
	LB4	SB_5	Class E
	LB5	SB_6	Class F
	LB9050	SB_1	User logout
Bit lamp	LB9060	BL_0	Password error