

Change Window with Option List

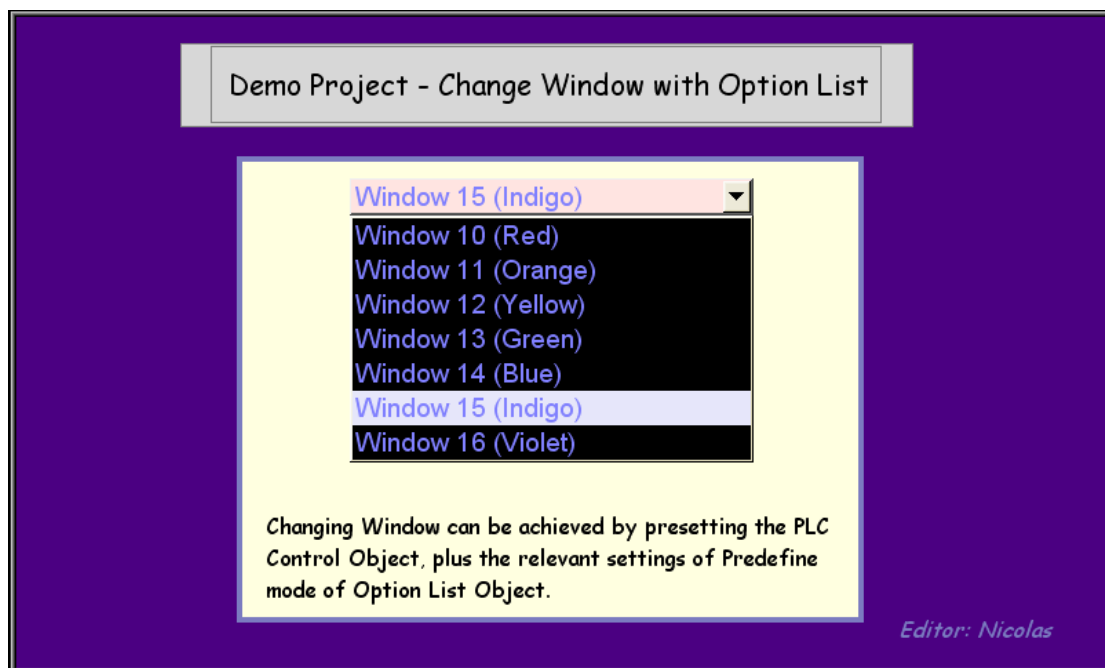
Table of Contents

1. Overview and Operation	3
2. Setting up the Screen	4
3. Addresses	6

1. Overview and Operation

Overview

Are you still creating Function Keys one by one only for changing windows? Now with PLC Control Object and Option List Predefine Mode, not only that changing windows is easier to operate, the number of objects on your window can be reduced for a clearer view.

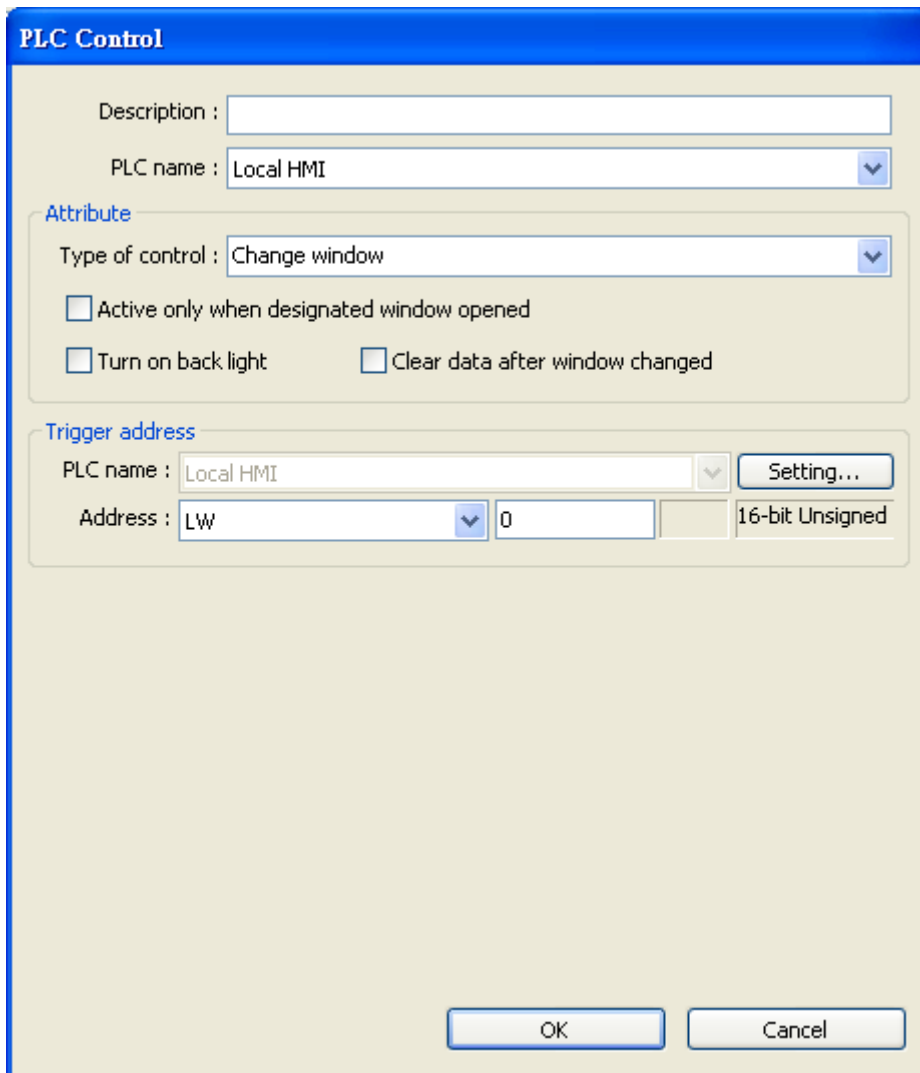


Operation

Click on **[Option List]** object icon, set the **[Attribute]** and check from **[Mapping]** tab to set which window number is mapped and the window name shown on Option List. It is recommended to place this object on Common Window (no. 4).

2. Setting up the Screen

1. Firstly, create a PLC Control Object set with **[Change window]** function, and set “LW-0” as **[Trigger address]**.



PLC Control

Description :

PLC name : Local HMI

Attribute

Type of control : Change window

☐ Active only when designated window opened

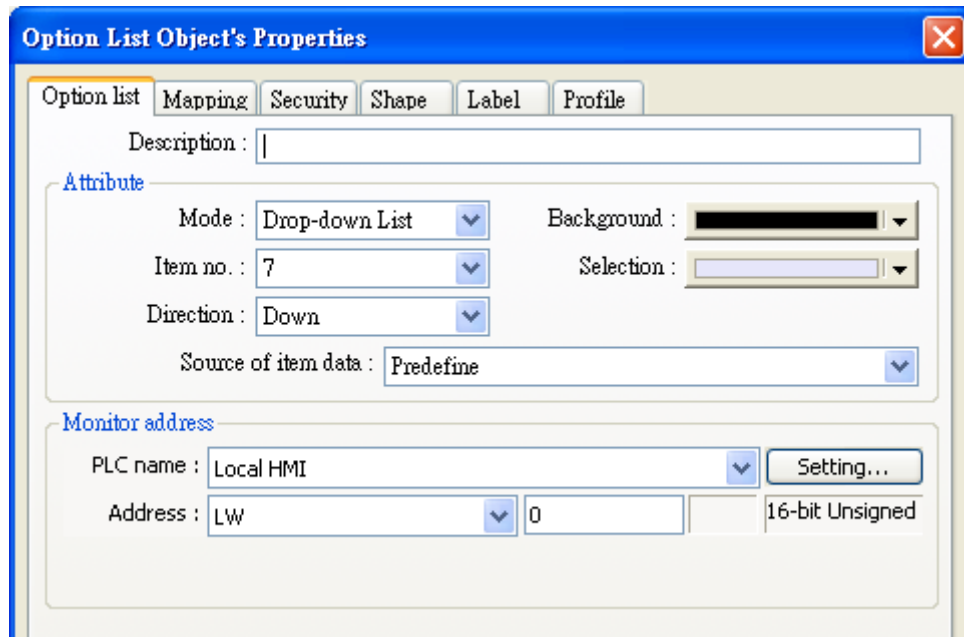
☐ Turn on back light ☐ Clear data after window changed

Trigger address

PLC name : Local HMI

Address : LW 0 ☐ 16-bit Unsigned

2. On Common Window (no.4), create an Option List Object.
In **[Option list]** tab, select **[Source of item data] / [Predefine]**, and set “LW-0” for **[Monitor address]**.
You may set **[Item no.]** based on actual usage, and this demo project is designed with “7” items.



Option List Object's Properties

Option list Mapping Security Shape Label Profile

Description :

Attribute

Mode : Drop-down List Background :

Item no. : 7 Selection :

Direction : Down

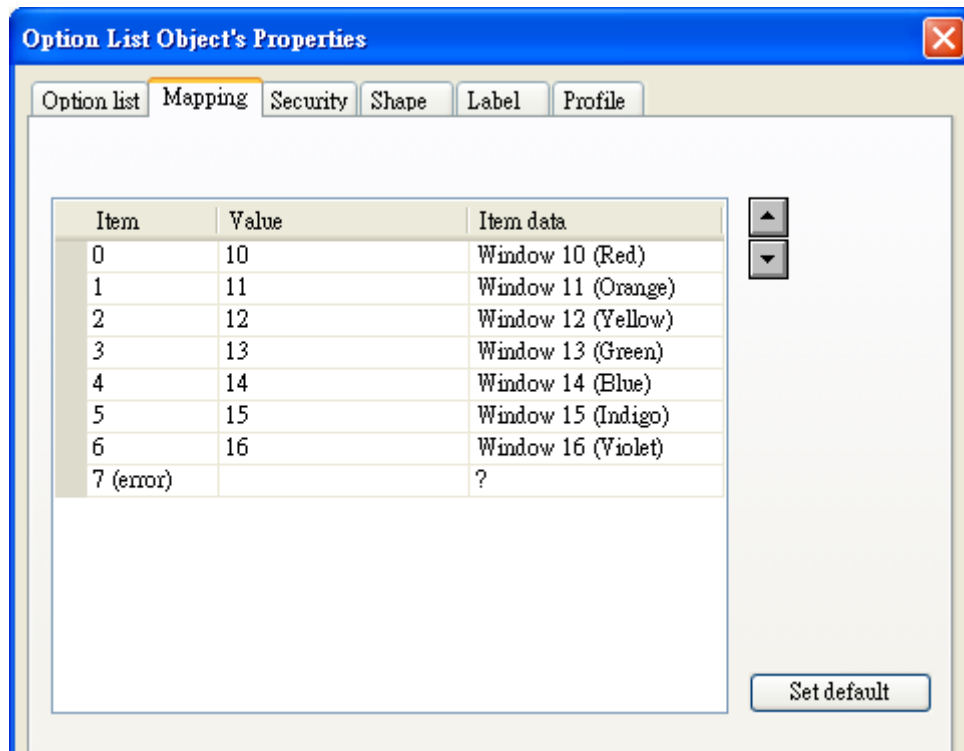
Source of item data : Predefine

Monitor address

PLC name : Local HMI Setting...

Address : LW 0 16-bit Unsigned

- In **[Mapping]** tab, set **[Value]** to the window number to switch. **[Item data]** is for setting the window name shown on Option List Object.



Option List Object's Properties

Option list Mapping Security Shape Label Profile

Item	Value	Item data
0	10	Window 10 (Red)
1	11	Window 11 (Orange)
2	12	Window 12 (Yellow)
3	13	Window 13 (Green)
4	14	Window 14 (Blue)
5	15	Window 15 (Indigo)
6	16	Window 16 (Violet)
7 (error)		?

Set default

3. Addresses

The Object Addresses used in this demo project are listed below: Users can change Addresses and Object ID base on actual usage.

Object	Address	Object ID	Detail
Window 4			
Option List (Predefine)	LW-0	OL_0	Change widow based on predefined items.
Background Object			
PLC Control / Change window	LW-0		Change window