

# Demo Project for FindEventLogDate Function in Macro

## Table of Contents

1. Overview and Operation
2. Setting Up the Screen
3. Addresses

## 1 Overview and Operation

### [Overview]

This demo project is to demonstrate how to use Macro: FindEventLogDate() to gain the date of Event Log. With Event Display Object the content of the Event Log of a specified date can be displayed as shown below.

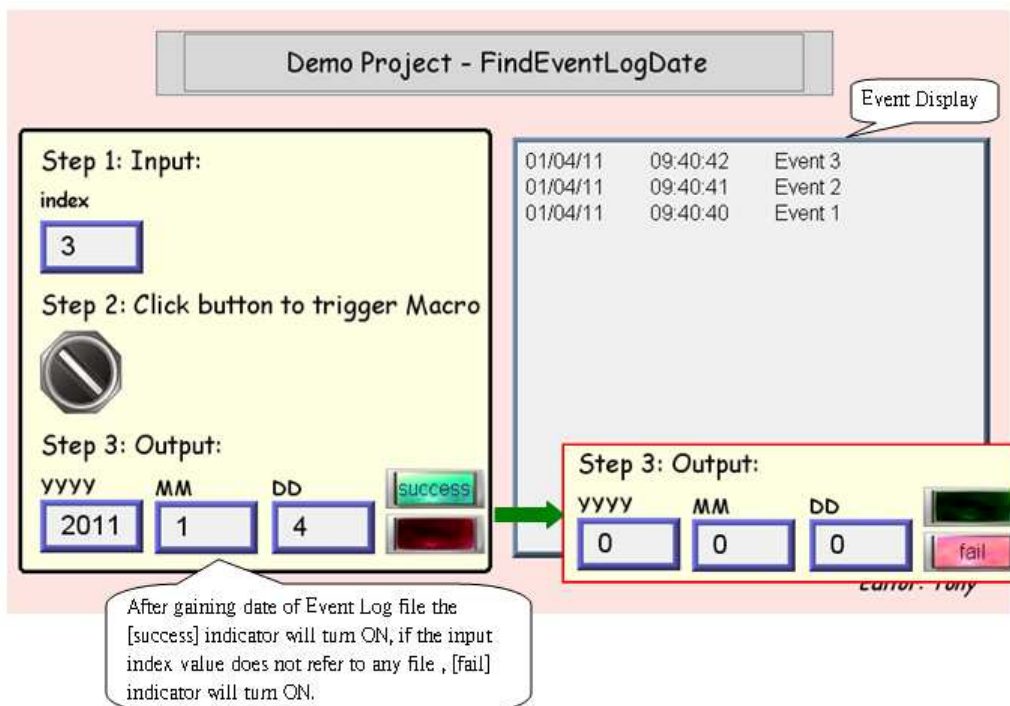
```

1  macro_command main()
2  short index, year, month, day
3  short success, fail
4
5  // get data
6  GetData(index, "Local HMI", LW, 108, 1)
7
8  success = FindEventLogDate(index, year, month, day)
9
10 // set data
11 SetData(year, "Local HMI", LW, 100, 1)
12 SetData(month, "Local HMI", LW, 102, 1)
13 SetData(day, "Local HMI", LW, 104, 1)
14 SetData(success, "Local HMI", LB, 112, 1)
15 fail = not success
16 SetData(fail, "Local HMI", LB, 110, 1)
17
18
19 end macro_command

```

### [Operation]

Please refer to the following operation steps 1~3.



## 2 Setting Up the Screen

2-1 Edit Macro as shown below, the addresses used here are only examples which users are free to change.


```
1  macro_command main()
2  short index, year, month, day
3  short success, fail
4
5  // get data
6  GetData(index, "Local HMI", LW, 108, 1)
7
8  success = FindEventLogDate(index, year, month, day)
9
10 // set data
11 SetData(year, "Local HMI", LW, 100, 1)
12 SetData(month, "Local HMI", LW, 102, 1)
13 SetData(day, "Local HMI", LW, 104, 1)
14 SetData(success, "Local HMI", LB, 112, 1)
15 fail = not success
16 SetData(fail, "Local HMI", LB, 110, 1)
17
18
19 end macro_command
```

2-2 Add LW108 for inputting the Event Log index value.

Step 1: Input:

index

Step 2: Click button to trigger Macro





Step 3: Output:

YYYY

MM

DD

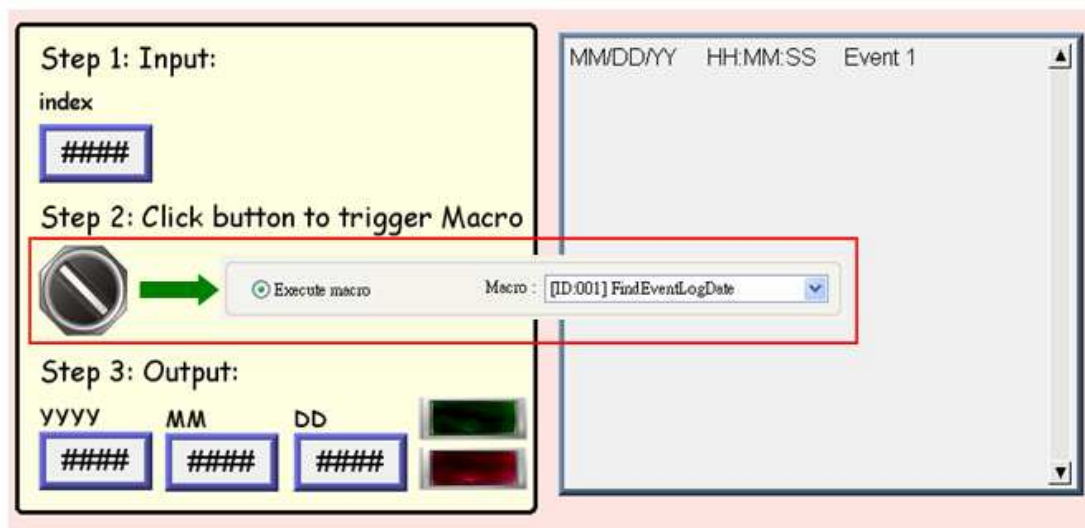




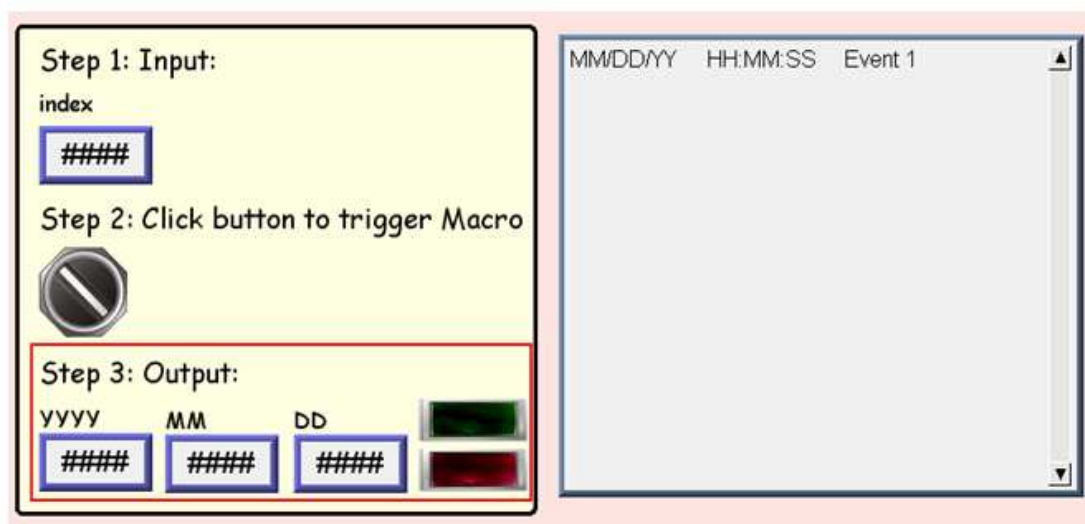
01/13/11	13:08:42	Event 5
01/13/11	13:08:41	Event 4
01/13/11	13:08:41	Event 3
01/13/11	13:08:40	Event 2
01/13/11	13:08:40	Event 1

Editor: Tony

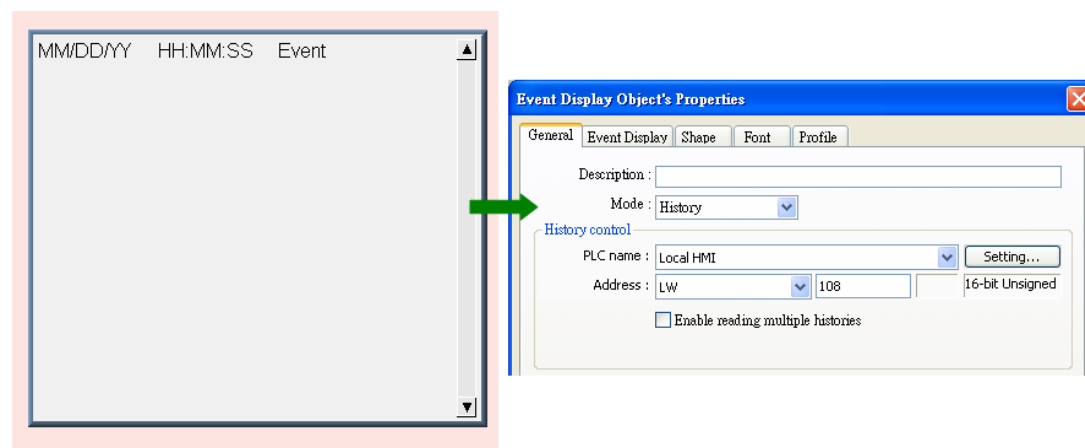
### 2-3 Create a Function Key Object to trigger Macro.



### 2-4 Add LW100, LW102, and LW104 to display Event Log date, and LB112, LB110 to respectively display if the data is successfully gained or not.



### 2-5 Create an Event Display Object, set [History Control Address] to LW108.



### 3 Addresses

The Object Addresses used in this demo project are listed below: Users can change Addresses and Object ID base on actual usage.

Addresses		Object ID	Detail
Window 10			
Bit Lamp	LB110	BL_0	To display fail message
	LB112	BL_1	To display success message
Numeric Display	LW100	NE_0	Input Year
	LW102	NE_1	Input Month
	LW104	NE_2	Input Day
	LW108	NE_3	Display Index
Function Key		FK_0	To trigger macro