

WEINTEK LABS., INC.

# Combo Button

## File Transfer

Demo Project

## Contents

1. Overview and Operation .....	1
2. Setting up the Screen .....	4
3. Addresses .....	8

## 1. Overview and Operation

### Overview

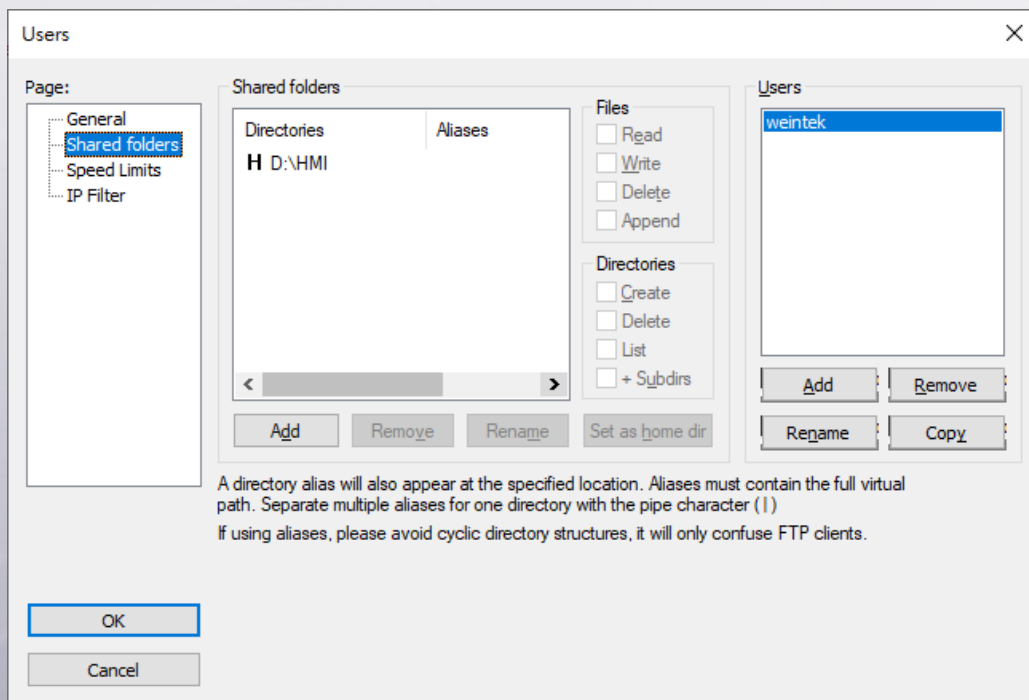
EasyPrinter is not supported on cMT Series models; therefore, to achieve the similar function as EasyPrinter's printer/backup server for cMT Series, Combo Button's File Transfer function is a viable solution. This demo project explains how to use Combo Button's File Transfer function to transfer a file or screen hardcopy file from the USB disk on HMI to FTP

Please note that the method shown in this demo project is applicable only for cMT Series models.

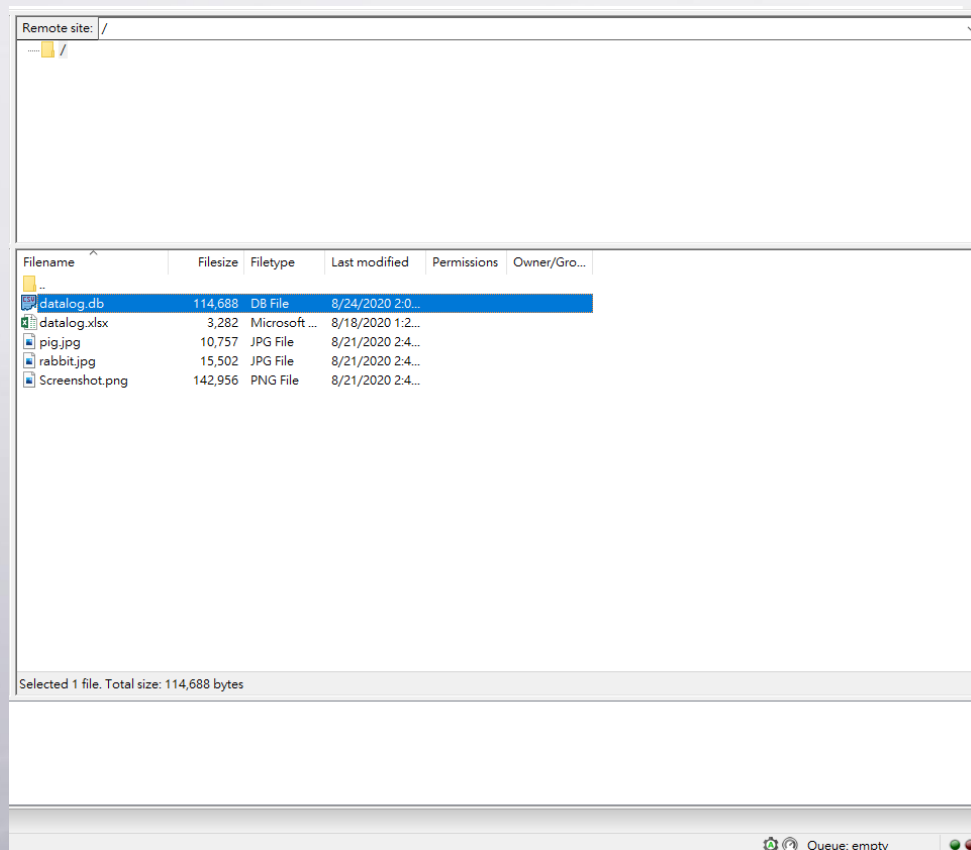
### Operation

**Step 1.** Install FTP server software, add a new user and assign user permissions.

In this demo project the FTP server software used is: FileZilla server.

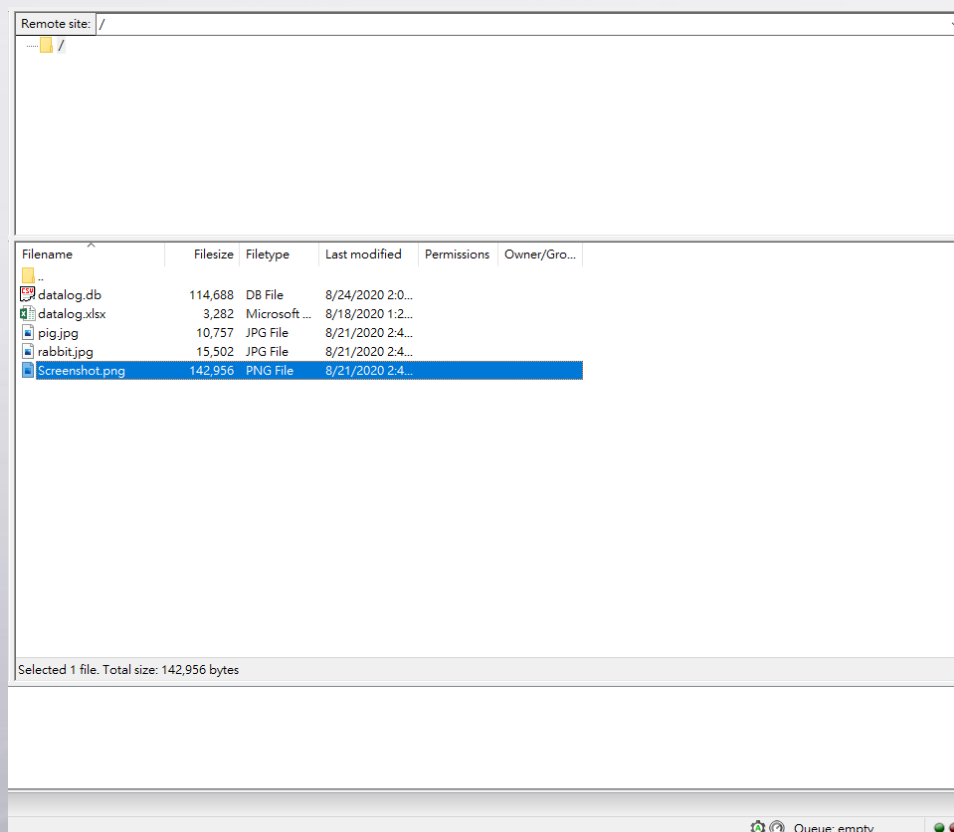
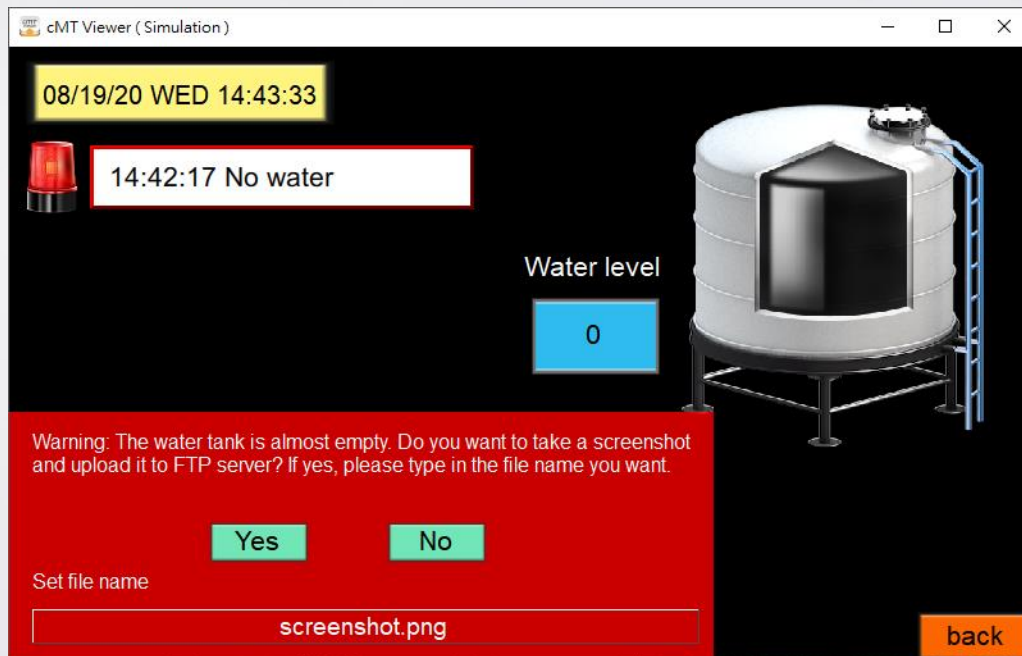


**Step 2.** Follow the steps shown below to select the directory, name the file to be transferred, and then press the "Backup file to FTP server" button to transfer the file to FTP Server.



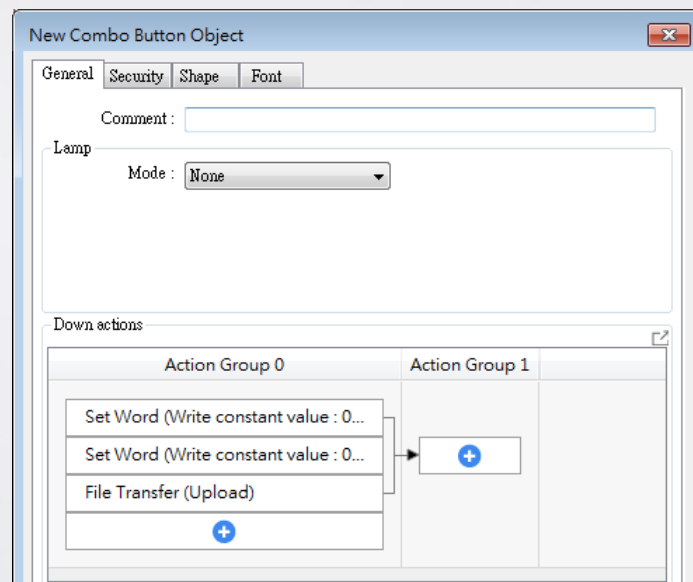
**Step 3.** An alarm is triggered when the water level goes under 30%. The user

can decide whether to take a screenshot of alarm and send it to FTP server. Before transferring the screenshot file, please name the file first.

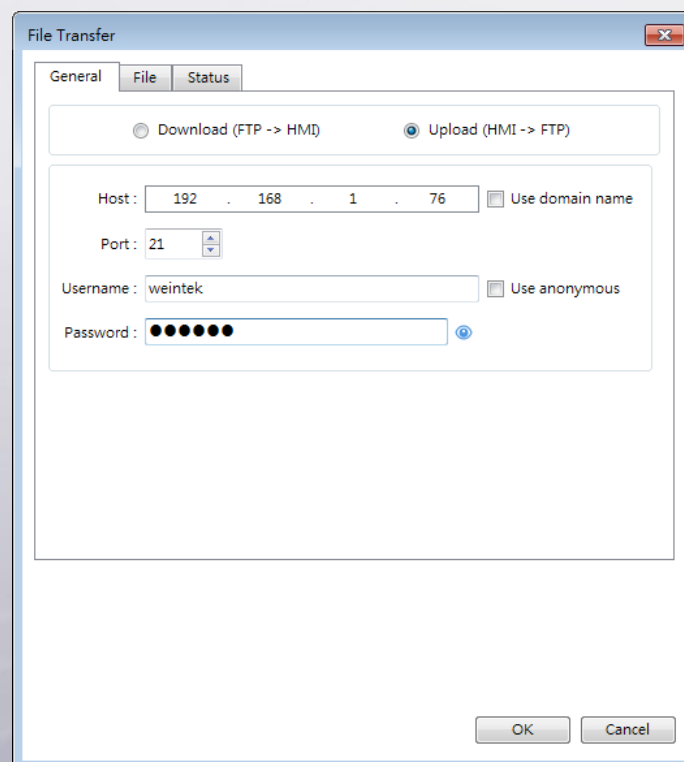


## 2. Setting up the Screen

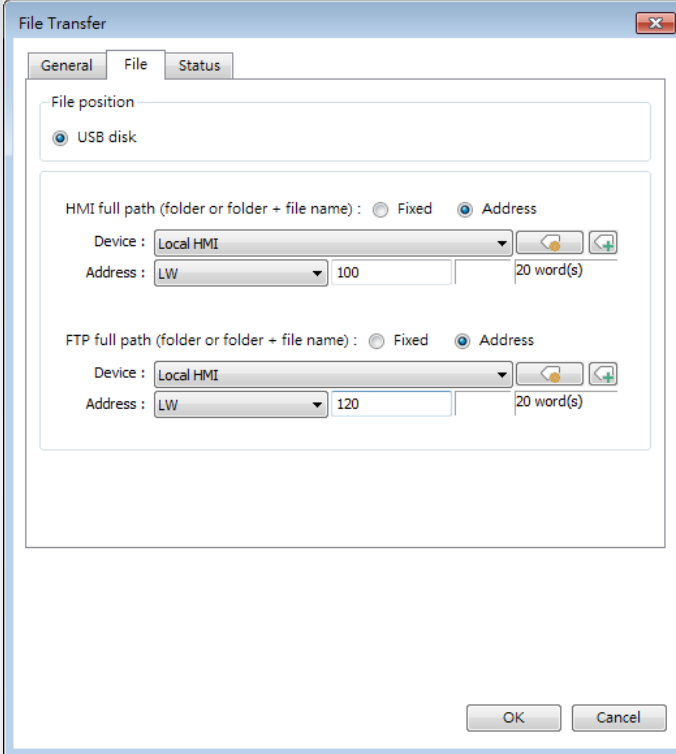
**Step 1.** Create a Combo Button object and add File Transfer to Down Actions.



**Step 2.** In File Transfer settings enter the FTP server's IP address, username and password.



**Step 3.** Specify the file transfer path.



**File Transfer**

General File Status

File position

☒ USB disk

HMI full path (folder or folder + file name) : ☐ Fixed ☒ Address

Device : Local HMI

Address : LW 100 20 word(s)

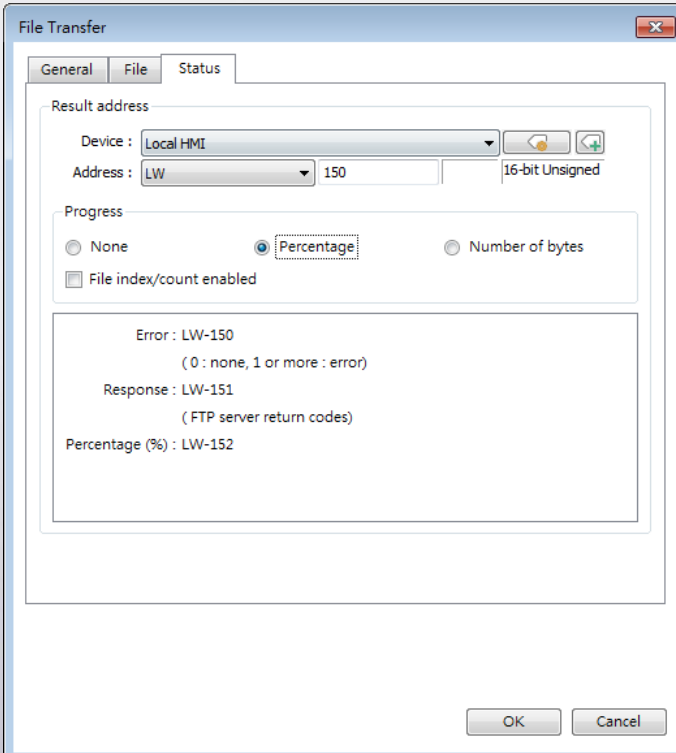
FTP full path (folder or folder + file name) : ☐ Fixed ☒ Address

Device : Local HMI

Address : LW 120 20 word(s)

OK Cancel

**Step 4.** Set the result address.



**File Transfer**

General File Status

Result address

Device : Local HMI

Address : LW 150 16-bit Unsigned

Progress

☐ None ☒ Percentage ☐ Number of bytes

☐ File index/count enabled

Error : LW-150  
( 0 : none, 1 or more : error)

Response : LW-151  
( FTP server return codes)

Percentage (%) : LW-152

OK Cancel

**Step 5.** Create a PLC Control object, set its Type to Screen Hardcopy and select USB disk as output destination. The filename can be set.

**PLC Control**

Comment :

Device :

Attribute

Type :

☐ Active only when designated window opened

☐ Rotate image 90 degrees

Trigger address

Device :

Address :

Screen hardcopy

Trigger mode :

Source window

☒ Current base window ☐ Window no. from register ☐ Designate window no.

Output to :

☒ Customized filename handling

Settings...

OK Cancel

**Customized Filename Handling**

Folder name

☐ Dynamic format

Year (2000-2038) Year (00-99) Month (01-12) Day (01-31)

Week (00-53) Weekday (0-6)

Hour (00-23) Minute (00-59) Second (00-59) %

Format :

Example :

File name

☐ Dynamic format

Year (2000-2038) Year (00-99) Month (01-12) Day (01-31)

Week (00-53) Weekday (0-6)

Hour (00-23) Minute (00-59) Second (00-59) %

Format : .png

Example :

%Y Year (2000-2038)  
 %y Year, last two digits (00-99)  
 %m Month as a decimal number (01-12)  
 %d Day of the month (01-31)  
 %W Week number (00-53)  
 %w Weekday, 0 is Sunday (0-6)  
 %H Hour in 24h format (00-23)  
 %M Minute (00-59)  
 %S Second (00-59)  
 %% %

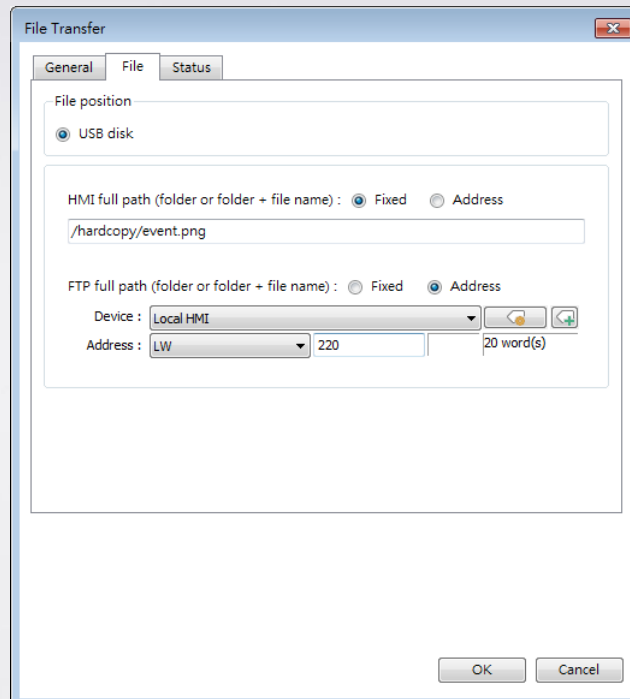
OK Cancel

**Step 6.** In File Transfer settings designate the same path as in PLC Control

DEM20009E\_20200825



settings to transfer file to FTP server.



The image shows a 'File Transfer' dialog box with three tabs: 'General', 'File', and 'Status'. The 'General' tab is active. It contains the following settings:

- File position:** A dropdown menu with 'USB disk' selected.
- HMI full path (folder or folder + file name):** Radio buttons for 'Fixed' (selected) and 'Address'. Below is a text field containing '/hardcopy/event.png'.
- FTP full path (folder or folder + file name):** Radio buttons for 'Fixed' and 'Address' (selected).
- Device:** A dropdown menu with 'Local HMI' selected. To its right are two small icons: a folder and a document.
- Address:** A dropdown menu with 'LW' selected, followed by a text field containing '220'. To the right of this field is a label '20 word(s)'.

At the bottom right of the dialog are 'OK' and 'Cancel' buttons.

### 3. Addresses

The addresses of key objects used in this demonstration are listed below, please adjust as necessary.

Object	Address	Object ID	Description
<b>Window 10</b>			
Set Word	LW-0	SW_0	Data source for Data Sampling
ASCII	LW-120	AE_0	FTP full path
Bar Graph	LW-152	BG_0	File transfer percentage
Combo Button		CB_0	Combo Button – File Transfer
Word Lamp	LW-150	WL_0	File Transfer error
File Browser	LW-100	FR_0	File browser
ASCII	LW-100	AD_0	HMI full path
<b>Window 11</b>			
Combo Button		CB_0	Combo Button – File Transfer
Set Word	LW-300	SW_0	Setting water level
Bar Graph	LW-300	BG_0	Water level
Direct Window	LB-50	WC_0	Alarm window
Numeric	LW-300	NE_0	Value of water level
Function Key		FK_0	Return to previous window
<b>Window 12</b>			
Combo Button		CB_0	Combo Button – File Transfer
ASCII	LW-220	AE_0	FTP full path
File Browser		FR_0	File browser
Set Bit	LB-50	SB_0	Close Direct Window
Bar Graph	LW-1	BG_0	Upload state