

WEINTEK LABS., INC.

# Touch Gesture

Operating objects using Touch  
Gestures

Demo Project

**Contents**

- 1. Overview and Operation ..... 1
- 2. Setting up the Screen ..... 2
- 3. Address Settings ..... 3

## 1. Overview and Operation

### Overview

Multi-touch enables a smartphone or tablet to recognize multiple points of contact and movements with the surface (e.g. Pinch with all five fingers to close the app), and this technology is now adopted by HMI. With the Touch Gesture object that supports up to 23 touch gestures, operating HMI can be as easy as using a smartphone or tablet. This demo project shows how to use Touch Gestures.





### Operation

As shown in the following screenshot of this project, seven gestures are used. Slide one finger up / down / left / right to change the angle of view of the picture.

Slide four fingers up/down to open/close the popup window.

Pinch with all five fingers to switch to screen saver window.

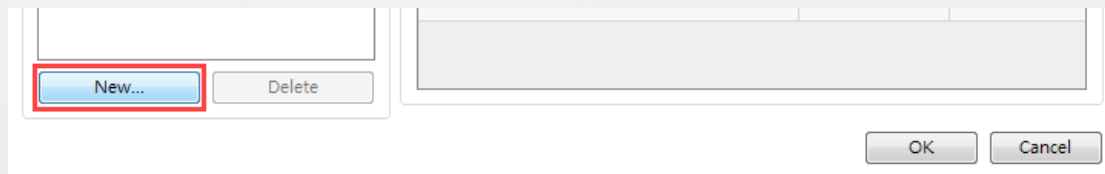
**Try the following gestures by this project:**

		<b>Rotate Left/Right</b> Slide one finger left or right to change the view angle.
		<b>Rotate Up/Down</b> Slide one finger up or down to change the view angle.
		<b>Fast system settings window</b> Slide four fingers up/down to open/close the fast system settings window.
		<b>Screen Saver</b> Pinch with all five fingers to switch to screen saver window.

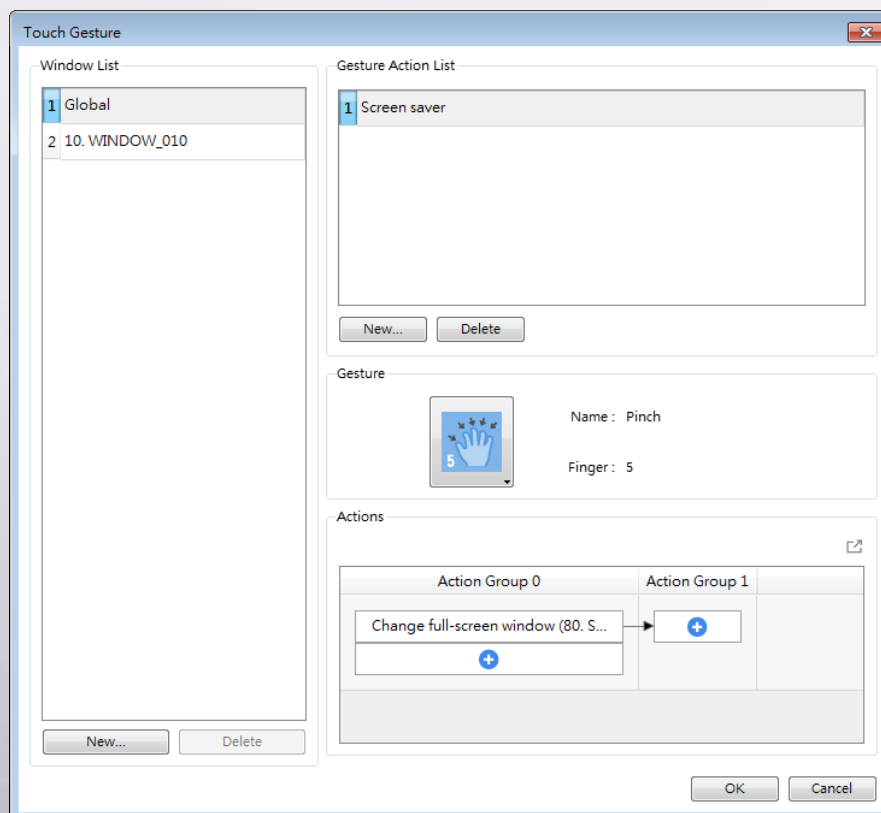
## 2. Setting up the Screen

**Step 1.** Click [Objects] » [Action-related] » [Touch Gesture] to open the settings window.

**Step 2.** Click [New] in Window List group box to select a window in which the touch gesture is used.



**Step 3.** Click [New] in Gesture Action List group box, select a gesture in Gesture group box, and then specify the action triggered by the selected gesture in Action group box.



**Step 4.** Other actions are set in a similar manner. Download the project to HMI after setup has completed.

### 3. Address Settings

The addresses of key objects used in this demonstration are listed below, please adjust as necessary.

Object	Address	Object ID	Description
<b>Window 4</b>			
<b>Direct Window</b>	LB-0	WC_0	Popup window.
<b>Window 10</b>			
<b>Word Lamp</b>	LW-0	WL_0	Shows different angle of views of picture.
<b>Window 11</b>			
<b>Toggle Switch</b>	LB-9018	TS_0	Shows / Hides mouse cursor.
<b>Toggle Switch</b>	LB-9019	TS_1	Enables / Disables sound output.
<b>Toggle Switch</b>	LB-9020	TS_2	Shows / Hides system setting bar.
<b>Toggle Switch</b>	LB-12092	TS_3	Enables / Disables VNC.
<b>Slider</b>	LW-9040	SL_0	Lightens /Darkens HMI backlight.
<b>Slider</b>	LW-9051	SL_1	Adjusts sound volume.
<b>ASCII</b>	LW-10884	AE_0	Shows HMI name.
<b>Date/Time</b>		DC_0	Shows HMI date / time.
<b>Numeric</b>	LW-9025	ND_0	Shows CPU usage.
<b>Background</b>			
<b>Touch Gesture</b>			Global: Changes base window to window no. 80
<b>Touch Gesture</b>	LB-0, LB-1		Global: Opens window no. 11 and plays a sound from sound library.
<b>Touch Gesture</b>	LB-0, LB-2		Global: Closes window no. 11 and plays a sound from sound library.
<b>Touch Gesture</b>	LB-3		Triggers macro command Minus and

## Touch Gesture



			plays a Beep sound.
<b>Touch Gesture</b>	LB-3		Triggers macro command Add and plays a Beep sound.
<b>Touch Gesture</b>	LB-3		Triggers macro command Left and plays a Beep sound.
<b>Touch Gesture</b>	LB-3		Triggers macro command Right and plays a Beep sound.
<b>PLC Control</b>	LB-1		Plays Show sound in sound library.
<b>PLC Control</b>	LB-2		Plays Hide sound in sound library.
<b>PLC Control</b>	LB-3		Plays Beep sound in sound library.