

# TOSHIBA TOSVERT VF (EtherNet/IP)

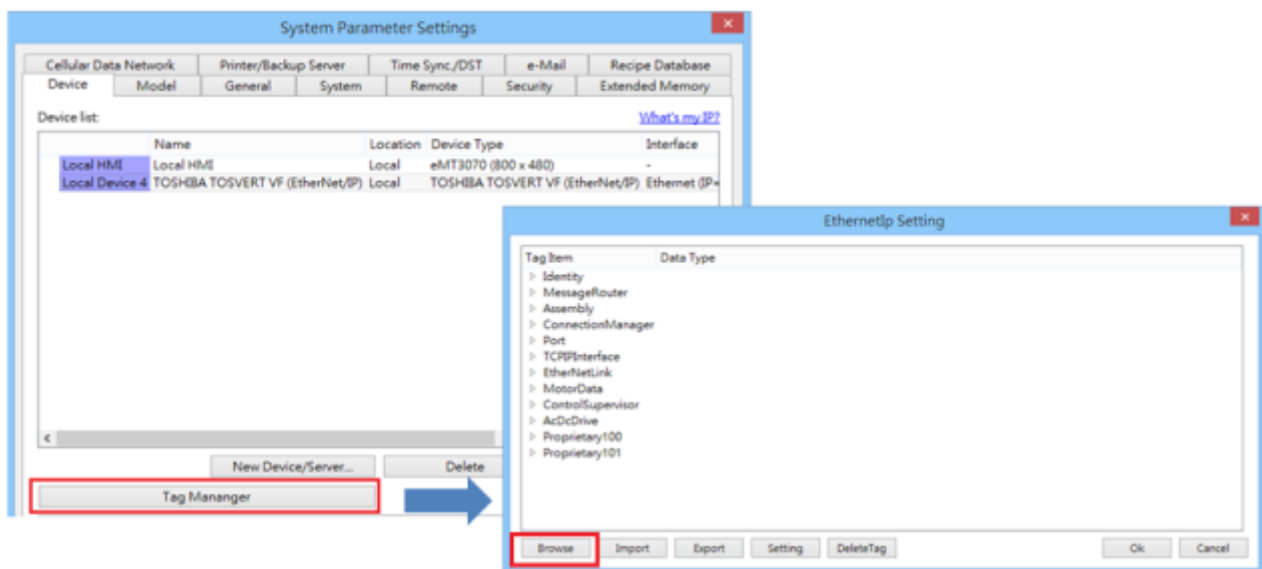
Supported Series: TOSHIBA TOSVERT VF (EtherNet/IP)

Website: <http://www.toshiba-machine.co.jp>

## HMI Setting:

Parameters	Recommended	Options	Notes
PLC type	TOSHIBA TOSVERT VF (EtherNet/IP)		
PLC I/F	Ethernet		
Port no.	44818		

Please click **[Tag Manager]** when adding this driver to initiate tag information. To edit address tag, please see the factory manual.



The following is an example of how to add Vendor ID in Tag Editor. See 3.2.3 *Identity Object* in factory manual for the detail of this ID.

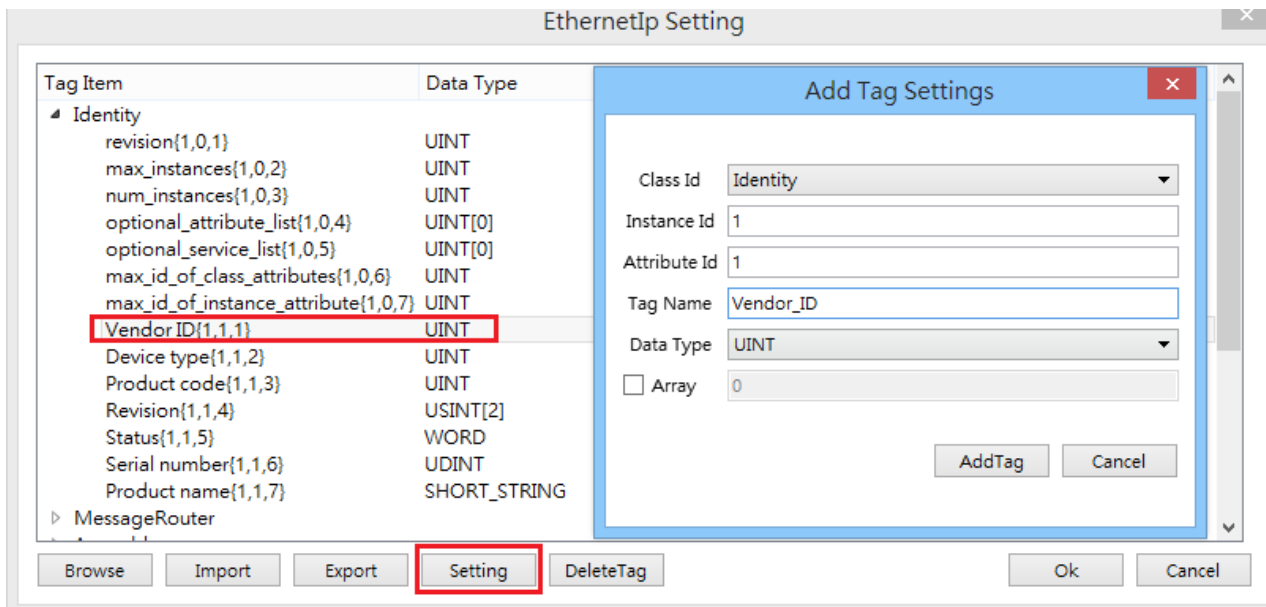
### 3.2. Identity Object

Class Code: 01<sub>HEX</sub>

#### 3.2.3. Instance Attributes

Instance ID	Attribute ID	Access Rule	Name	Data Type	Value
1	1	Get	Vendor ID	UINT	741 <sub>DEC</sub> (Crevis Co., Ltd)
	2	Get	Device Type	UINT	0C <sub>HEX</sub> (Communications Adapter)
	3	Get	Product Code	UINT	512 <sub>DEC</sub> (NA-9188)
	4	Get	Revision	Structure of:	
			- Major	USINT	1 ~ 9
			- Minor	USINT	1 ~ 255

Under Struct-Defined select Identity to add Vendor\_ID. {1,1,1} represents {**Class code** , **Instance ID** , **Attribute ID**}. Enter "UINT" in Data Type field according to the factory manual. When finished, this data member can be found in Identity Object.



## Support Device Type:

Data type	EasyBuilder data format	Memo
Bool	bit	
Byte	16-bit BCD, Hex, Binary, Unsigned	8-bit
SInt	16-bit BCD, Hex, Binary, Signed	8-bit
USInt	16-bit BCD, Hex, Binary, Unsigned	8-bit
Word	16-bit BCD, Hex, Binary, Unsigned	16-bit
Int	16-bit BCD, Hex, Binary, Signed	16-bit
UInt	16-bit BCD, Hex, Binary, Unsigned	16-bit
DWord	32-bit BCD, Hex, Binary, Unsigned	32-bit
DInt	32-bit BCD, Hex, Binary, Signed	32-bit
Real	32-bit Float	32-bit
UDInt	32-bit BCD, Hex, Binary, Unsigned	32-bit
Array	Word array for ASCII input and display	Length=word

## Wiring Diagram:

### Ethernet cable:

