

SAIA PCD S-BUS Mode

Supported Series: SAIA PCD series S-Bus mode.

Website: <http://www.saia-burgess.com/>

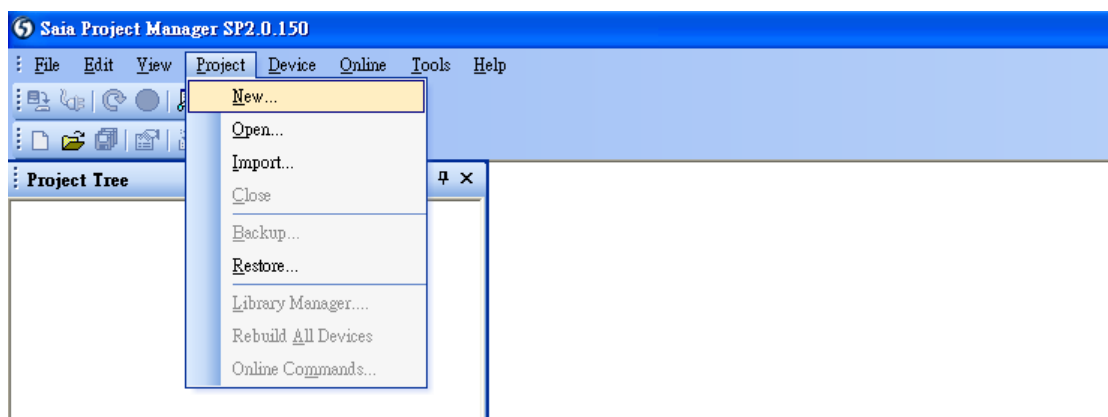
HMI Setting:

Parameters	Recommended	Options	Notes
PLC type	SAIA PCD S-BUS Mode		PDS driver
PLC I/F	RS232	RS232, RS485	
Baud rate	9600	9600, 19200, 38400	
Data bits	8	7,8	
Parity	None	Even, Odd, None	
Stop bits	1	1	
PLC sta.	0	0-255	

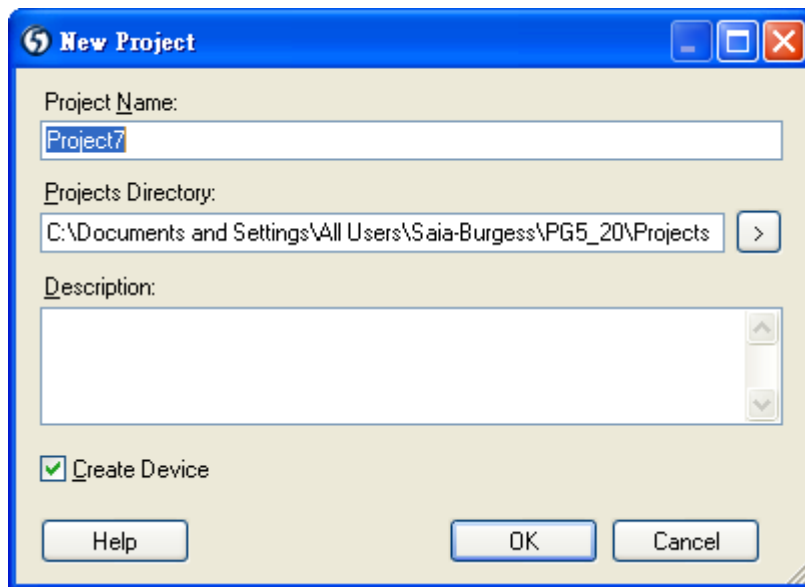
PLC Setting:

Communication mode	9600,N,8,1 (default)
RS232	Port 0-Type: RS232
RS485 2W	S-BUS Mode: Data(S2), Port 1-Type: RS485

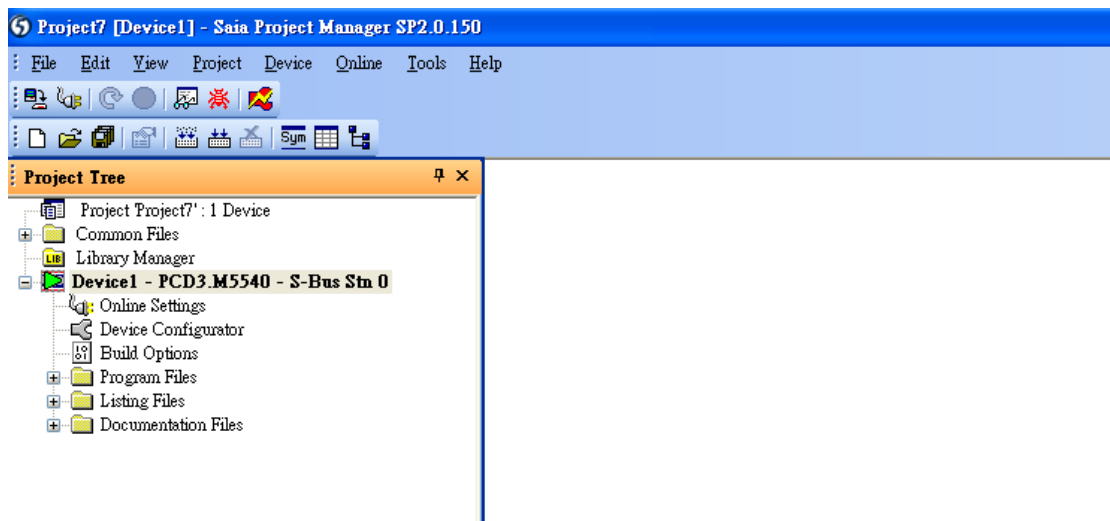
1. Open Saia Project Manager SP2.0.150 and create a new project.



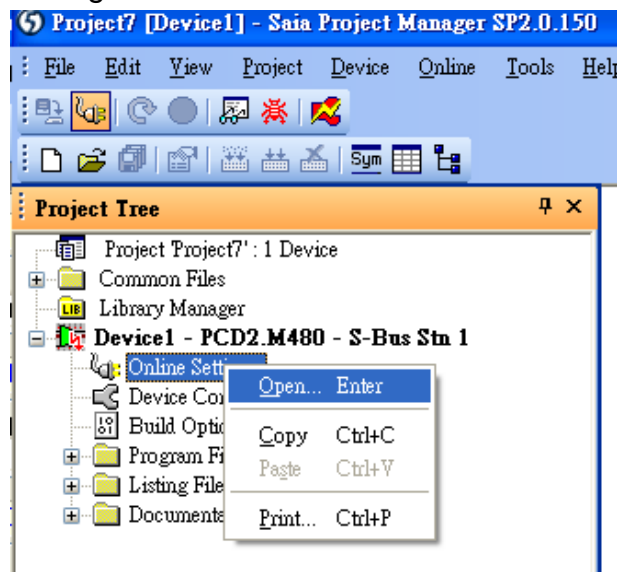
2. Give a project name.



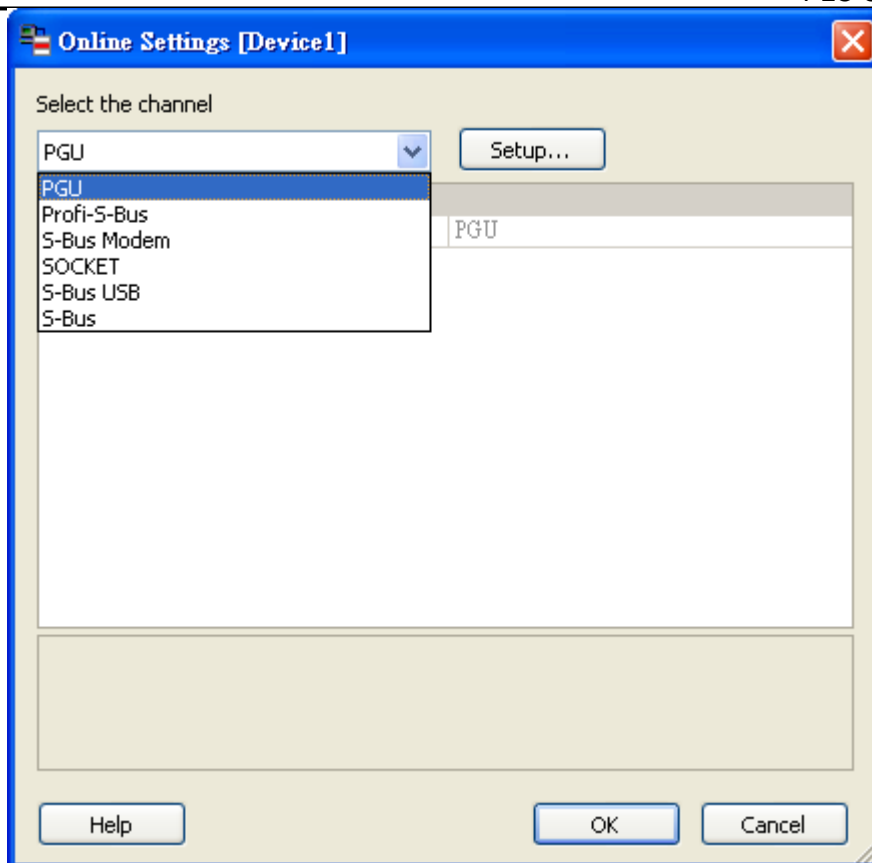
3. Create a new project as below.



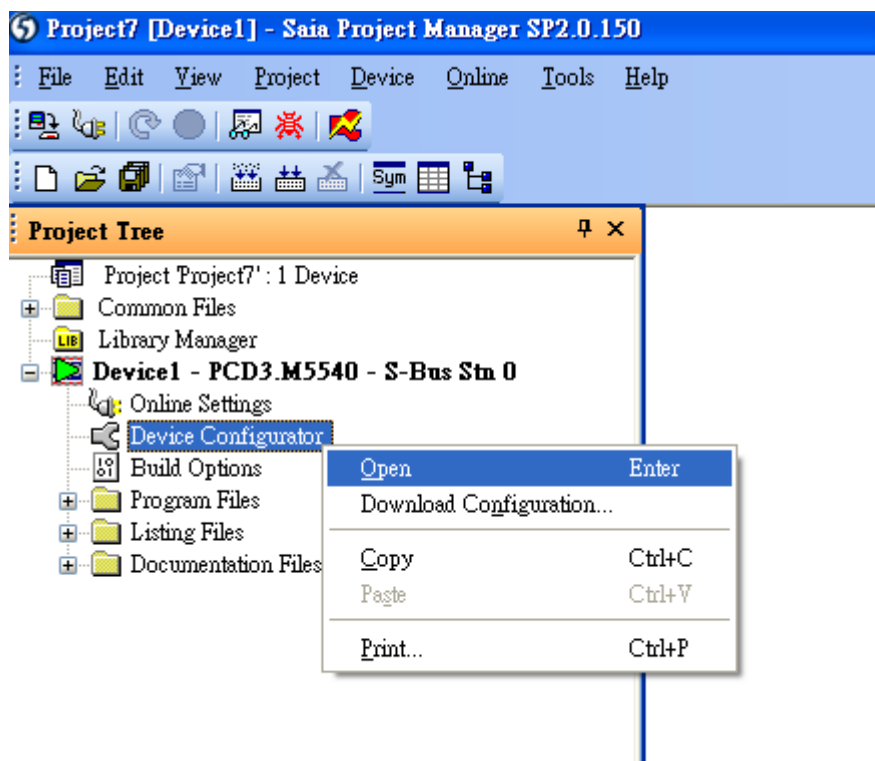
4. Go to "Online Setting".



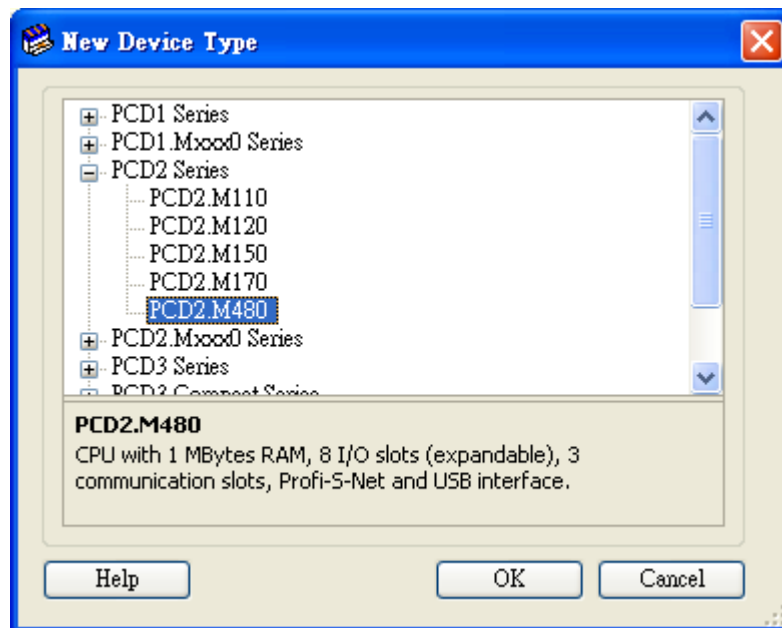
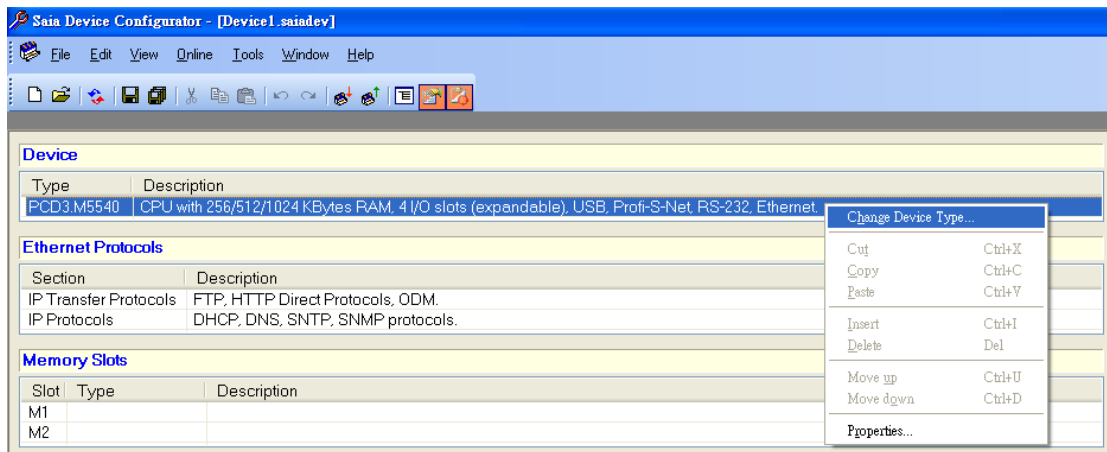
5. Select "PGU".



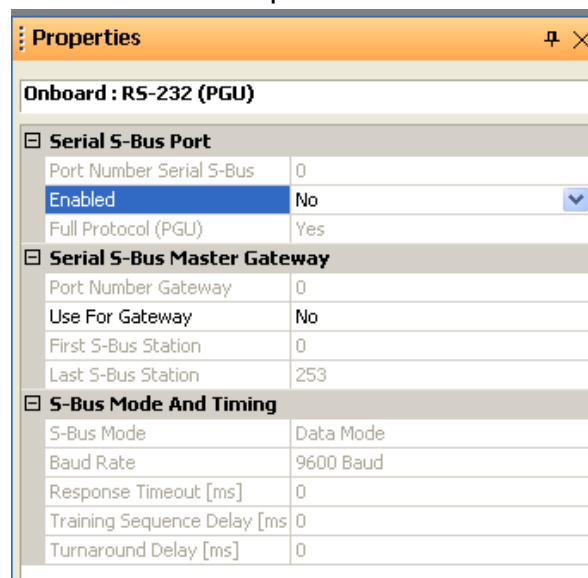
6. Go to "Device Configurator".



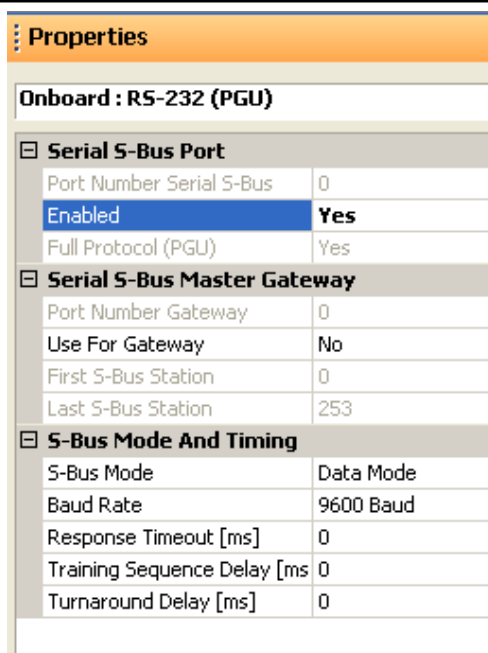
7. Click "Change Device Type" to select your PLC model.



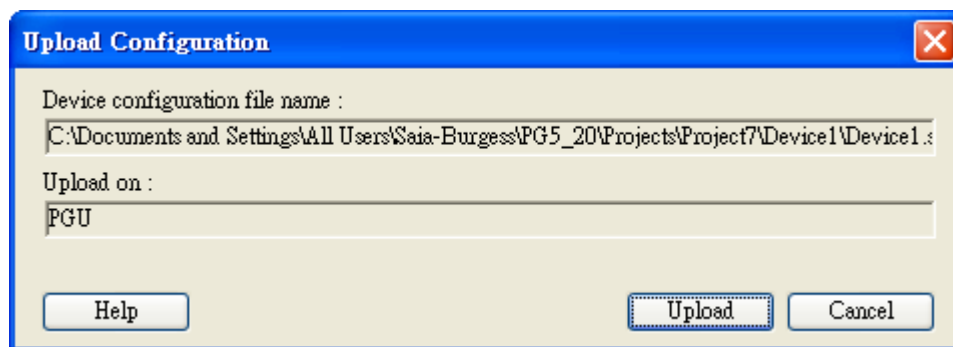
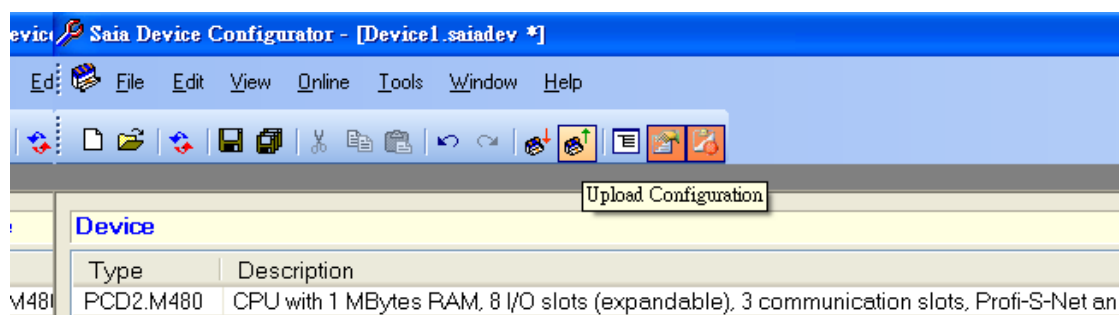
8. Select RS232 (PGU) in Type and then right click mouse on Onboard Communications and select " Properties".



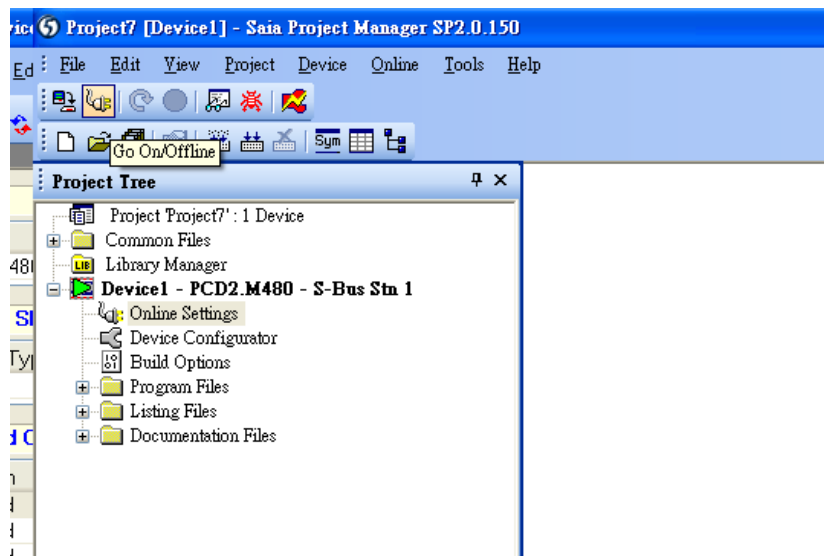
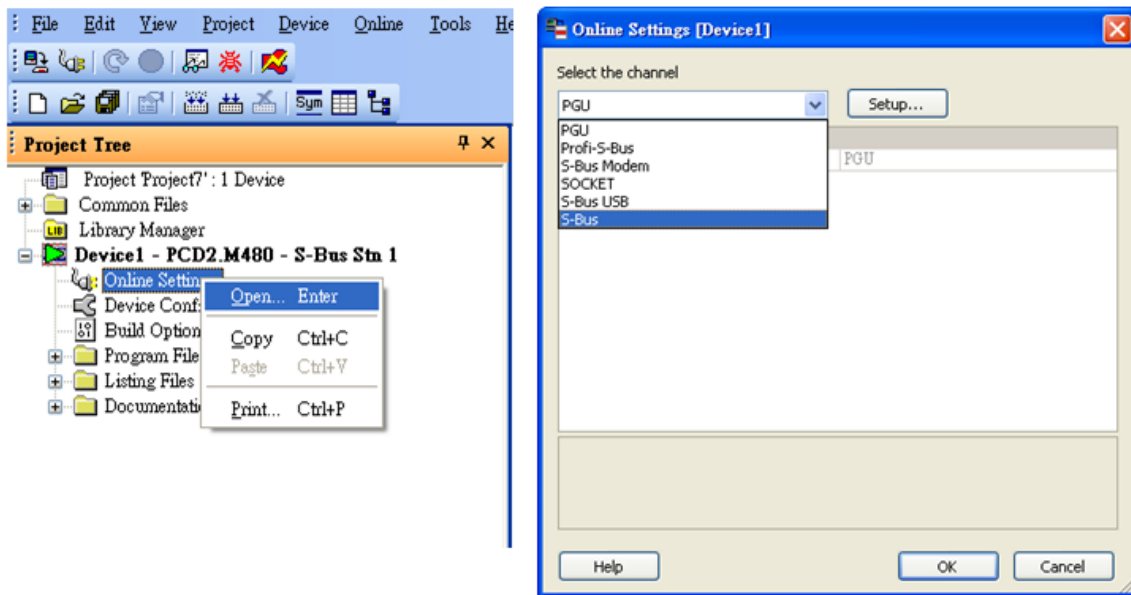
9. Select "Yes" in Series S-Bus Port: Enabled.



10. Set parameters in S-Bus Mode and Timing then upload to PLC.



11. Go to Online Settings >> Open to select S-Bus for finishing the PLC settings.



Device Address:

Bit/Word	Device type	Format	Range	Memo
B	Flag	DDDDD	0 ~ 14335	
B	Output	DDDD	0 ~ 8091	
B	Input	DDDD	0 ~ 8091	
B	Reg_Bit	DDDDdd	0 ~ 1638331	dd: Bit no. (00~31)
B	DBn_Bit	DDDDDDDDDDdd	0 ~ 53601638331	
DW	Register	DDDDD	0 ~ 16383	
DW	Counter	DDDD	0 ~ 1599	
DW	Timer	DDDD	0 ~ 1599	
DW	Reg_Float	DDDDD	0 ~ 16383	support single float point
DW	DBn	DDDDDDDDDD	0 ~ 536016383	

Bit/Word	Device type	Format	Range	Memo
DW	DB_String	DDDDDDDDDD	0 ~ 536016383	
DW	R_String	DDDDD	0~16383	
DW	DB_Float	DDDDDDDDDD	0 ~ 536016383	
DW	Text	DDDDDDDD	0~1638300	

Wiring Diagram:

Diagram 1

RS-232 (SAIA PCD PGU Port RS232 9P D-Sub)

The serial port pin assignments may vary between HMI models, please click the following link for more information.

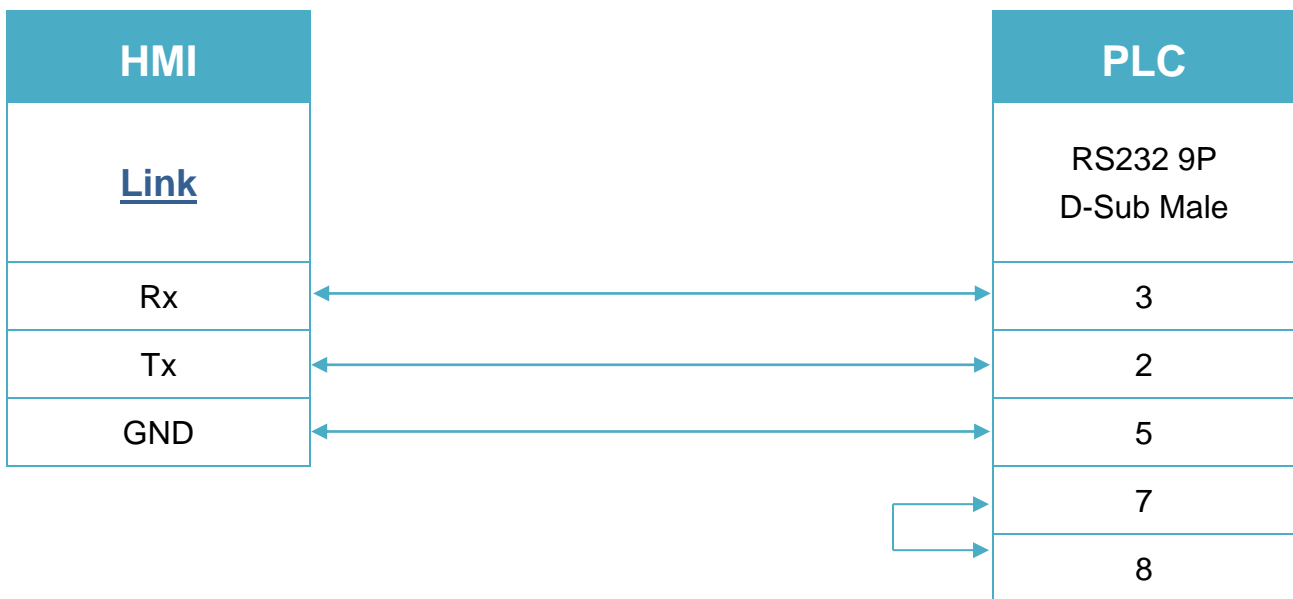


Diagram 2

RS-485 2W (SAIA PCD1 Port #1 (Port #0) Terminal)

The serial port pin assignments may vary between HMI models, please click the following link for more information.

