

User Manual

Activate CODESYS Feature on cMT

This guide walks through the activation steps for CODESYS features on cMT HMIs.

UM018005E_20210203

Table of Contents

1. Overview	1
2. Supported Devices	1
3. Activation Steps	2
Activate on HMI	2
Activate on HMI web server	6
4. Activation Error Codes	11

1. Overview

CODESYS PLC can be run on cMT HMIs with a valid CODESYS Activation License. This guide walks through the required activation steps. For programming CODESYS project or installation, please refer to cMT+CODESYS and Remote I/O Quick Start Guide.

Notes:

1. After the HMI is activated, it cannot be cancelled.
2. PLC Web Browser object in EasyBuilder Pro cannot be used after CODESYS is activated on HMI.

2. Supported Devices

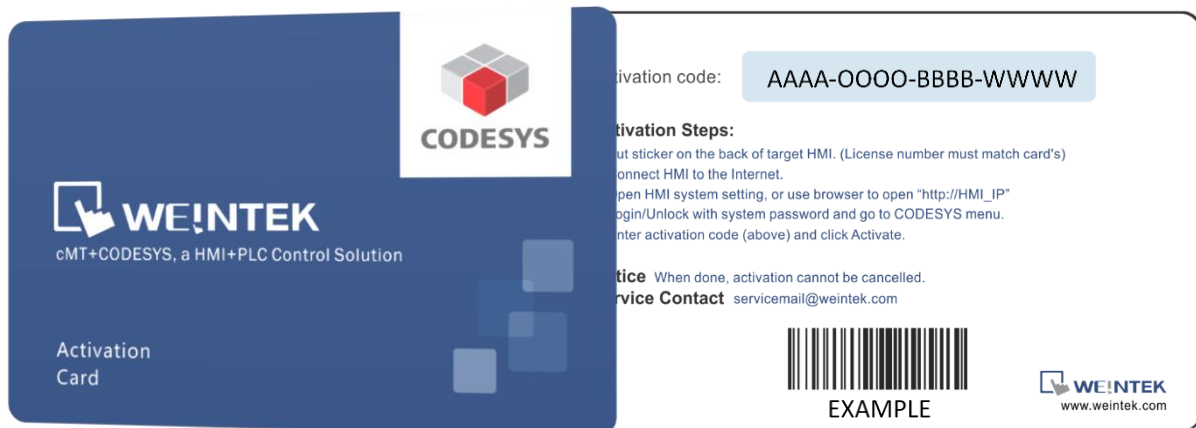
1. cMT3072 with OS version 20180426 or later
2. cMT3090 with OS version 20180410 or later
3. cMT3151 with OS version 20180426 or later

3. Activation Steps

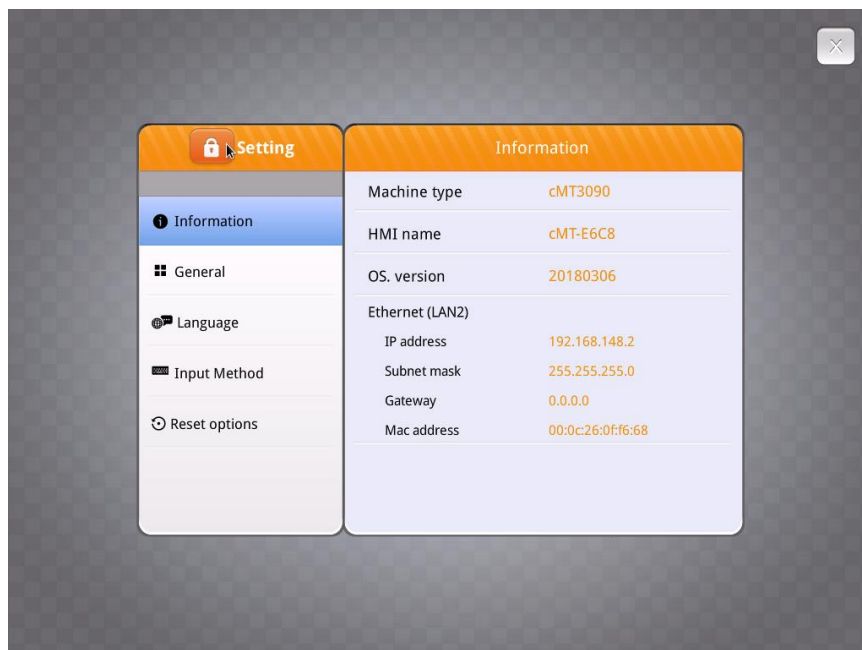
You can activate CODESYS feature on HMI or using HMI web server.


Activate on HMI

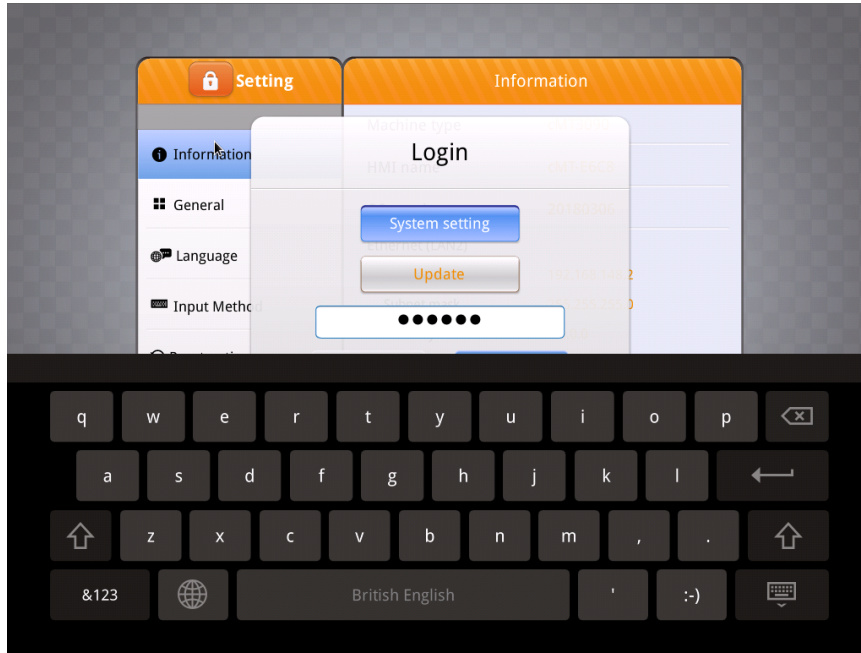
- Step 1.** Obtain a CODESYS activation card with the license sticker. Make sure the serial number (starting with CN) on the card and sticker match.
- Step 2.** Put the license sticker on the back of the target HMI.
- Step 3.** Scratch off the silver cover on the activation code to reveal it.



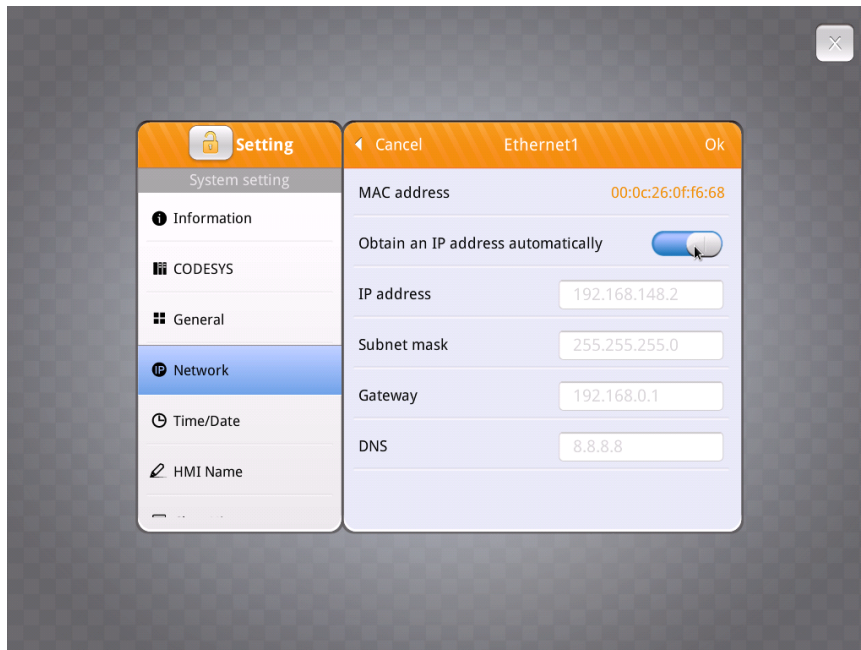
- Step 4.** Connect the HMI to the Internet.
- Step 5.** On HMI, click start button to call up HMI system setting.



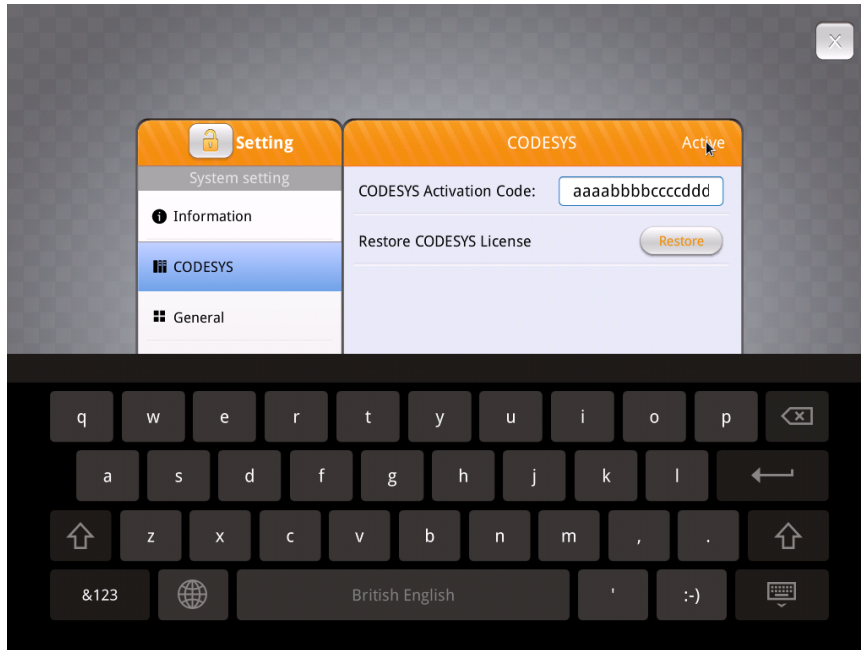
- Step 6.** Click  lock icon to unlock system settings.
- Step 7.** Enter your system password and click **Ok**. (Check installation manual for default password)



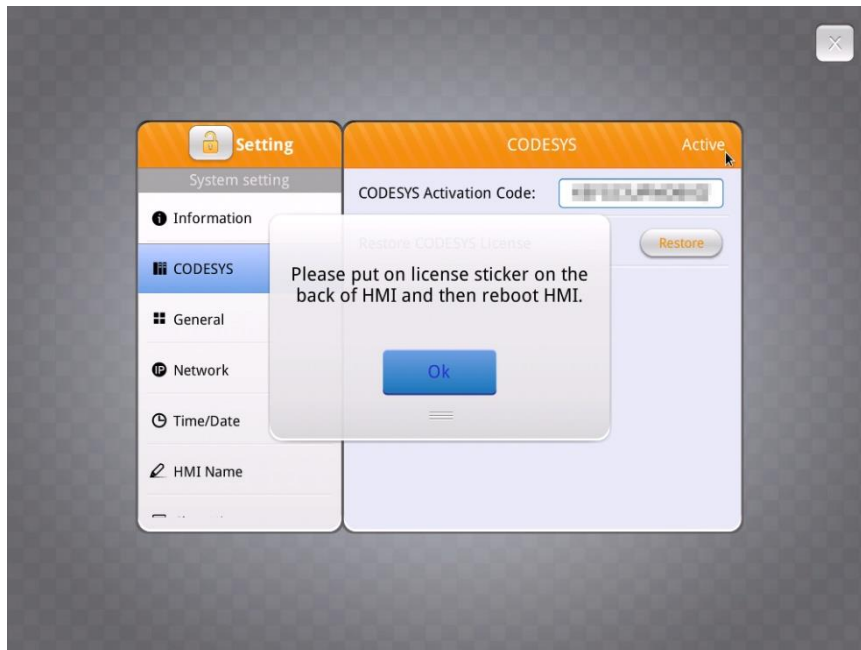
Step 8. Go to **Network** tab and make sure the HMI has a working network setting. Remember to click **Ok** to save. If there is a router in local network, HMI can automatically obtain the network setting.



Step 9. Go to **CODESYS** tab and enter your activation code from activation card. Click **Activate** to activate and enable CODESYS feature.



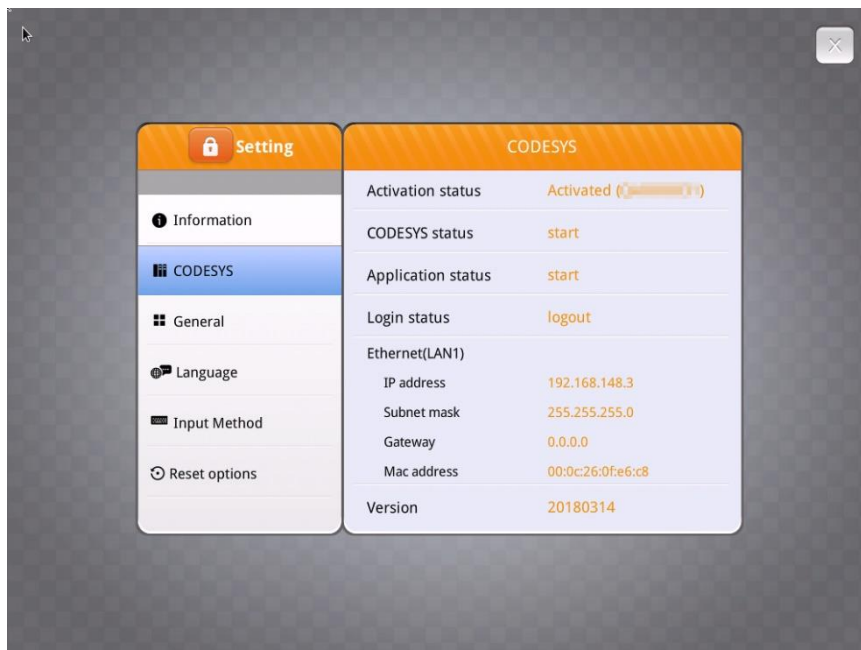
Step 10. If activation succeeds, you will see the message “Please put on license sticker on the back of HMI and then reboot HMI.” If you met problem, please refer to the last section “Activation Error Codes”.



Step 11. The activation is successful. Reboot HMI and you will notice the logo changes.



Step 12. After HMI starts, click start button to call up system information. You will see a new CODESYS tab.

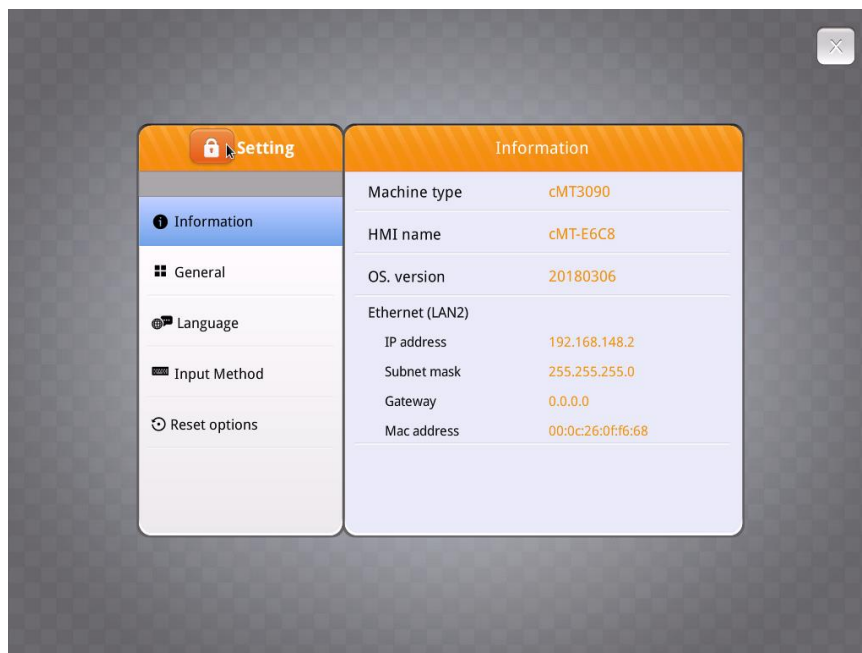


Activate on HMI web server

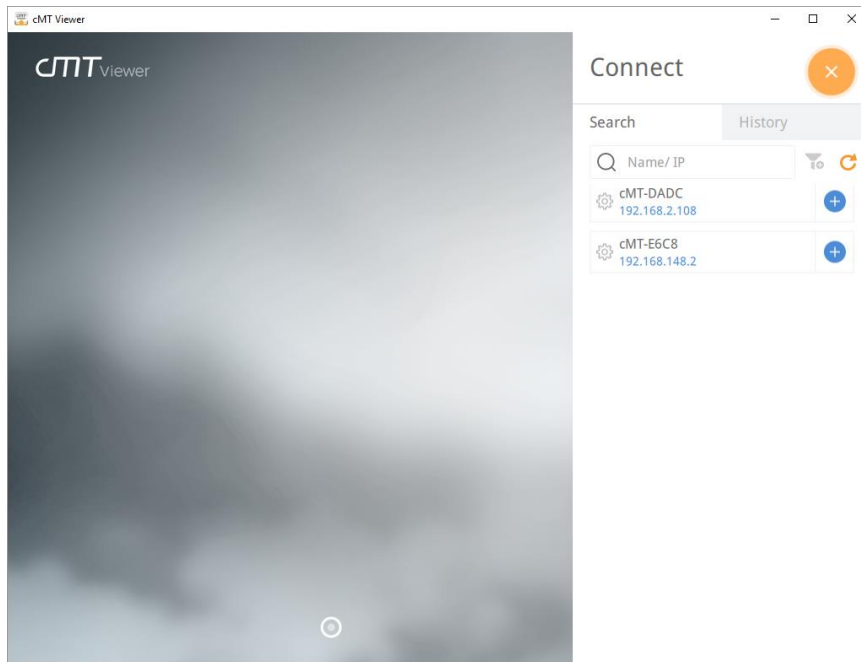
- Step 1.** Obtain a CODESYS activation card with the license sticker. Make sure the serial number (starting with CN) on the card and sticker match.
- Step 2.** Put the license sticker on the back of the target HMI.
- Step 3.** Scratch off the silver cover on the activation code to reveal it.



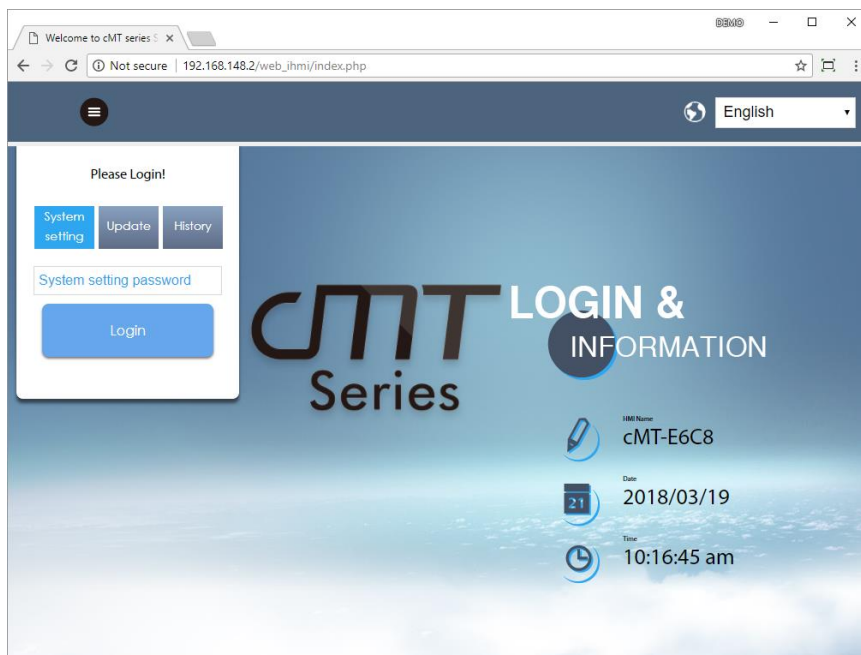
- Step 4.** Connect the HMI to the Internet.
- Step 5.** Find the HMI IP address. You have several choices.
 - (1) Open HMI system setting to check the IP address.



- (2) Open cMT Viewer and search for the HMI.

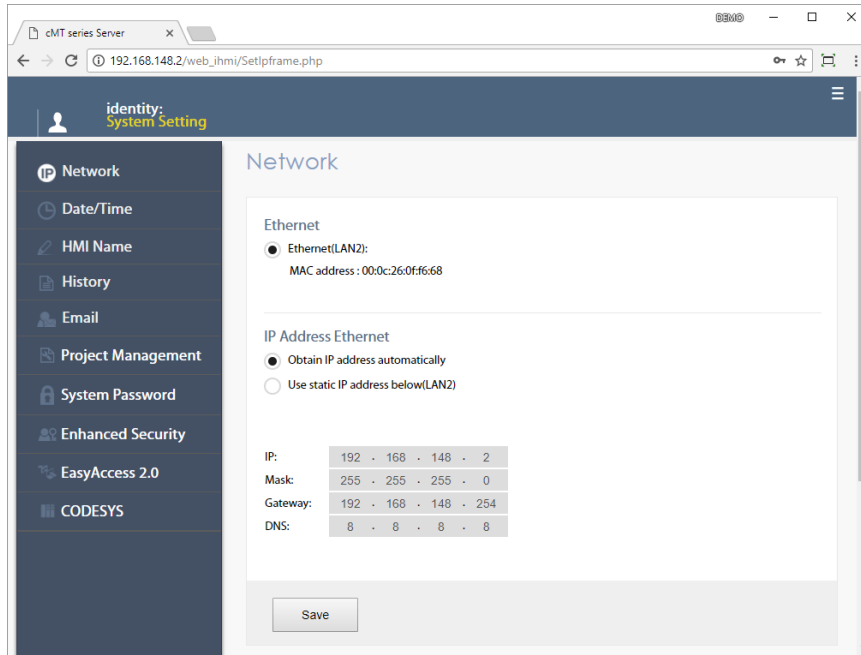


Step 6. Open your web browser and enter your HMI IP address. For example, HMI IP address is 192.168.0.211. Enter “http://192.168.0.211” in the address bar and hit enter. If you use cMT Viewer, you can click the setting icon.

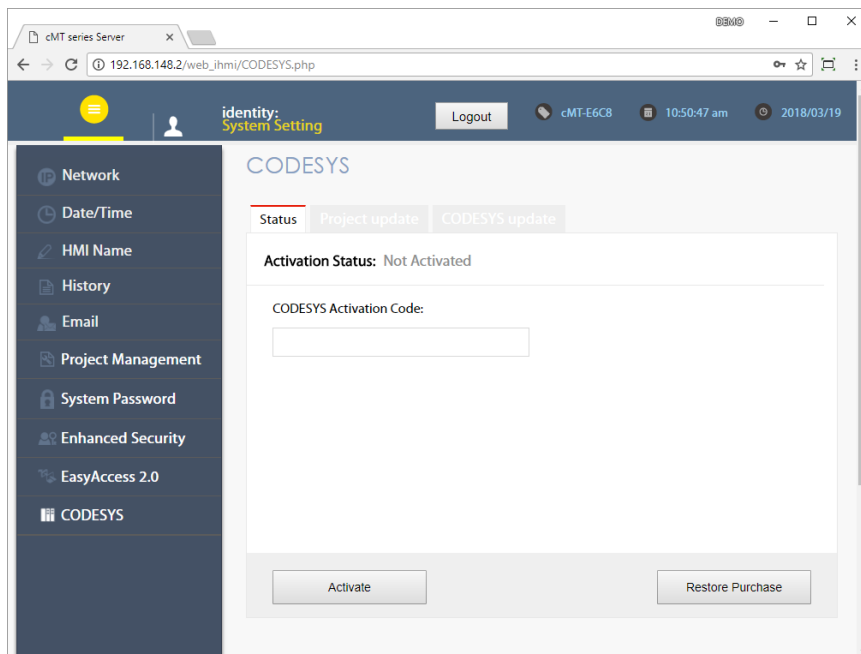


Step 7. Enter system password. (Check installation manual for default password)

Step 8. Go to **Network** tab and make sure the HMI has a working network setting. Gateway and DNS must be set.



Step 9. Go to **CODESYS** tab and enter your activation code from activation card. Click **Activate** to activate and enable CODESYS feature.

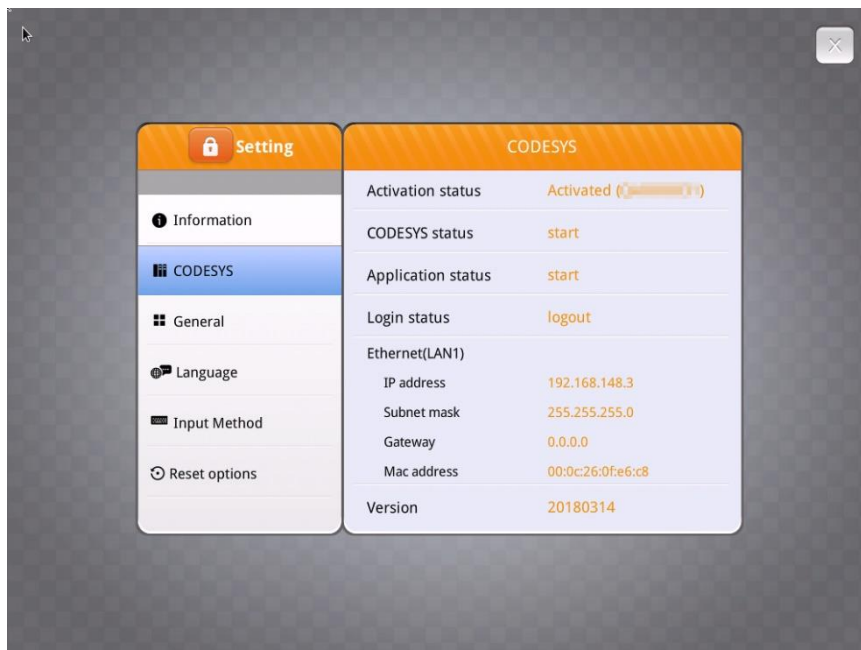


Step 10. If activation succeeds, you will see the message “Please put on license sticker on the back of HMI and then reboot HMI.” If you met problem, please refer to the last section “Activation Error Codes”.

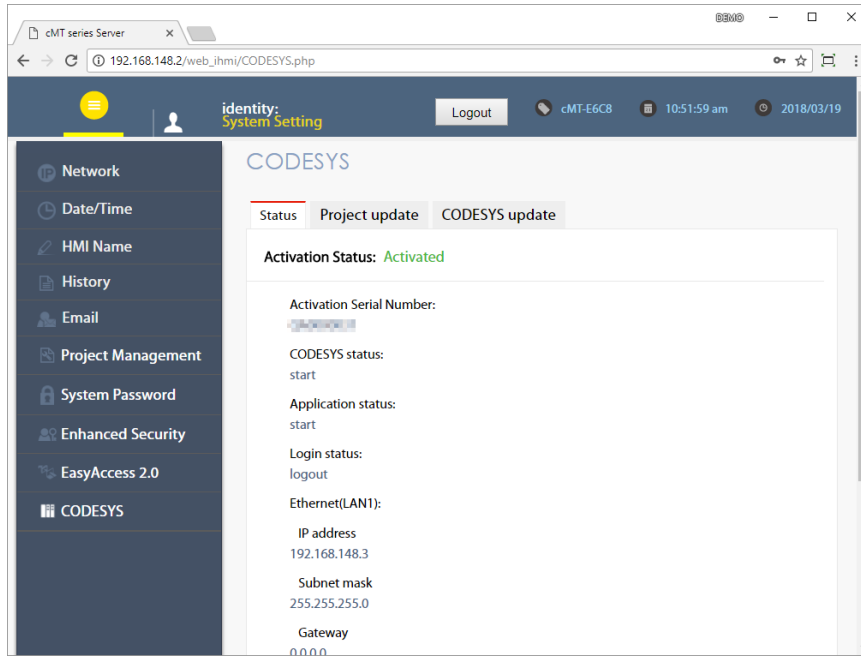
Step 11. The activation is successful. Reboot HMI and you will notice the logo changes.



Step 12. After HMI starts, click start button to call up system information. You will see a new CODESYS tab.



Step 13. Open up HMI web server, you may also check the CODESYS tab. You are able to update CODESYS project and firmware now.



4. Activation Error Codes

- Error code 100: HMI does not have Internet connection or cannot connect to authorization server. Check if HMI has the correct date/time.
- Error code 103: The license has already been used.
- Error code 104: HMI has already been activated. Please try to use restore purchase.
- Error code 107: HMI has not been activated. Please use a correct activation code to activate.

CODESYS® is a trademark of 3S-Smart Software Solutions GmbH.

Other company names, product names, or trademarks in this document are the trademarks or registered trademarks of their respective companies.

This document is subject to change without prior notice.

Copyright© 2018 Weintek Lab., Inc. All rights reserved.