

cMT-iPC15 / cMT-iPC10

User Manual



Table of Contents

1. Overview	1
2. Specification.....	1
3. Dimensions	3
4. LED Indicators	5
5. Lithium Battery	5
6. Entering BIOS	5
7. Installing Windows OS	5
8. Turning ON/OFF the HMI	6
9. Driver	7
10.Touchscreen Calibration	7

Warning

This is Class A Product. In domestic environment this product may cause radio interference in which case the user may be required to take adequate measures.

Other company names, product names, or trademarks in this document are the trademarks or registered trademarks of their respective companies.

This document is subject to change without prior notice.

Copyright© 2019 Weintek Lab., Inc. All rights reserved.

1. Overview

cMT-iPC15 / cMT-iPC10, based on Windows® OS, can connect cMT HMI using cMT Viewer and serves as HMI, and it runs third party applications. By using cMT Launcher dedicatedly designed by Weintek R & D group, it's easy to customize cMT-iPC15 / cMT-iPC10's desktop into smartphone-like UI and manage access control of apps. The shortcut name and icon of the application can be customized and placed in different categories and different pages.

2. Specification

cMT-iPC15

Display	Display	15" TFT
	Resolution	1024 x 768
	Brightness (cd/m ²)	400
	Contrast Ratio	700:1
	Backlight Type	LED
	Backlight Life Time	>50,000 hrs.
	Colors	16.2M
	LCD Viewing Angle (T/B/L/R)	70/70/80/80
Touch Panel	Type	4-wire Resistive Type
	Accuracy	Active Area Length(X)±2%, Width(Y)±2%
Memory	SSD	64 GB
	RAM	4 GB
Processor		Intel Atom™ E3827 processor
I/O Port	SD Card Slot	SD/SDHC/SDXC
	USB Host	USB 2.0 x 2 / USB 3.0 x 1
	Ethernet	10/100/1000 Base-T x 2
	Audio Output	Built-in Mono Speaker Audio Line Out – 3.5 mm jack x 1
RTC		Built-in
Power	Input Power	24±20%VDC
	Power Isolation	Built-in
	Power Consumption	2A@24VDC
	Voltage Resistance	500VAC (1 min.)
	Isolation Resistance	Exceed 50MΩ @ 500VDC
	Vibration Endurance	10 to 25Hz(X,Y,Z direction 2G 30 minutes)
Specification	PCB Coating	Yes
	Enclosure	Aluminum
	Dimensions WxHxD	366 x 293 x 54.2 mm
	Panel Cutout	352 x 279 mm
	Weight	Approx. 2.76 kg
	Mount	Panel mount, VESA mount 75 x 75 mm
Environment	Protection Structure	UL Type 4X (indoor use only) / NEMA4 / IP65 Compliant Front Panel
	Storage Temperature	-20° ~ 70°C (-4° ~ 158°F)
	Operating Temperature	0° ~ 50°C (32° ~ 122°F)
	Relative Humidity	10% ~ 90% (non-condensing)
Certificate	CE	CE marked
	UL	cULus Listed
OS Support		* Windows® 7 / Windows® 8.1 / Windows® 10 IoT Enterprise (EasyLauncher + cMT Viewer)

*License of Windows OS is excluded.

*Windows is a trademark or a registered trademark of Microsoft Corporation in the United States and/or other countries.

*Intel Atom is a trademark of Intel Corporation or its subsidiaries in the U.S. and/or other countries.

cMT-iPC10

Display	Display	9.7" TFT
	Resolution	1024 x 768
	Brightness (cd/m ²)	350
	Contrast Ratio	500:1
	Backlight Type	LED
	Backlight Life Time	>30,000 hrs.
	Colors	262K
	LCD Viewing Angle (T/B/L/R)	60/70/70/70
Touch Panel	Type	4-wire Resistive Type
	Accuracy	Active Area Length(X)±2%, Width(Y)±2%
Memory	SSD	64 GB
	RAM	4 GB
Processor		Intel Atom [™] E3827 processor
I/O Port	SD Card Slot	SD/SDHC/SDXC
	USB Host	USB 2.0 x 2 / USB 3.0 x 1
	Ethernet	10/100/1000 Base-T x 2
	Audio Output	Built-in Mono Speaker Audio Line Out – 3.5 mm jack x 1
RTC		Built-in
Power	Input Power	24±20%VDC
	Power Isolation	Built-in
	Power Consumption	1.5A @24VDC
	Voltage Resistance	500VAC (1 min.)
	Isolation Resistance	Exceed 50MΩ @ 500VDC
	Vibration Endurance	10 to 25Hz (X, Y, Z direction 2G 30 minutes)
Specification	PCB Coating	Yes
	Enclosure	Plastic
	Dimensions WxHxD	260.6 x 203.1 x 44.5 mm
	Panel Cutout	250 x 192 mm
	Weight	Approx. 1.1 kg
	Mount	Panel mount, VESA mount 75 x 75 mm
Environment	Protection Structure	UL Type 4X (indoor use only) / NEMA4 / IP65 Compliant Front Panel
	Storage Temperature	-20° ~ 60°C (-4° ~ 140°F)
	Operating Temperature	0° ~ 50°C (32° ~ 122°F)
	Relative Humidity	10% ~ 90% (non-condensing)
Certificate	CE	CE marked
	UL	cULus Listed
OS Support		* Windows [®] 7 / Windows [®] 8.1 / Windows [®] 10 IoT Enterprise (EasyLauncher + cMT Viewer)

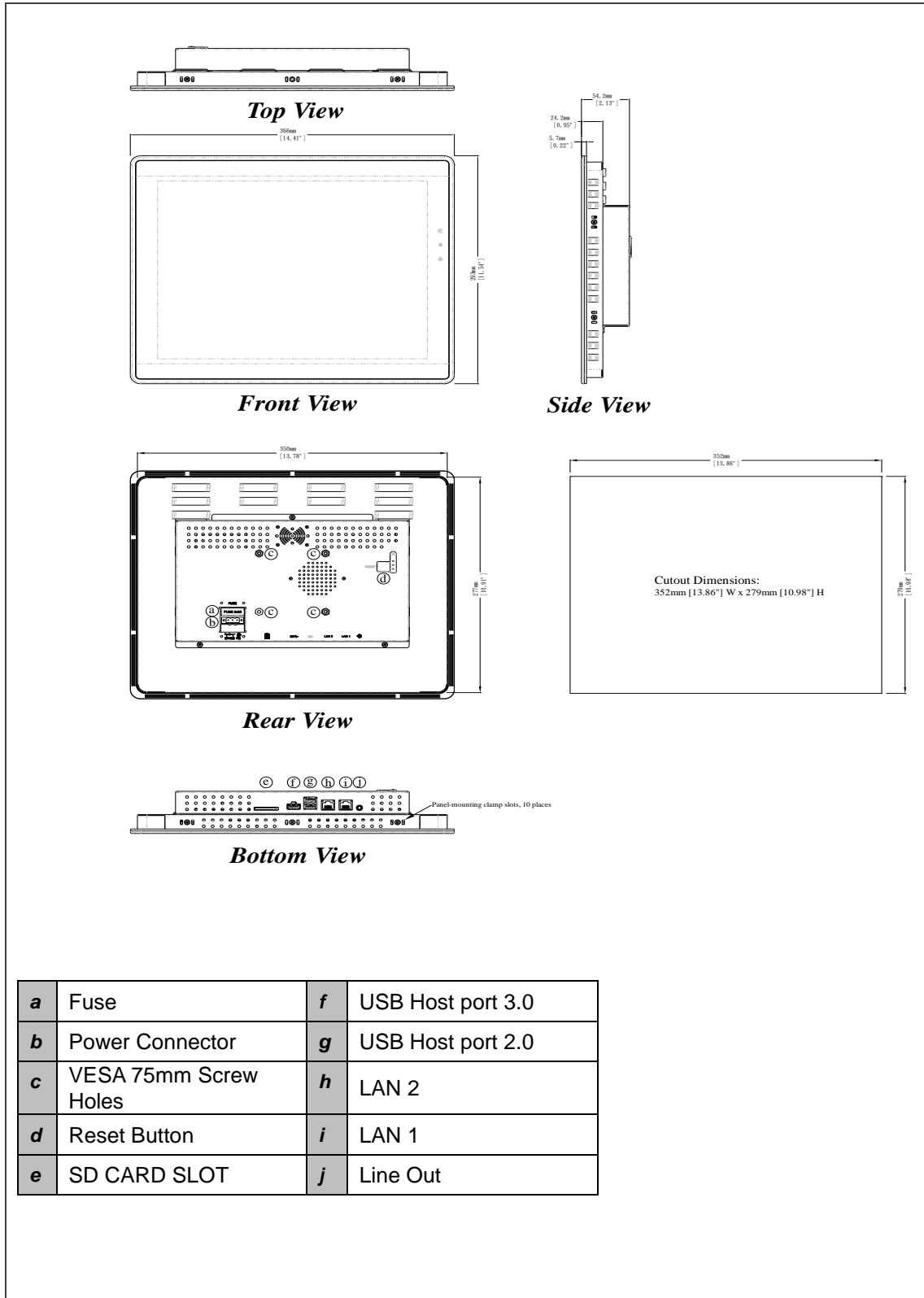
*License of Windows OS is excluded.

*Windows is a trademark or a registered trademark of Microsoft Corporation in the United States and/or other countries.

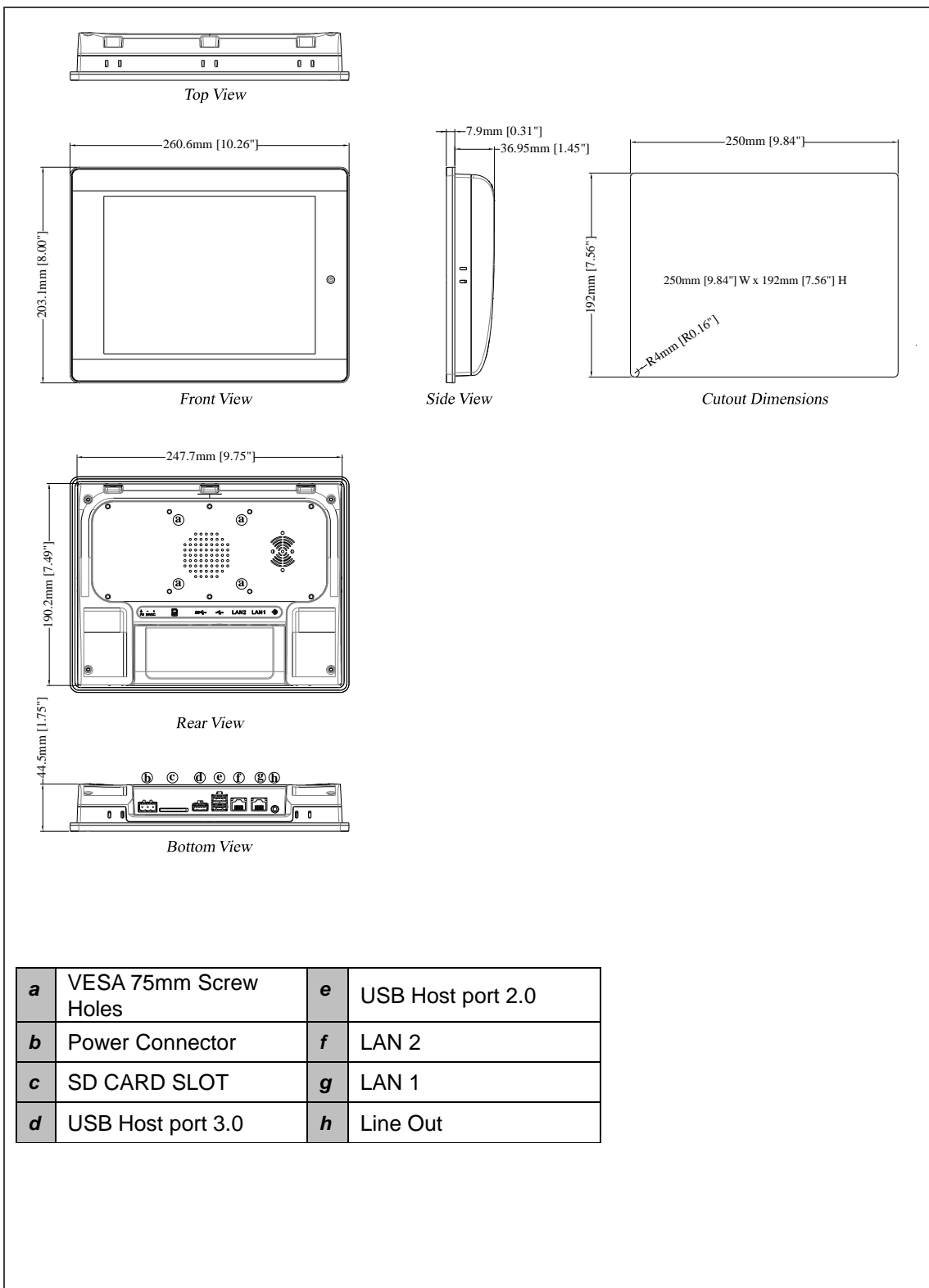
*Intel Atom is a trademark of Intel Corporation or its subsidiaries in the U.S. and/or other countries.

3. Dimensions

cMT-iPC15



cMT-iPC10



4. LED Indicators

cMT-iPC15

The LED indicators indicate:

Orange LED: Power status

Green LED: SSD writing status

Blue LED: Ethernet communication status

cMT-iPC10

The LED indicator indicates:

Orange LED: Power status

5. Lithium Battery

The cMT-iPC15 / cMT-iPC10 require a CR-2032 lithium battery to keep the RTC running.

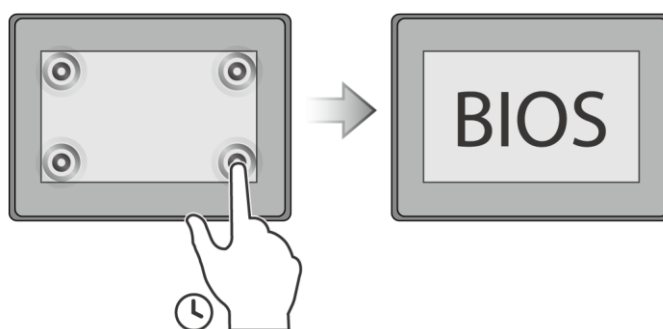
After replacing the battery, please enter BIOS to manually set RTC.

Note: Please use CR-2032 as the replacement battery when battery runs out. Using other types of battery can cause incorrect display of time.

6. Entering BIOS

You can enter BIOS settings by the following two ways:

- Connect a USB keyboard and press F2 key at startup.
- Press and hold on one of the four corners of the screen at startup.



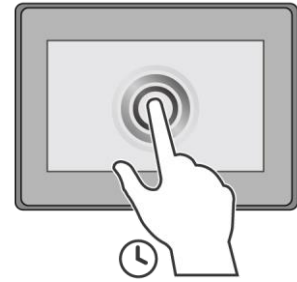
7. Installing Windows OS

1. Read the Windows installation disc by connecting a USB CD-ROM drive.
(Or, burn the Windows ISO image to a USB drive, and then insert the USB drive into HMI.)
2. Press and hold on the center of the screen and then select the device.

(Or, connect a USB keyboard, and press F5 key at startup.)

Note:

1. Since cMT-iPC15 / cMT-iPC10 does not offer Windows recovery disc, it is highly recommended to back up the system after installing Windows.



8. Turning ON/OFF the HMI

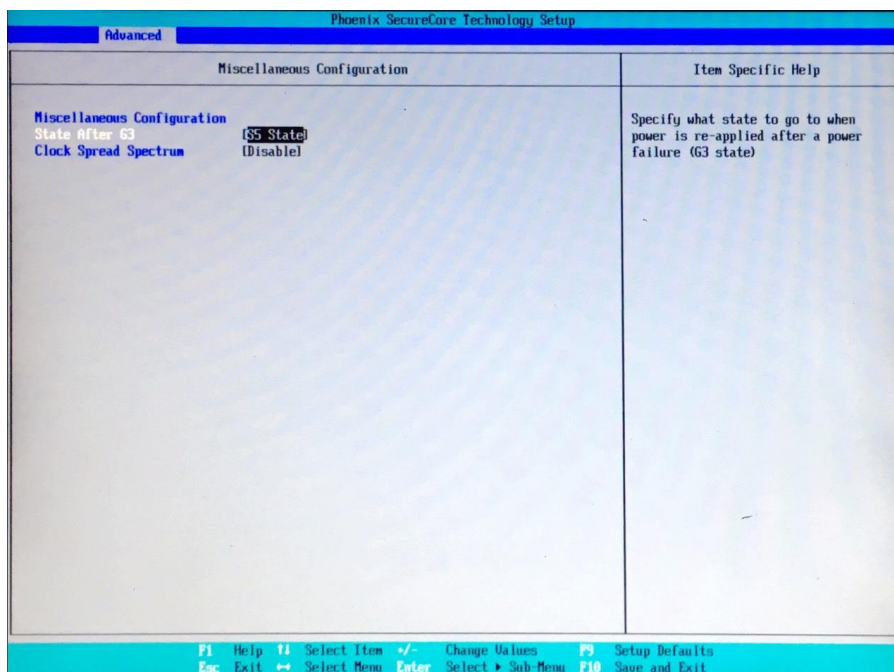
ON:

To turn on the HMI, go to BIOS and set whether to automatically turn on, or press the power button to turn on, when the HMI is connected to power supply.

Go to BIOS \ Advanced \ South Cluster Configuration \ Miscellaneous Configuration \ State After G3:

S0 State: Automatically turn on when connected to power supply.

S5 State: Press the power button to turn on when connected to power supply.



OFF:

To turn off the HMI, you can either turn off in Windows, or set the function of the power button in Windows Control Panel \ System and Security \ Power Options \ Change what the power buttons do, and press the power button when HMI is ON.

 **Unplugging power cord directly can cause stop error and lead to data loss.**

9. Driver

After installing Windows OS, install the required software / hardware drivers, in the same order as listed in the following link.

Download Link:

cMT-iPC15:

http://www.weitek.com/Download/cMT/cMT_iPC15/driver/cMT_iPC15_driver.htm

cMT-iPC10:

http://www.weitek.com/Download/cMT/cMT_iPC10/driver/cMT_iPC10_driver.htm

10. Touchscreen Calibration

To do touchscreen calibration, run HIDEGalaxTouch Tool.

To do an advanced calibration, go to [Advanced] \ [Linearization], and choose from 9 Points or 25 Points Calibration.

