

### 1 Installation and Startup Guide

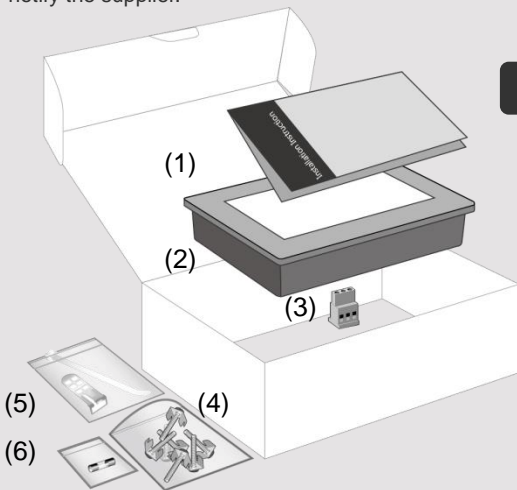
This document covers the installation of MT8073iE Series HMI, for the detailed specifications and operation, please refer to Brochure and EasyBuilder Pro User Manual.

#### Install Environment:

NEMA Rating	The HMI product is NEMA 4 rated (Indoor Only).
Electrical Environment	The HMI product has been tested to conform to European CE requirements. This means that the circuitry is designed to resist the effects of electrical noise. This does not guarantee noise immunity in severe cases. Proper wire routing and grounding will insure proper operation.
Environmental Considerations	<ol style="list-style-type: none"> <li>(1) Make sure that the displays are installed correctly and that the operating limits are followed. Avoid installing units in environments where severe mechanical vibration or shocks are present.</li> <li>(2) The HMI product is certified in accordance with ATEX zone 2/22 categories 3 G/D. The unit has to be installed in an additional enclosure ensuring a minimal protection level for 3G/D equipment. The enclosure equipped with the unit has to be certified and shouldn't be opened when an explosive atmosphere is present.</li> <li>(3) Do not install the unit where acid gas, such as SO<sub>2</sub> exists.</li> <li>(4) This device should be mounted in the vertical position and for use on the flat surface enclosure.</li> <li>(5) Conform to UL508 (ISBN 0-7629-0404-6) machine safety for use in Pollution Degree 2 Environment.</li> </ol>

### 2 Unpacking the Unit

Unpack and check the delivery. If damage is found, notify the supplier.



(1) Installation Instruction, 2-sided A4 \*1

(2) Human Machine Interface \*1

(3) Power Connector \*1

(4) Brackets & Screws \*1 pack

(5) USB Stick Clamp & Tying Strap \*1

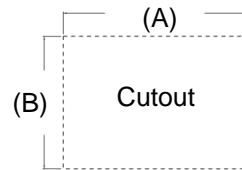
(6) Fuse 1.25A/250V 5\*20mm \*1

#### NOTE:

Place the operator panel on a stable surface during installation. Dropping it or letting it fall may cause damage.

### 3 Installation Instructions

Secure the operator panel in position, and screws. Screw Torque: 2.6 ~ 3.9 N·m (from being deformed.)

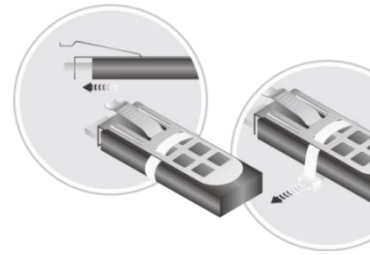


Type	A(mm)	B(mm)
MT8073iE	192	138

#### USB Stick Clamp Usage

Combining the USB Stick with the clamp with HMI when strong vibration is present.

1. Insert the USB connector to the clamp.
2. Press the spring and insert the USB stick.



### 4 Power Connections

#### NOTE:

1. Connect positive DC line to the '+' ground to the '-' terminal.
2. When using a USB cable to download, do not connect HMI with PLC and PC to prevent potential difference from destroying HMI and PC.

### 5 System Settings

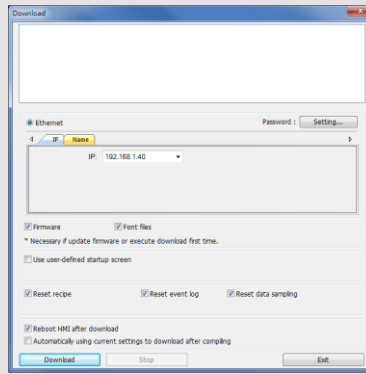
When HMI is powered up and displays the system setting button in the lower-right corner (Default System Password: 111111). Go to the Network tab, you may choose to designate your own IP. MT8073iE has two 10/100/1000 Base-T Ethernet ports. The default IP addresses are:  
 LAN 1: DHCP  
 LAN 2: 192.168.100.1

## 6 EasyBuilder Pro Software Settings

Launch EasyBuilder Pro software, select your project file, press F7 shortcut key to open the download dialog box:

Select Ethernet > IP tab > Enter your HMI IP  
> Click Download to download this project file to HMI.

( Please refer to EasyBuilder Pro User Manual for software operation details )



## 7 Communication Connections

**NOTE:** 1. COM2 and COM3 [RS485] 2W support MPI 187.5K, please use one at one time.  
2. Only Tx & Rx (no RTS/CTS) may be used for COM1 RS-232 when COM3 RS-232 is also used.

**COM1 / COM3 [RS232] 9 Pin, Male, D-sub**

1 2 3 4 5  
6 7 8 9

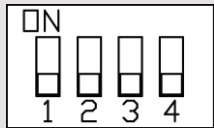
PIN#	COM1 [RS232]	COM3 [RS232]
1		
2	RxD	
3	TxD	
4		
5	GND	
6		
7	RTS	TxD
8	CTS	RxD
9	GND	

**COM2 / COM3 [RS485] 9 Pin, Female, D-sub**

5 4 3 2 1  
9 8 7 6

PIN#	COM2 [RS485]		COM3 [RS485]
	2w	4w	
1	Data-	Rx-	
2	Data+	Rx+	
3		Tx-	
4		Tx+	
5	GND		
6			Data-
7			
8			
9			Data+

## 8 DIP SW Settings



SW1	SW2	SW3	SW4	Mode
ON	OFF	OFF	OFF	Touch Screen Calibration Mode
OFF	ON	OFF	OFF	Hide HMI System Setting Bar
OFF	OFF	ON	OFF	Boot Loader Mode
OFF	OFF	OFF	ON	Not supported
OFF	OFF	OFF	OFF	Normal

Another way to enter touch screen calibration mode is: Press and hold anywhere on the screen for more than 2 seconds when HMI starts.

### CAUTION

**NOTE:** Make sure you are installing the unit correctly.

- Power** The unit can be powered up without the most controller DC system. Switching power supply.
- Fusing Requirements** If the display does not power up, prevent damage if the power is removed and try to power up again.
- High Voltage** An Internal fuse will prevent the unit from being connected to high voltage sources should the unit be damaged.
- Emergency Stop** A Hard-wired EMERGENCY STOP button is recommended for safety.
- Supply Voltage Condition** Do not power the unit with a power supply. Note: The power supply must be able to power the unit.
- Wire Routing**
  - a. Power wire length should be matched.
  - b. Please use twisted pair for signal wires.
  - c. If wiring is to be exposed, it should be protected.
  - d. Keep AC, high energy wires away from signal wires.
  - e. Add a resistor and a capacitor to the power supply and the frame ground.

### DANGER

- Hardware Considerations** The system designer should create an unsafe condition during equipment start-up, which may be a safety hazard exists. If you use any program, please refer to your particular application manual for the recommended in NE.
- Programming Considerations** To conform with ICS, please ensure that all writable registers are initialized in the program, with an initial value.

### Limited Warranty

This product is limited warranted against manufacturing defects. The proven defective product will be replaced or repaired. This warranty shall not cover any product under the following conditions:  
(a) Out of warranty period which is 12 months from the date of purchase.  
(b) Damage caused by Force Majeure, accident, fire, flood, etc.  
(c) Product has been repaired or taken apart by unauthorized personnel.  
(d) Products whose identification markings are illegible or missing.