

MT8050iE series

Installation Instruction

1 Installation and Startup Guide

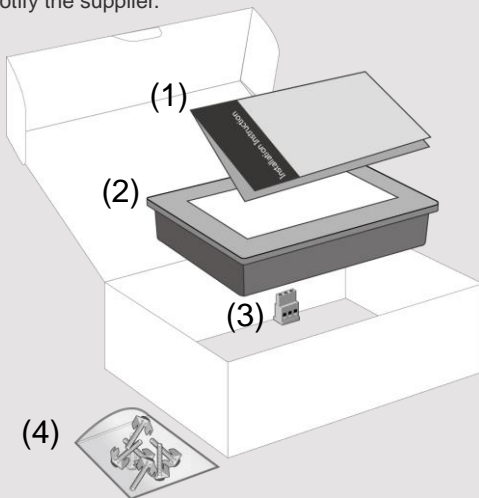
This document covers the installation of MT8050iE Series HMI, for the detailed specifications and operation, please refer to Brochure and EasyBuilder Pro User Manual.

Install Environment:

NEMA Rating	MT8050iE Series HMI is NEMA 4 rated (Indoor Only).
Electrical Environment	MT8050iE Series has been tested to conform to European CE requirements. This means that the circuitry is designed to resist the effects of electrical noise. This does not guarantee noise immunity in severe cases. Proper wire routing and grounding will insure proper operation.
Environmental Considerations	(1) Make sure that the displays are installed correctly and that the operating limits are followed. Avoid installing units in environments where severe mechanical vibration or shocks are present. (2) Do not operate the unit in areas subject to explosion hazards due to flammable gases, vapors or dusts. (3) Do not install the unit where acid gas, such as SO ₂ exists. (4) This device should be mounted in the vertical position and for use on the flat surface enclosure. (5) Conform to UL508 (ISBN 0-7629-0404-6) machine safety for use in Pollution Degree 2 Environment.

2 Unpacking the Unit

Unpack and check the delivery. If damage is found, notify the supplier.



NOTE:

Place the operator panel on a stable surface during installation. Dropping it or letting it fall may cause damage.

(1) Installation Instruction, 2-sided A4 *1

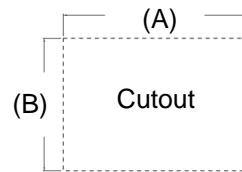
(2) Human Machine Interface *1

(3) Power Connector *1

(4) Brackets & Screws *1 pack

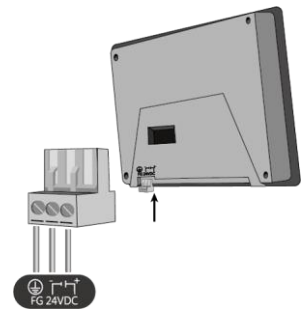
3 Installation Instructions

Secure the operator panel in position, and screws. Screw Torque: 2.6 ~ 3.9 N·m (from being deformed.)



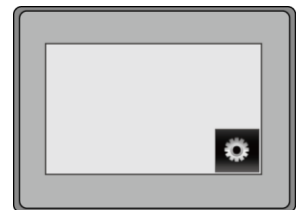
Type	A(mm)	B(mm)
MT8050iE	119	93

4 Power Connections



5 System Settings

When HMI is powered up and displays, click the system setting button. (Default System Password: 111111) It is necessary to connect the HMI to your network through a RJ-45 cable.

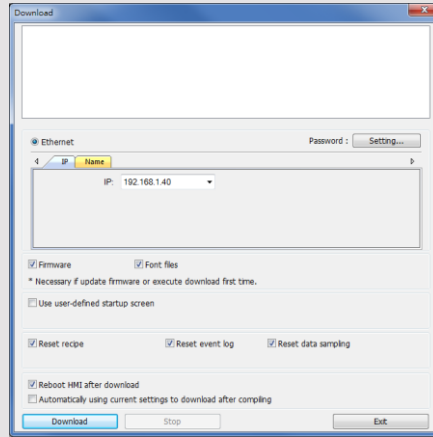


6 EasyBuilder Pro Software Settings

Launch EasyBuilder Pro software, select your project file, press F7 shortcut key to open the download dialog box:

Select Ethernet > IP tab > Enter your HMI IP
> Click Download to download this project file to HMI.

(Please refer to EasyBuilder Pro User Manual for software operation details)



7 Communication Connections

NOTE: COM1 and COM3 [RS485] 2W support MPI 187.5K, please use one at one time.

9 Pin, Male, D-sub
COM1 [RS232]
COM1 [RS485]
COM3 [RS485]

1 2 3 4 5
6 7 8 9

PIN#	COM1 [RS485]		COM1 [RS232]	COM3 [RS485]
	4 wire	2 wire		
1	Rx-	Data-		
2	Rx+	Data+		
3	Tx-			
4	TX+			
5	GND			
6			TxD	
7				Data-
8				Data+
9			RxD	

8 Calibration Mode

1. When HMI is powered up and displays image, press the calibration mode button.
2. Click [Yes] in the "Continue to touch panel calibration?" dialog box.
3. A "+" sign appears on the screen, touch the center of the sign, after all signs are touched, "+" sign disappears. At this point the calibration is finished, and it returns to the project.

Another way to enter touch screen calibration mode is: Press and hold anywhere on the screen for more than 2 seconds when HMI starts.



CAUTION

NOTE: Make sure installing the unit.

- Power** The unit can be powered by most controller DC system switching power supply. The
- Fusing Requirements** If the display does not connect, prevent damage if the polarity and try to power up again.
- High Voltage** An Internal fuse will prevent high voltage sources should provide
- Emergency Stop** A Hard-wired EMERGENCY Safety Recommendations
- Supply Voltage Condition** Do not power the unit and power supply. Note: The 2 power the unit.
- Wire Routing**
 - a. Power wire length should
 - b. Please use twisted pair matching.
 - c. If wiring is to be exposed
 - d. Keep AC, high energy
 - e. Add a resistor and capacitor supply and the frame. Typical values to use

DANGER

- Hardware Considerations** The system designer should create an unsafe condition equipment start-up, which If you use any program safety hazard exists and your particular application programmable control recommended in NEMA
- Programming Considerations** To conform with ICS Safety that all writable registers the program, with an out

Limited Warranty

This product is limited warranted against The proven defective product will be This warranty shall not cover any product
(a) Out of warranty period which is 12 months
(b) Damage caused by Force Majeure, accident
(c) Product has been repaired or taken apart
(d) Products whose identification markings are