

USB Device

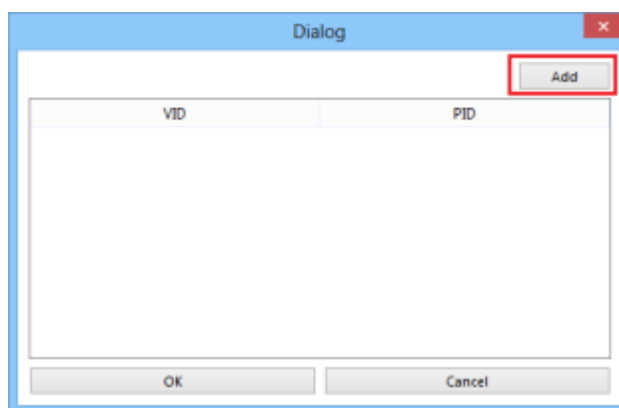
Devices that support bulk and interrupt communication modes

HMI Settings:

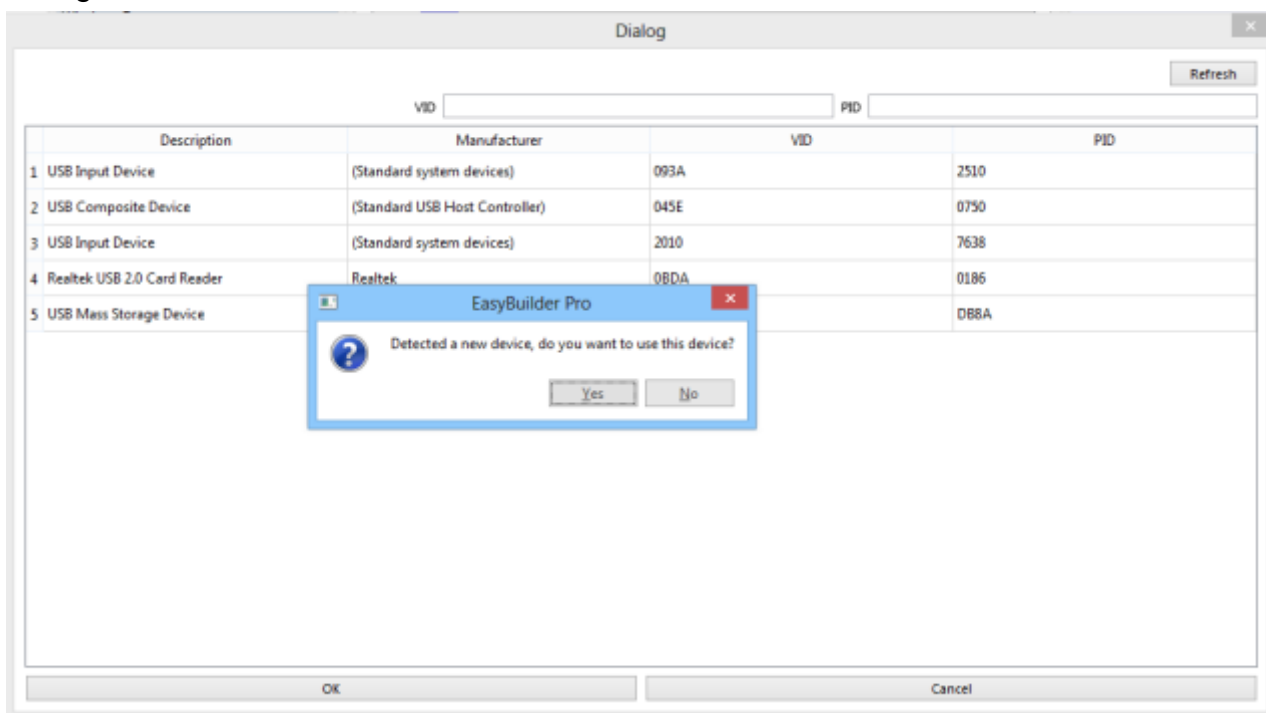
Parameters	Recommended	Options	Notes
PLC type	USB Device		
PLC I/F	USB		

Tag Manager:

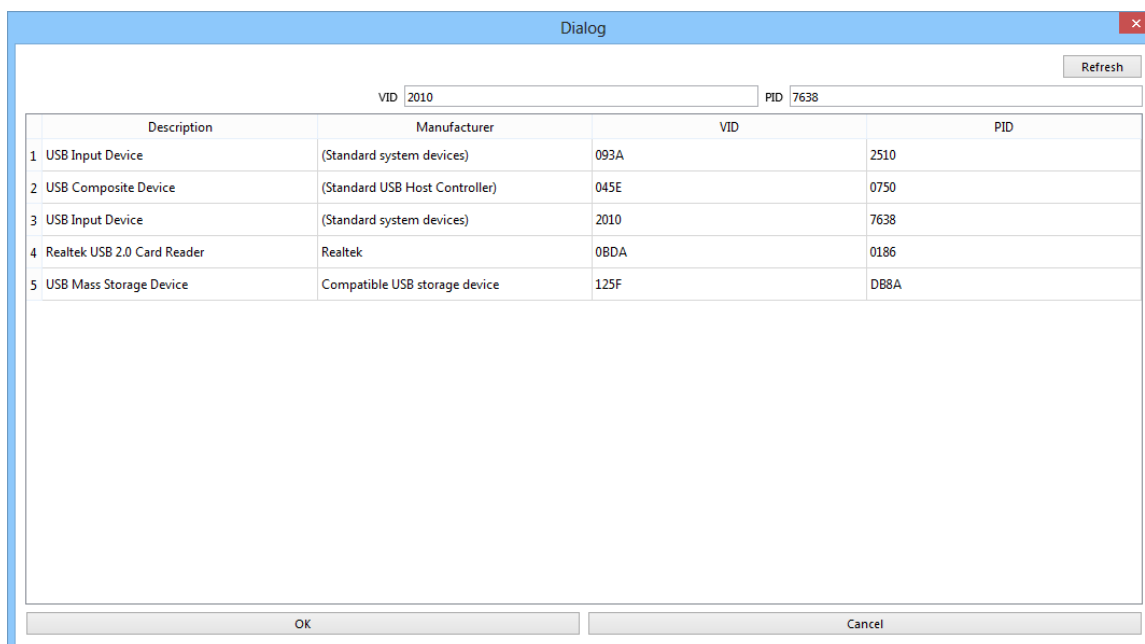
1. Click **[Add]** to join the device.



2. Connect the USB Device to the PC and it will automatically detect and pop up a dialogue window.

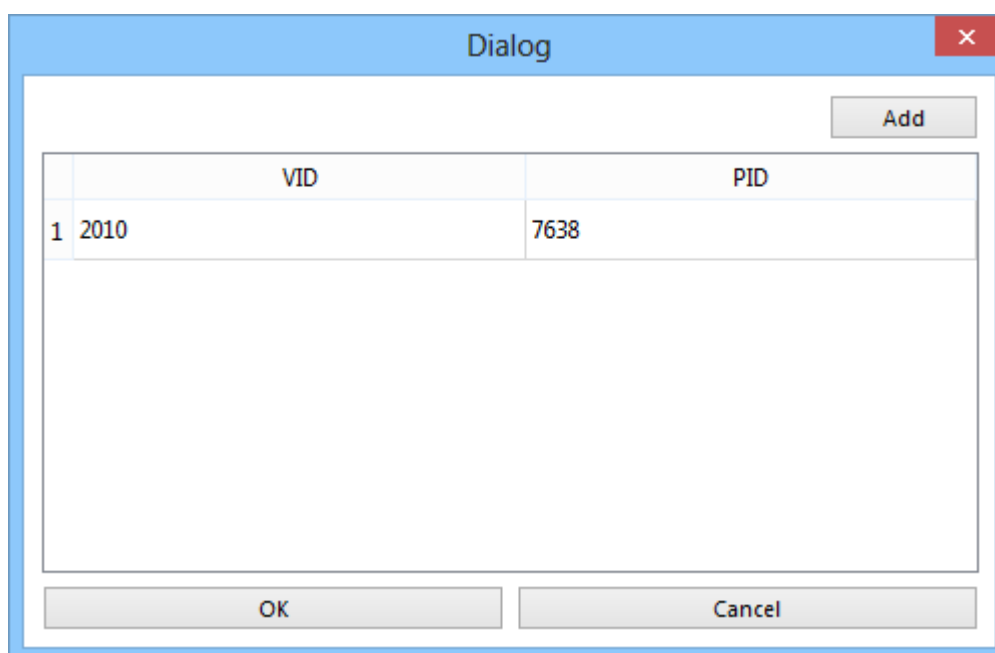


3. After selecting **[Yes]** to join the device, it will automatically fill in the **[VID]** and **[PID]** of the device, click OK



	Description	Manufacturer	VID	PID
1	USB Input Device	(Standard system devices)	093A	2510
2	USB Composite Device	(Standard USB Host Controller)	045E	0750
3	USB Input Device	(Standard system devices)	2010	7638
4	Realtek USB 2.0 Card Reader	Realtek	0BDA	0186
5	USB Mass Storage Device	Compatible USB storage device	125F	DB8A

4. The device will appear in the list, press **[OK]** to complete adding the device



	VID	PID
1	2010	7638


DriverCapability:

Bit	Describe
Bit 0	The device supports the basic functions of the USB driver.
Bit 1	Device supports hot plug detection.

Status:

Status	Describe
0	The device is ready
1	The device is offline or cannot be found in the list.
2	Device hot-swap
3	Device hot-swap insertion
4	The device could not be initialized successfully

Request_result: communication request status.

Status	Describe
0	Read successfully
1	Illegal request
2	Request failed
3	Waiting for device to respond
4	Request device response
5	Request timed out

Other Address Description:

Status	Describe
Time_interval	Read time period (unit: millisecond)
Last_packaged_timestamp	Timestamp of last data read
Last_packaged_length	The length of the last data read