

## Project Protection [Project Key]

## Table of Contents

1. Overview and Operation
2. Setting Up the Screen
3. Objects

## 1. Overview and Operation

User's project can be restrained and executed on specific HMI (only support i series HMI). Project key can be set in EB8000 system parameter settings.

Please refer to the picture below.

Project protection (i series only)

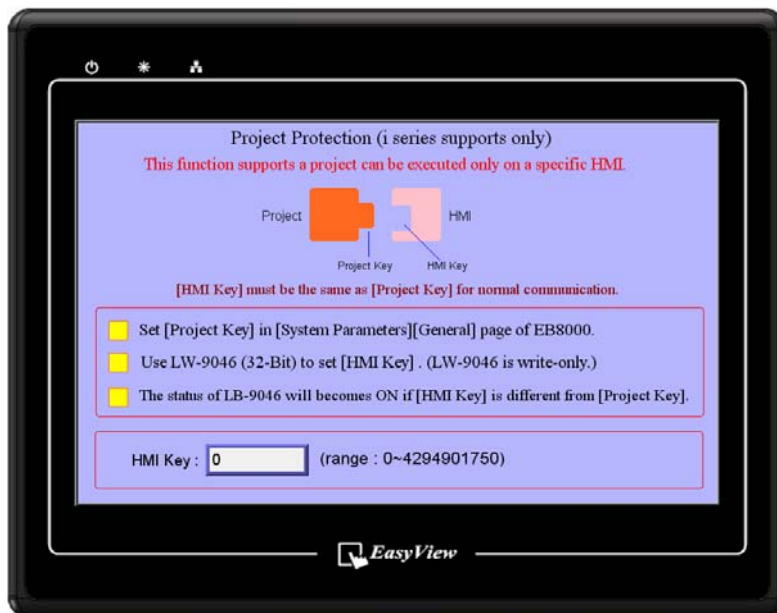
☒ Enable Project key : 111111 (range : 0 ~ 4294901750)

\* If this key is different from HMI key, the project won't be executed normally.  
\* Use LW9046~9047 to change HMI key.

User can use LW9046~LW9047 (32-bit) to set the [HMI key]. The value can not be read or written in this two word registers even with remote HMI.

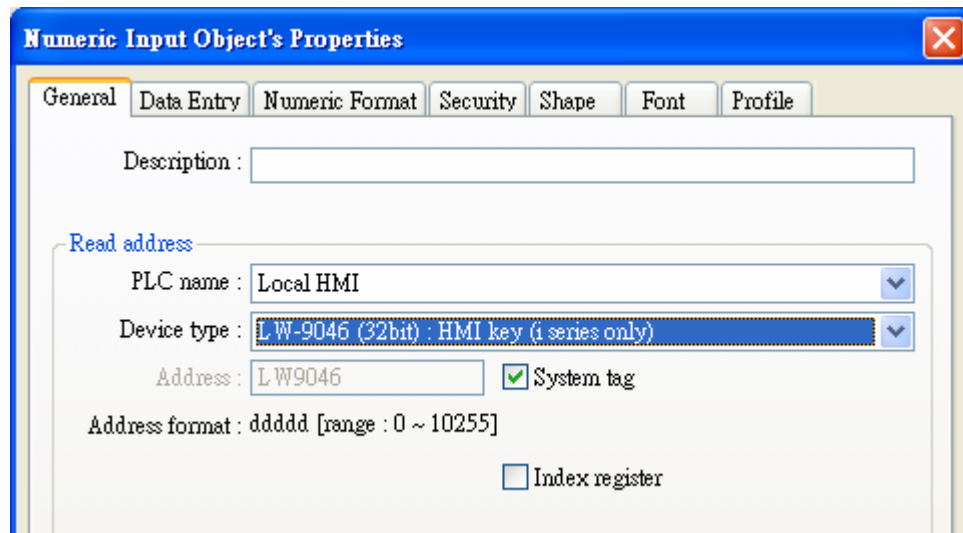
While using this function, users can set the password (project key password range: 0~4294901750), and the XOB file can only be executed on specific HMI when the [Project Key] is the same as [HMI key].

If the [Project Key] is different from the [HMI key], the state of system reserved LB9046 would be ON. It needs to reboot HMI every time while setting [HMI key].

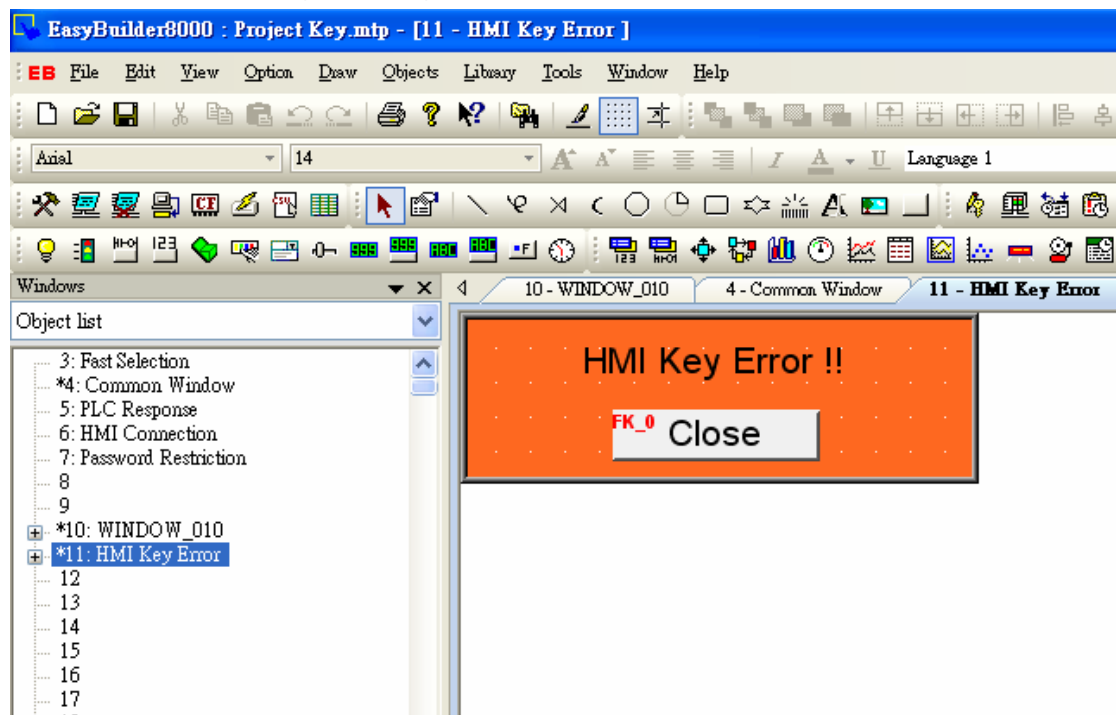


## 2. Setting Up the Screen

1. Create a Numeric Input object using system tag LW9046 in window 10.



2. Set up a warning message in window 11.



3. Create a Direct Window Object to read system tag LB9046 in window 10. And set the object attribute as picture below.

**Direct Window Object's Properties**

General Profile

Description :

**1.** Read address

PLC name : Local HMI

Device type : LB-9046 : project key is different from HMI key (when ON)

Address : LB9046 ☒ System tag

Address format : ddddd [range : 0 ~ 11999]

☐ Index register

**2.** Attribute

Style : No title bar

Window No. : 11. HMI Key Error

4. When the [Project Key] is different from the [HMI key], the state of system reserved LB9046 would be ON.



### 3. Object

The objects used in this demo project are listed below.

Object	ID	Detail
Numeric Input	NE0	System tag LW9046
Direct Window	WC0	System tag LB9046
Function Key	FK0	Close window (in window 11)