

WEINTEK LABS., INC.

iR-DM16 iR-COP iR-ETN

Demo Project

Contents

| | |
|---------------------------------|---|
| 1. Overview and Operation | 1 |
| 2. Setting up the Screen | 2 |
| 3. Executing CODESYS | 5 |

Other company names, product names, or trademarks in this document are the trademarks or registered trademarks of their respective companies.

This document is subject to change without notice.

Copyright© 2018 Weintek Labs., INC. All rights reserved.

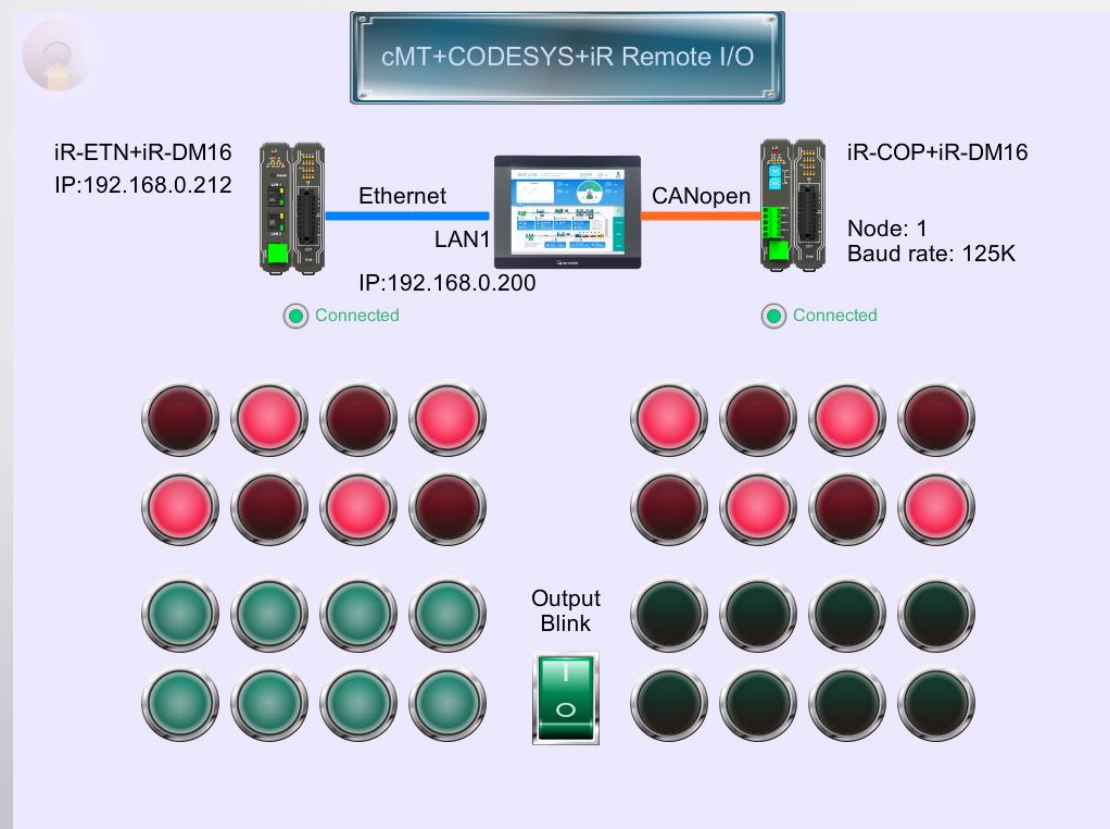
1. Overview and Operation

Overview

After enabling CODESYS on cMT3090, CODESYS can connect to iR-ETN via Ethernet, or connect to iR-COP via CANopen, and then read/write the status of I/O module iR-DM16.

Operation

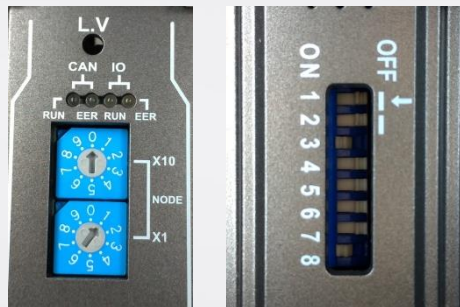
Download the project to cMT3090 and CODESYS. Please note that CODESYS project must be set to RUN mode. Either iR-ETN or iR-COP or both can be connected at a time.



2. Setting up the Screen

Step 1. Set the ID and Baud Rate for iR-COP. ID=01, Baud Rate = 250kbps.

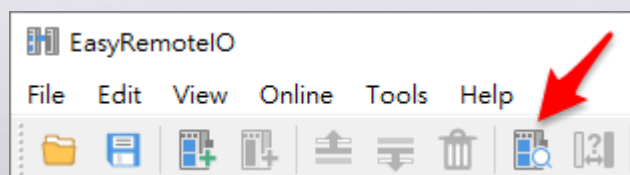
Flip DIP SW 8 to ON position to use Terminator.



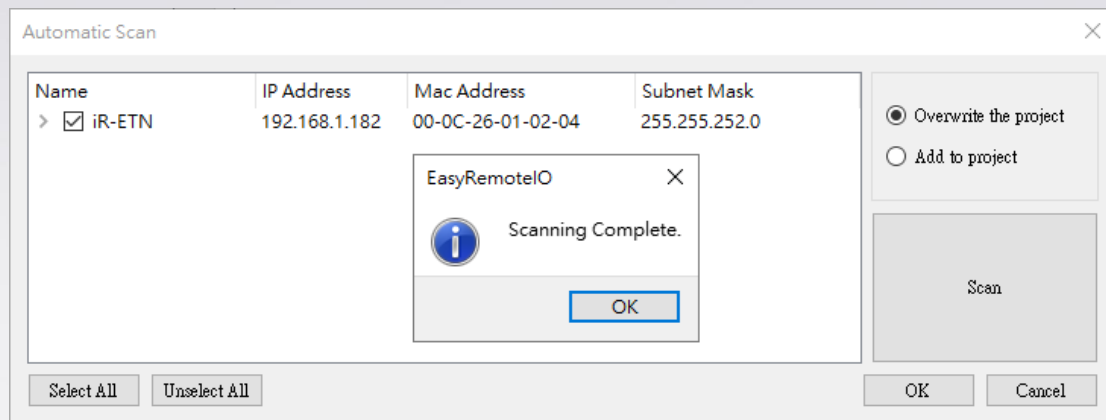
Baud Rate Settings (DIP Switch)

| SW4 | SW3 | SW2 | SW1 | Baud Rate |
|-------|-------------------------|-----|-----|-----------|
| 0 | 0 | 0 | 0 | Auto rate |
| 0 | 0 | 0 | 1 | 1Mbps |
| 0 | 0 | 1 | 0 | 800Kbps |
| 0 | 0 | 1 | 1 | 500Kbps |
| 0 | 1 | 0 | 0 | 250Kbps |
| 0 | 1 | 0 | 1 | 125Kbps |
| 0 | 1 | 1 | 0 | 100Kbps |
| 0 | 1 | 1 | 1 | 50Kbps |
| SW5-7 | Reserved | | | |
| SW8 | CAN Bus 120Ω Terminator | | | |

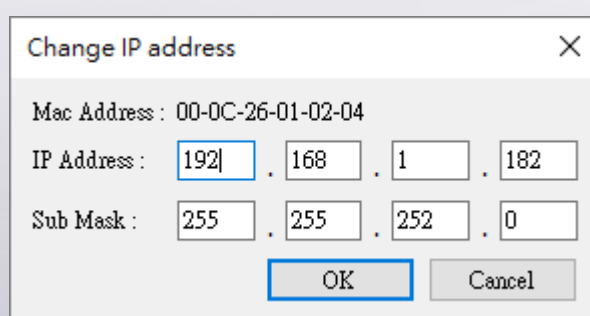
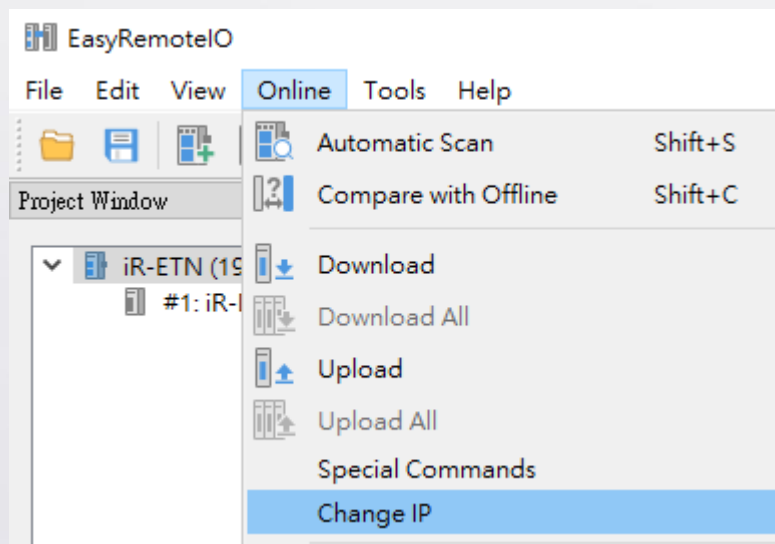
Step 2. Configure iR-ETN, run EasyRemotIO, and then click [Automatic Scan].



In Automatic Scan window, click [Scan] button, all the iR-ETN in the same local network will be shown. Select an iR-ETN to configure and then click OK.

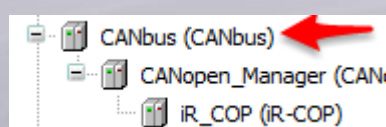


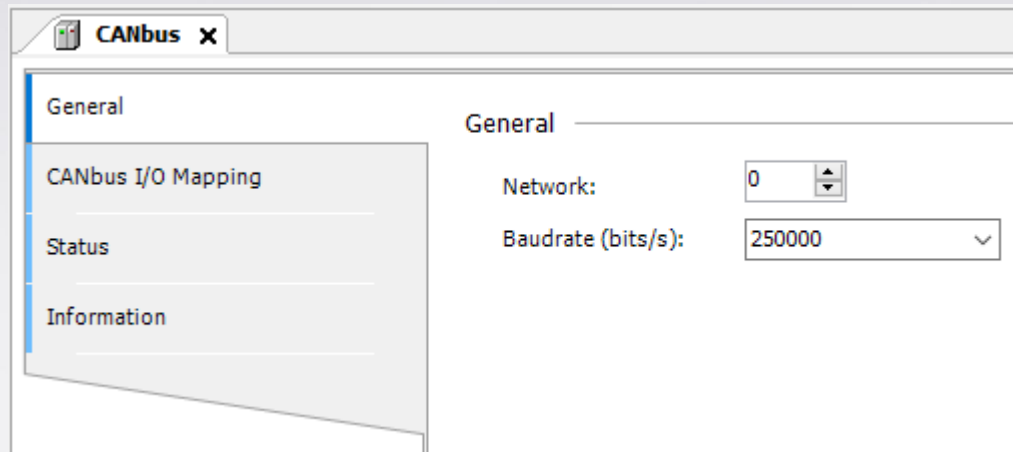
To change iR-ETN's IP address, find [Online] in the menu, select [Change IP], and then enter the new IP address.



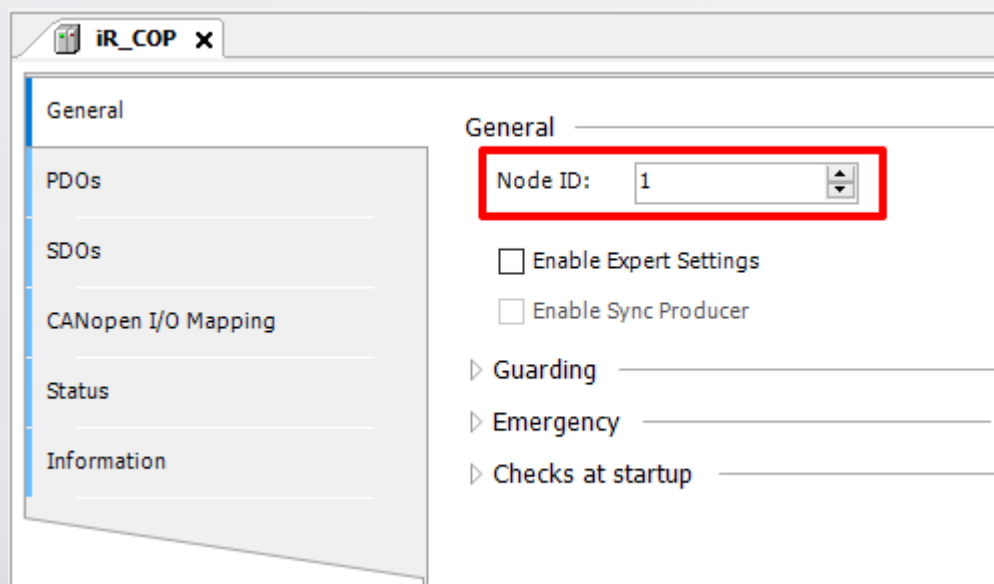
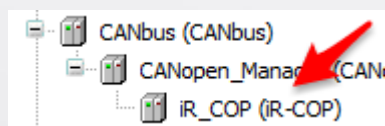
Step 3. Configure CODESYS.

In CANbus(CANbus) dialog box, set Baud Rate to 250kbps.





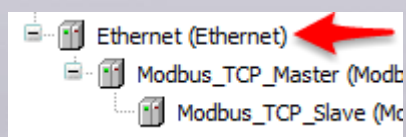
In iR-COP(iR-COP) dialog box, set CANbus Node ID.

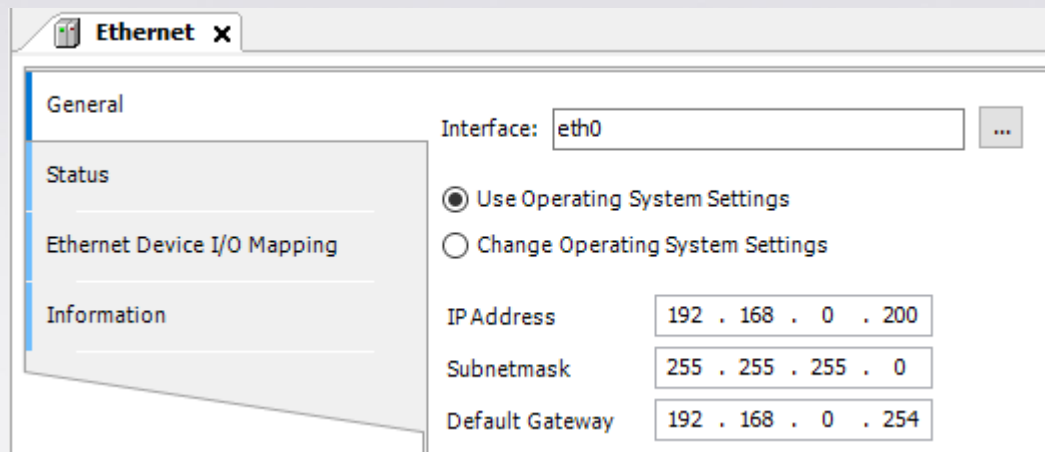


In Ethernet(Ethernet) dialog box, set cMT CODESYS Ethernet port's IP address.

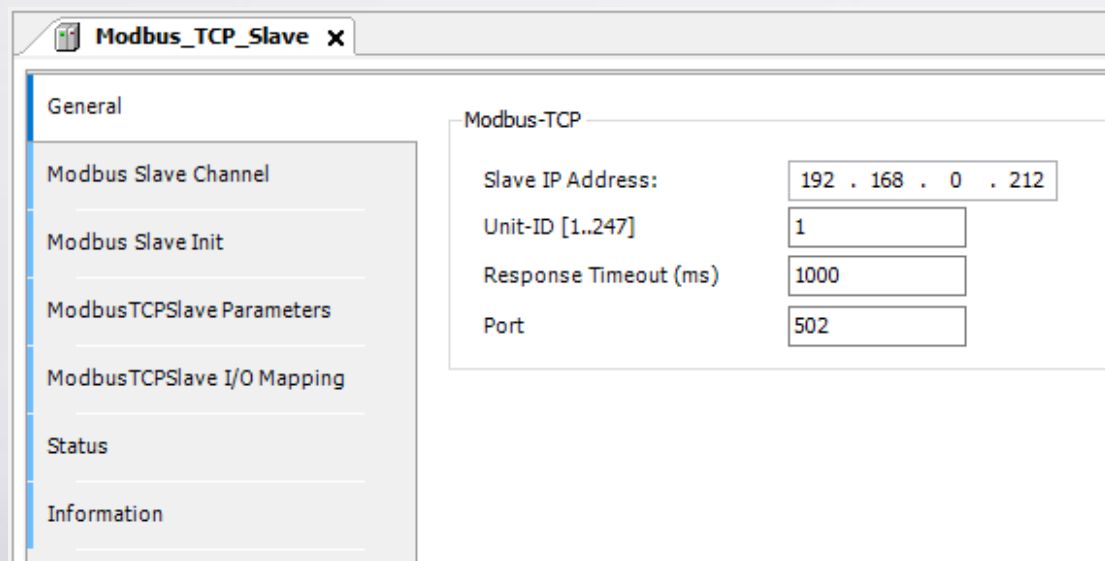
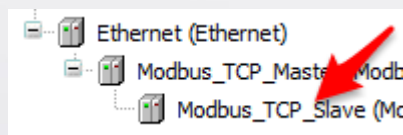
Select [Use Operating System Settings] to use the current IP of the cMT model.

Select [Change Operating System Settings] to use a specified IP.



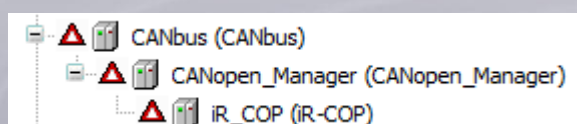


In Modbus_TCP_Slave dialog box, set the IP address of the iR-ETN to be connected.

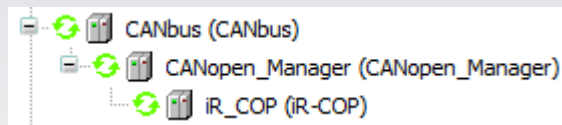


3. Executing CODESYS

When executing CODESYS and red triangles are shown near CANbus, please check the connection cable and the settings.



When communication is OK, green circles are shown as below.



When a triangle is shown near Modbus_TCP_Slave, please check iR-ETN's IP setting and check whether the Ethernet cable is properly connected to cMT model's Ethernet port (LAN1).

