

eGrabIt - eFive Connection Tool



Contents

This application guide explains how to use the eGrabIt software to establish a VPN client connection between your PC and the eFive VPN server. It also covers other connection types like direct VPN connection to eWONs, dial-up connections to eWONs and connections to eSync VPN servers.

1. What is eGrabit for ?	3
2. Hardware and Software Requirements	3
2.1 Hardware requirements	3
2.2 Software requirements	3
3. Related documents	3
4. eGrabit Installation	4
4.1 Installation	4
4.2 Program Location	4
5. How Does it Work?	4
6. Add and Configure an eFive VPN Server	5
6.1 Step 1 - Add an eFive VPN Server	5
6.2 Step 2 - Connect to an eFive VPN server	9
6.3 Step 3 - Disconnect an eFive VPN server	10
6.4 Editing the Properties of an eFive	10
6.5 Deleting an eFive	11
6.6 Export & Import the Configuration	11
6.6.1 Export the current config file	11
6.6.2 Import a config file	12
6.7 View logs	12
7. Add and Configure Other Devices	13
7.1 eWON VPN Connection	14
7.2 Dial-Up Connection	17
7.3 eSync VPN Server	19
7.3.1 Creation method selection	19
7.3.2 Based upon the import of a User Certificate file	19
7.3.3 Manual creation	20
Revision history	24

1. What is eGabit for ?

eGabit is a VPN client connection application for connecting to eWON's eFive VPN appliances. eGabit can also manage direct VPN connection to eWONs, dial-up connections to eWONs and connections to eSync VPN servers.

2. Hardware and Software Requirements

2.1 Hardware requirements

In order to follow this guide you will need:

- 1 eFive 25 or 100 configured with Internet access
- 1 PC with Internet access

2.2 Software requirements

- Download the eGabit package from <http://support.ewon.biz>.

3. Related documents

IG-012-0-EN-(eFive-25) - Installation Guide

IG-013-0-EN-(eFive-100) - Installation Guide

AUG-050-0-EN-(eFive VPN Client Configuration and Device Access)

4. eGabit Installation

4.1 Installation

Install the application on your machine.

Note: During the installation process, the installer checks whether a legacy **eCatcher** (version 2.1) is present on the machine. If so, you will be asked whether you want to copy the former **eCatcher** configuration into **eGabit**. If you answer yes, all devices installed in your **eCatcher** will be copied in **eGabit**.

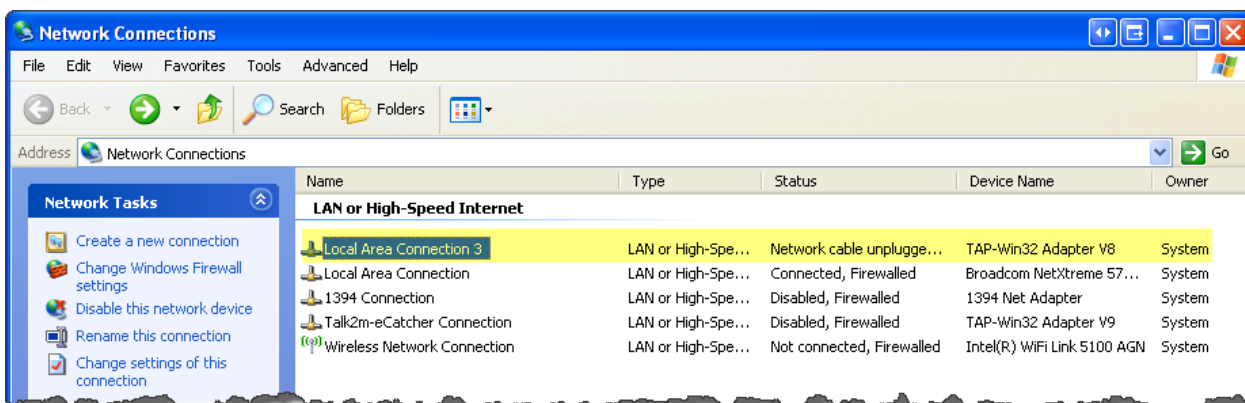
4.2 Program Location

Once installed, the application is located in the following directory:

C:\Program Files (x86)\eWON\eGabit

5. How Does it Work?

eGabit allows to manage your VPN-client connection to an eFive server (one at a time). The application is running on the PC side to establish the connection. Therefore it creates a new instance in your Windows Network Connections.



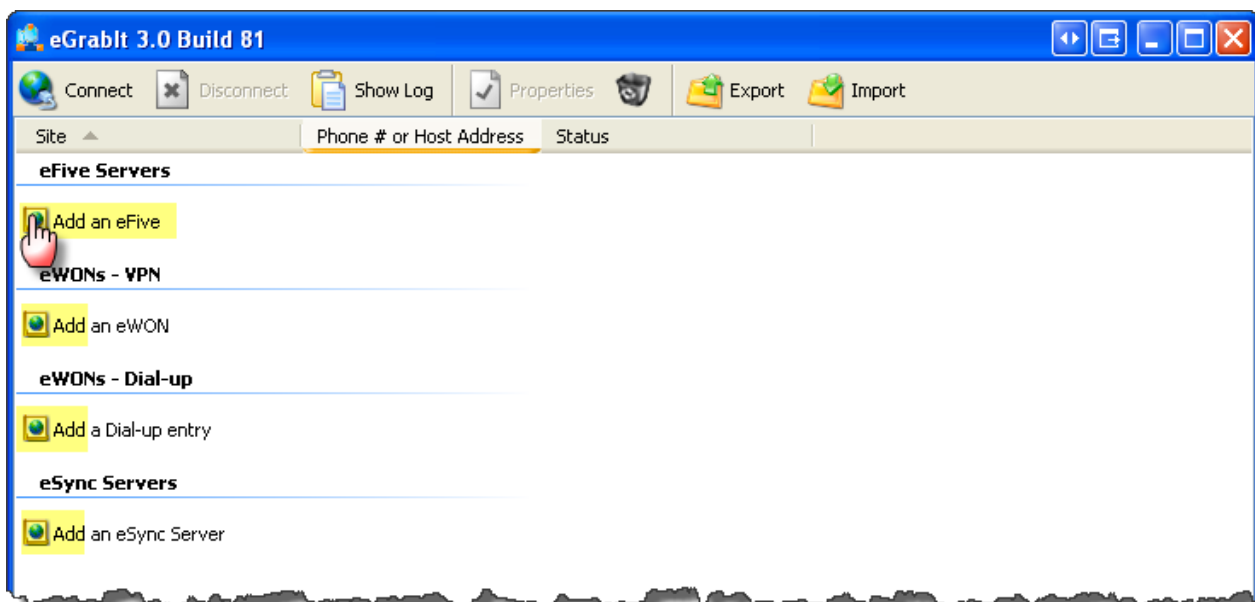
This instance is a virtual adapter that is activated when you ask eGabit to establish a client connection to the VPN server.

Before starting to use eGabit, you need to create and configure the devices you want to connect with. These steps are explained below for the eFive and at the end of this guide for the other devices supported.

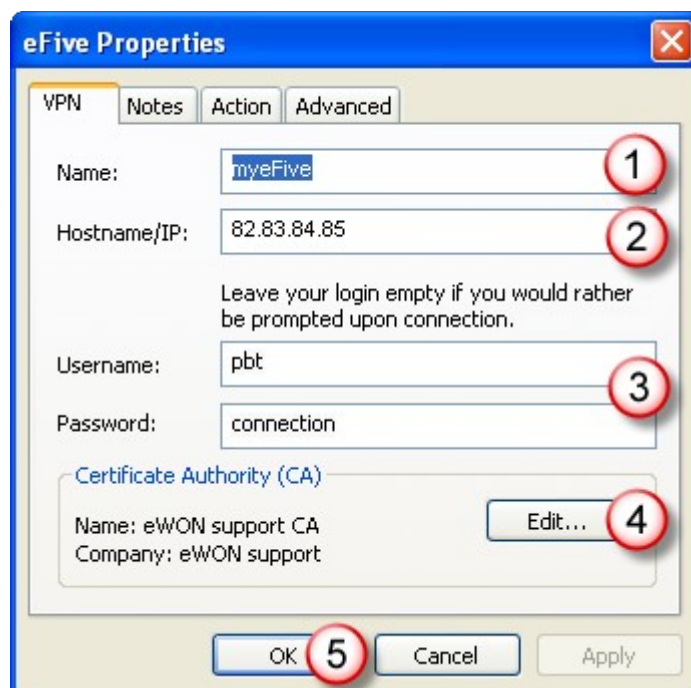
6. Add and Configure an eFive VPN Server

6.1 Step 1 - Add an eFive VPN Server

Start eGabit.



When double clicking on **Add an eFive**, a pop-up opens to enter the properties of the relevant eFive. This pop-up has 4 tabs, the first tab VPN needs to be filled-out, the others are optional. Enter a server **Name** (1). **Note:** This name will appear in the list of devices of your eGabit interface. It does not need to be consistent with the Server Name that was allocated in the configuration of the eFive itself. The **Hostname/IP** field (2) is the public IP address of the Internet router behind which the eFive is placed. Alternatively this address can be a domain name like www.company.com.

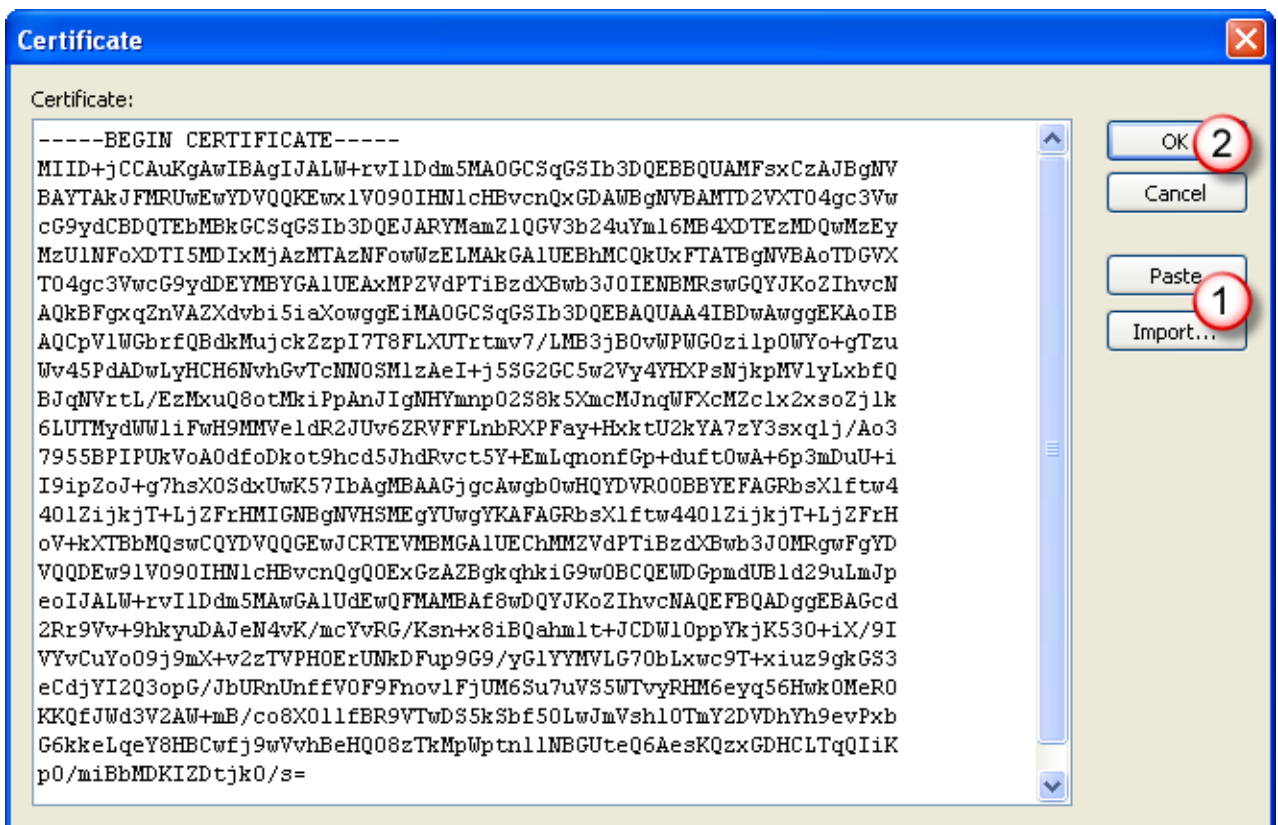


The **Username** and **Password** fields (3) are those of the VPN account created for this PC connection in the eFive (and not those of the eFive as such). If you leave these fields blank, you'll be prompted for the VPN account Username and Password *each time you connect*.

Please refer to the § *Creating a VPN account* in Step 4 of the AUG-050-0-EN-(eFive System and VPN Configuration) if you want to know where these fields are defined.

Then click on the **Edit** button (4) to enter your Certificate Authority (CA).

An empty **Certificate** pop-up opens. You can either import or copy/paste (1) the relevant **Certificate Authority**. Click **OK** when done (2).

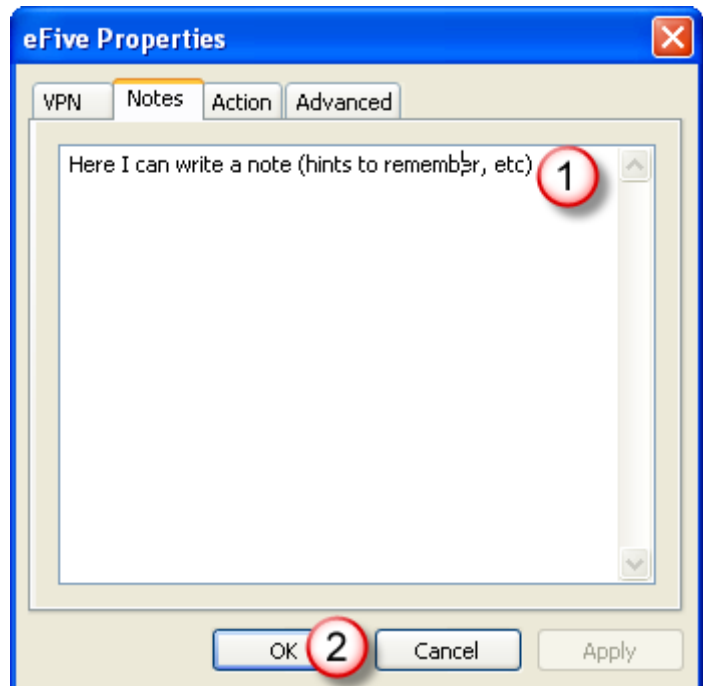


Please refer to Step 4 of the AUG-050-0-EN-(eFive System and VPN Configuration) if you want to know how to generate the Certificate Authority.

Click **OK** twice (2, in current capture) (5, in previous capture) when done.

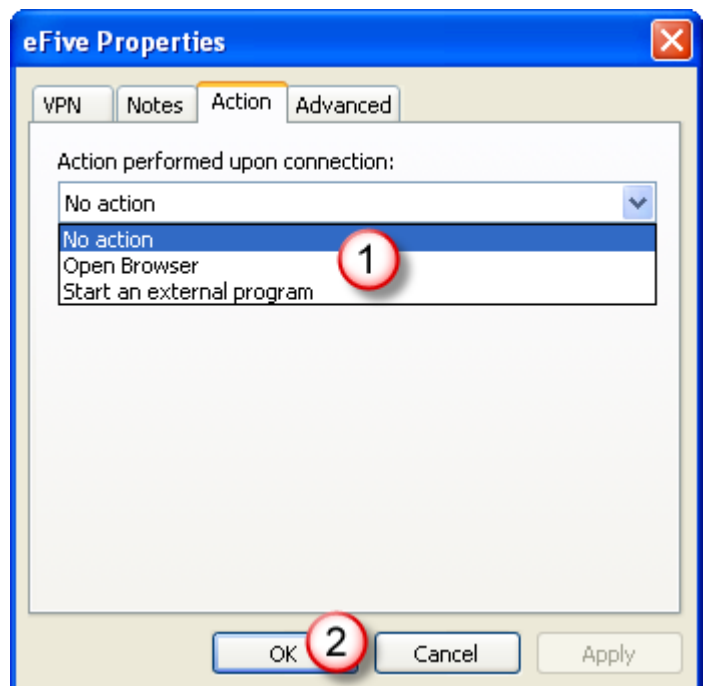
In the **Notes** tab, you can optionally add a text (1) related to this eFive Server connection.

Click **OK** when done (2).



In the **Actions** tab, you can optionally select the type of action (1) to execute automatically once the connection is established. This can be either starting your Internet browser OR launch an external application like, for example, a PLC console or the remote access service of a SCADA application.

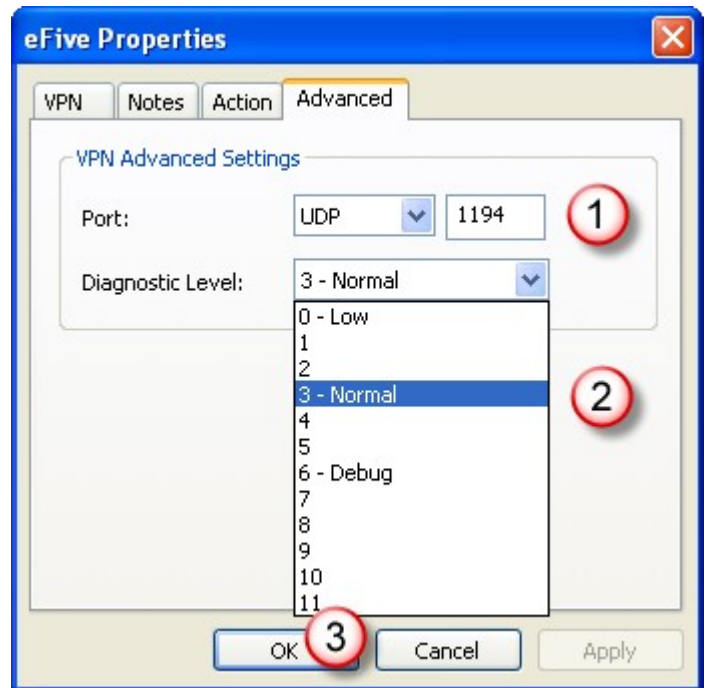
Click **OK** when done (2).



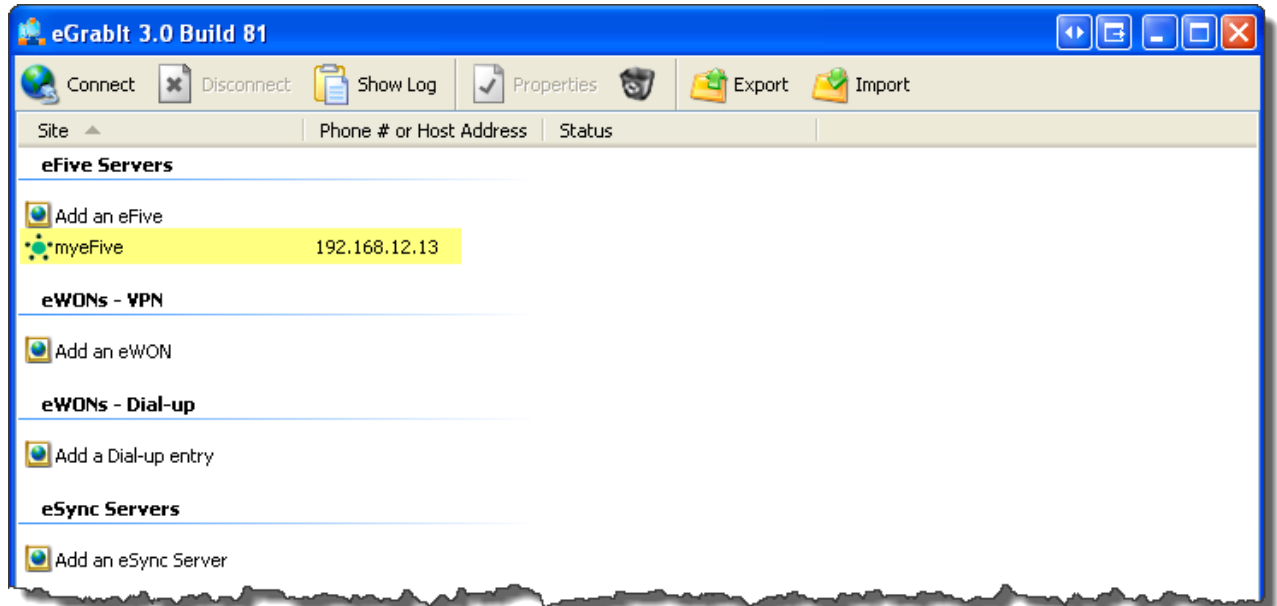
In the **Advanced** tab, you can optionally select additional VPN settings including the protocol type (UDP or TCP) and the **Port** used (1).

In **Diagnostic Level** you can select the granularity of the events log (2). The higher the number, the more events recorded.

Click **OK** when done (3).

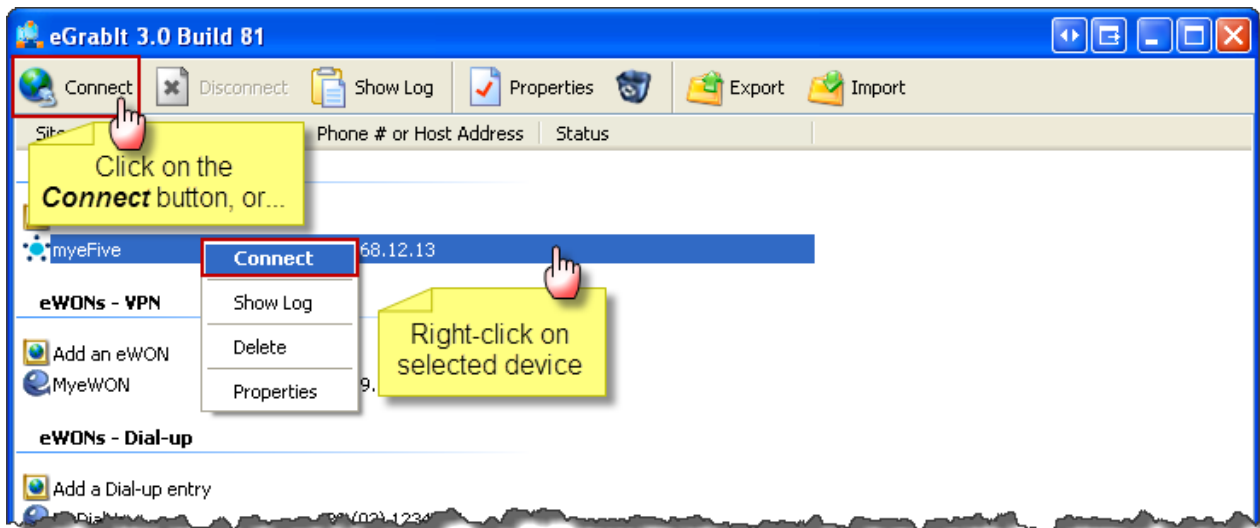


The newly created eFive server appears in the list below the line **Add an eFive**.



6.2 Step 2 - Connect to an eFive VPN server

Just right-click on the selected device and click on **Connect** like shown below:



Note: double-clicking on the selected device OR clicking on the **Connect** icon in the menu bar are two alternatives to start the connection process.

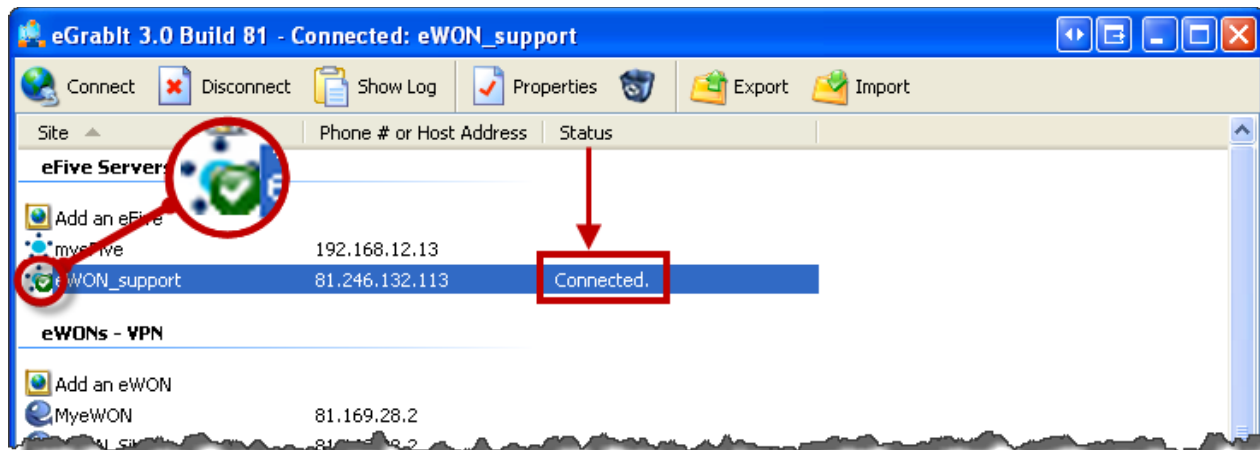
Depending on the configuration (fields left blank) you may be prompted to enter:

- Hostname/IP
- username/password of the VPN account

Allow enough time for the connection to complete.

As soon as the connection is established, you can observe that the eFive is connected by the word **Connected** in the status column as well as the green check in the devices icon.

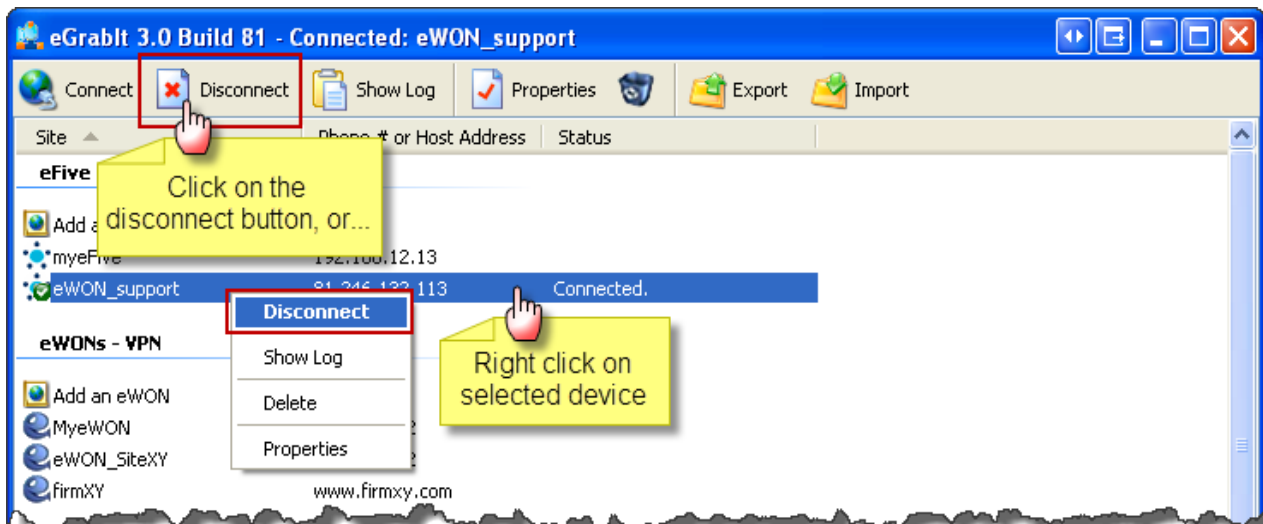
You are now connected to the VPN network and you can start accessing the VPN devices.



If the connection fails, please have a look at the logs (see § 6.7 View logs)

6.3 Step 3 - Disconnect an eFive VPN server

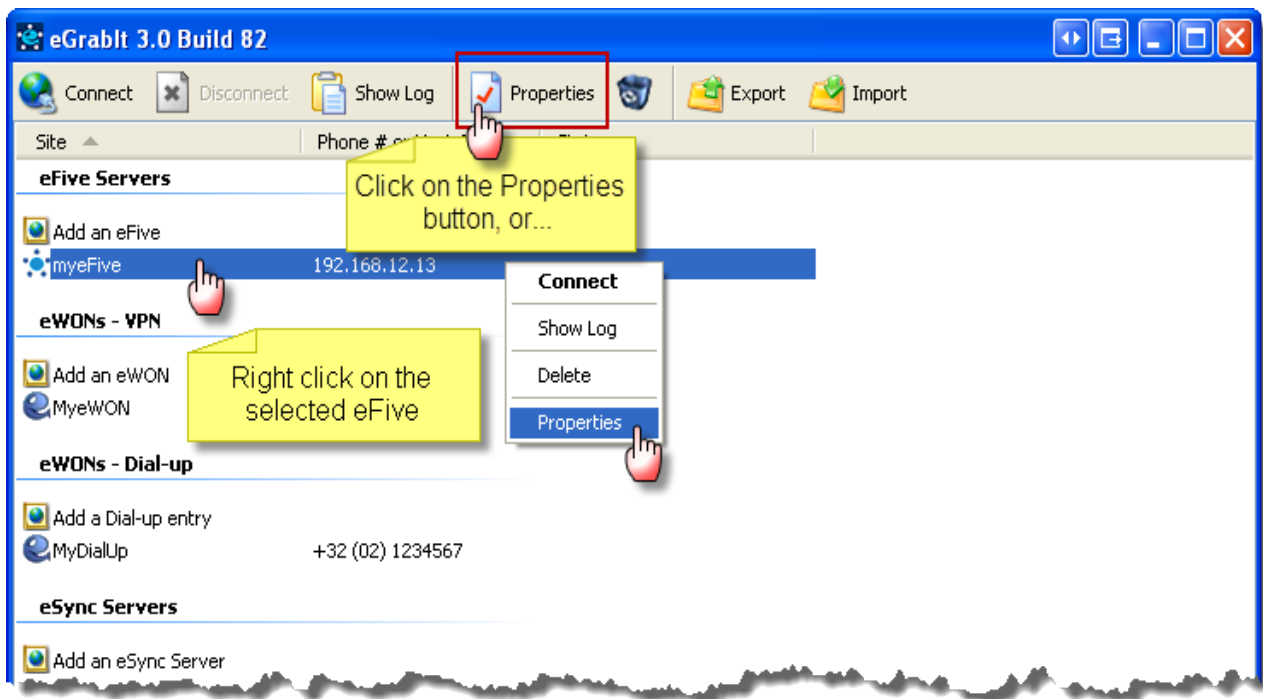
Just right-click on the selected device and click on **Disconnect** like shown below:



Note: double-clicking on the selected device OR clicking on the **Disconnect** icon in the menu bar are two alternatives to close the connection.

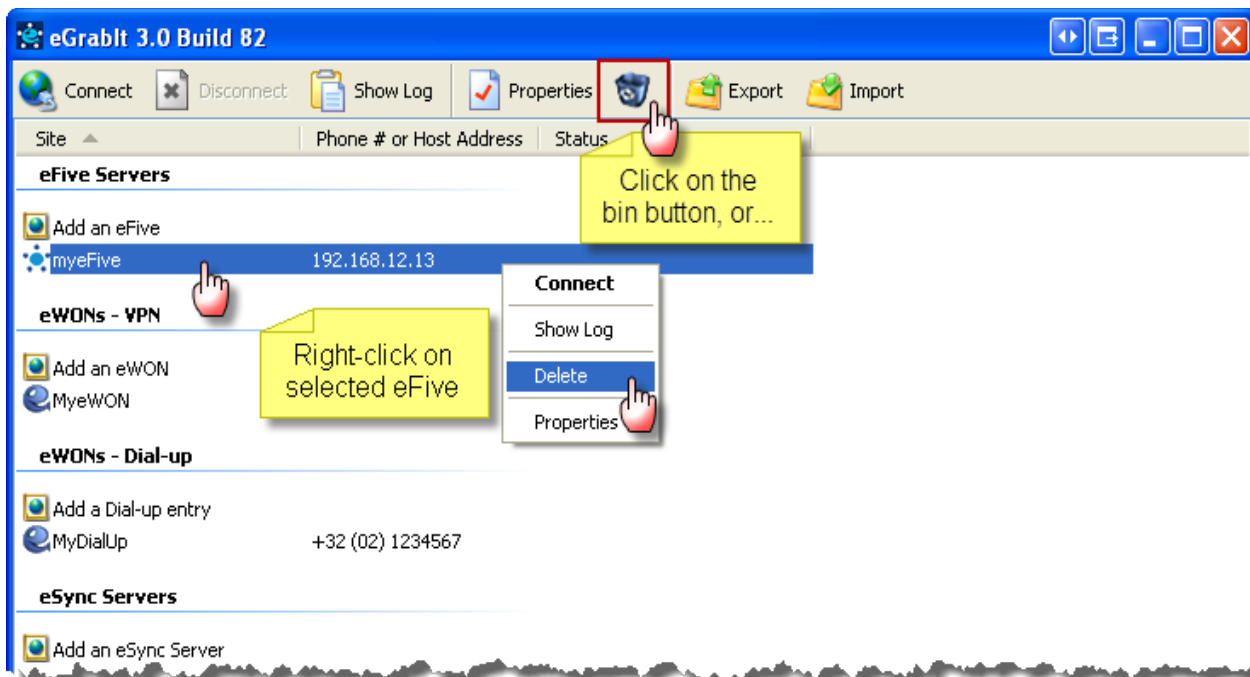
6.4 Editing the Properties of an eFive

Just right-click on the selected device and click on **Properties** like shown below.



6.5 Deleting an eFive

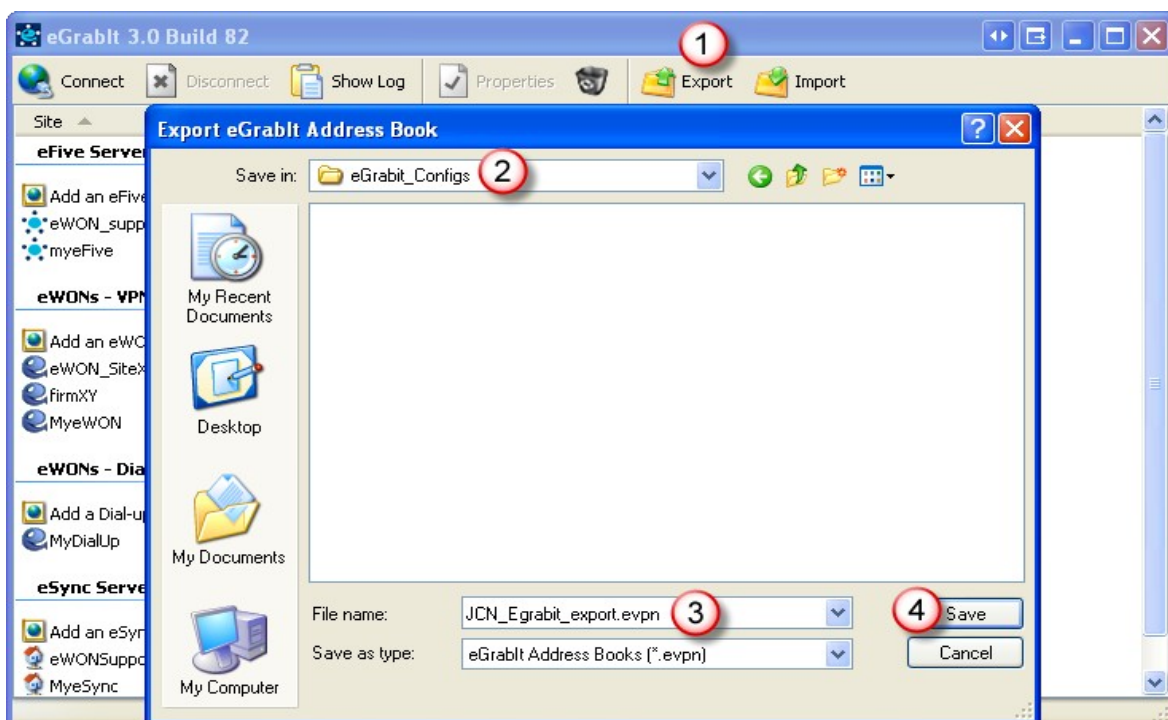
Just right-click on the selected device and click on **Delete** like shown below.



6.6 Export & Import the Configuration

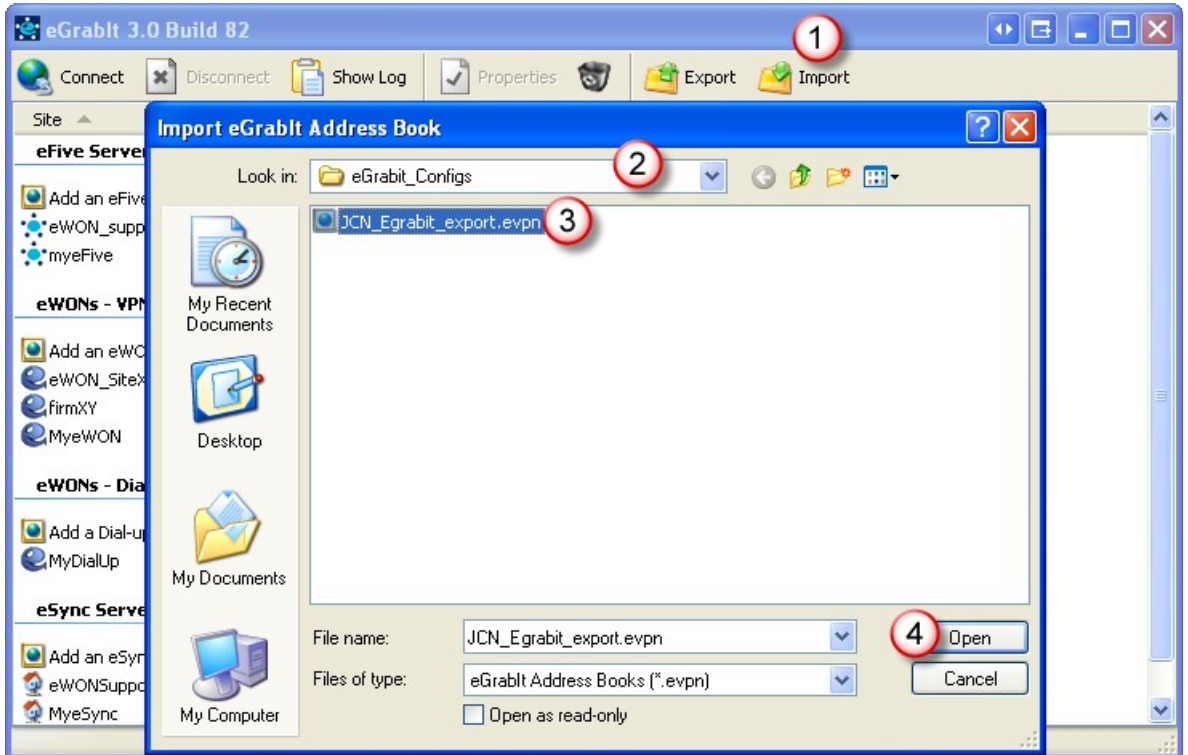
Exporting and importing existing configurations is useful to transfer them from one PC to another. It is also recommended to take a backup of an existing configuration.

6.6.1 Export the current config file



Click on the **Export** icon in the menu bar (1). Create or select a directory at an appropriate location (2). Specify a file name (3). Click **Save** (4).

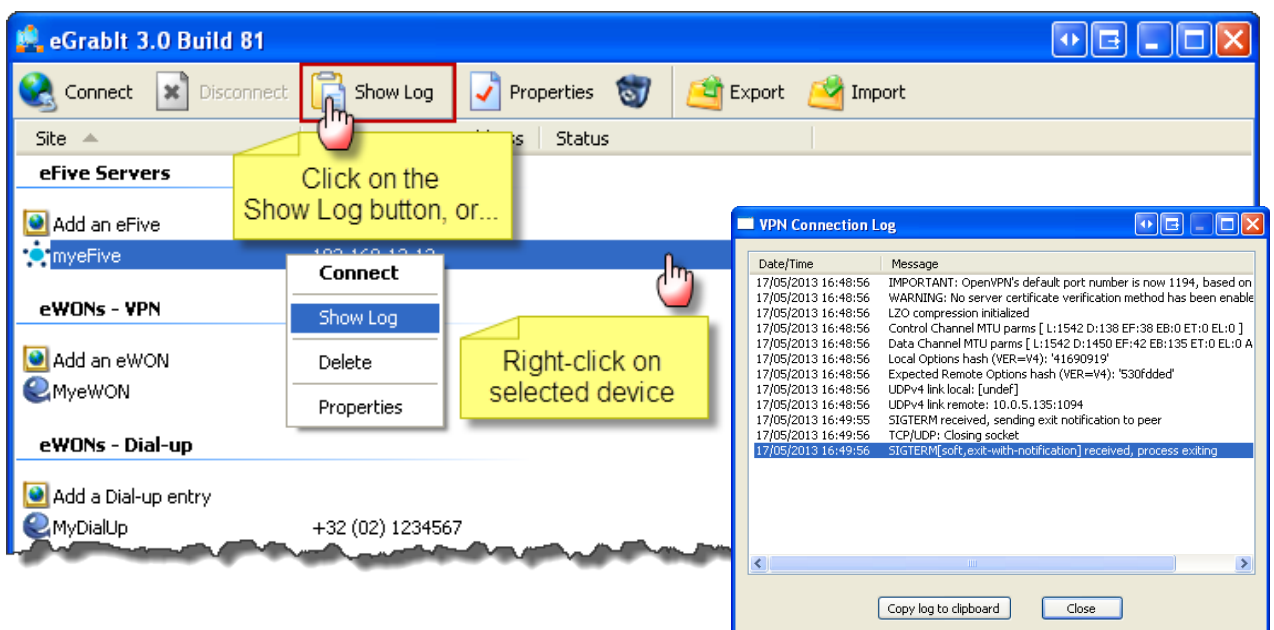
6.6.2 Import a config file



Click on the **Import** icon in the menu bar (1). Select the directory where the file to import is located (2). Select the file name (3). Click **Open** (4).

6.7 View logs

Just right-click on the selected device and click on **Show log** like shown below:

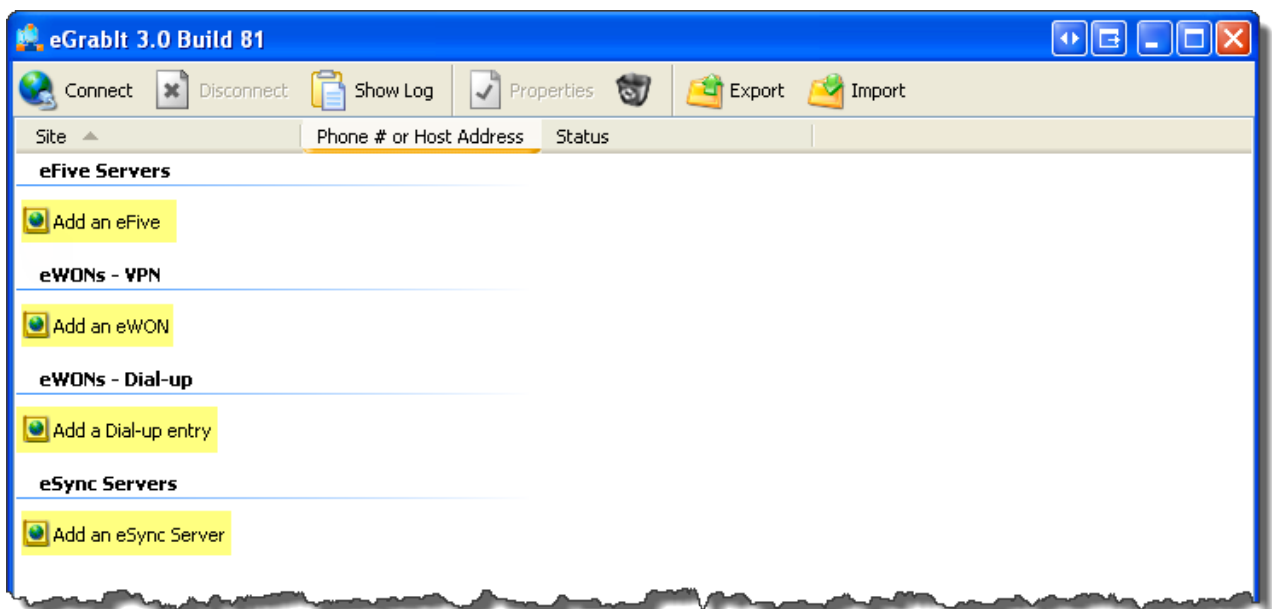


7. Add and Configure Other Devices

This eGabit software also allows to establish a connection to other systems.

The other possible connections include:

- Direct VPN connection to the eWON
(see AUG-020-0 VPN Direct Connection Using the 2d Eth. Interface and AUG-002 Direct Connection Using Modem)
- **Dial-up** (ppp) connection to the eWON
(see AUG-013 Direct Phone Connection)
- VPN connection to an **eSYNC** server
(see AUG-053 eSync VPN Server Configuration)



Note: When the eGabit software is installed on a PC where an existing eCatcher 2.1 is installed, the eGabit installer automatically takes over all the devices existing from the former eCatcher.

7.1 eWON VPN Connection

When double clicking on **Add an eWON**, a pop-up opens to enter the properties of the relevant eWON. This pop-up has 4 tabs, the first tab VPN needs to be filled-out, the others are optional.

Enter a **Name** (1).

Note: This name is the name of the VPN connection. It will appear in the list of devices of your eGabit interface. It does not need to be consistent with the Name that was allocated in the configuration of the eWON itself.

In the **Hostname/IP** field (2), you can enter the public Internet address of your eWON. You can let this field empty to specify the address for every new connection (best option if you receive the IP address per email through the Publish IP address feature of the eWON).

If you have configured your eWON to publish its address by DNS, this Dynamic DNS name should be the Hostname/IP.

The screenshot shows the 'eWON Properties' dialog box with the 'VPN' tab selected. The fields are as follows:

- Name:** MyeWON (1)
- Hostname/IP:** 81.169.28.2 (2)
- Passphrase:** azerty (3)
- eWON LAN:** (4)
 - IP Address:** 10 . 0 . 120 . 0
 - Subnet Mask:** 255 . 255 . 255 . 0
- Buttons:** OK (5), Cancel, Apply

The **Passphrase** field is the one configured in the VPN parameters of the eWON configuration (3). If you leave this field blank, you'll be prompted for the VPN account Passphrase at each connection.

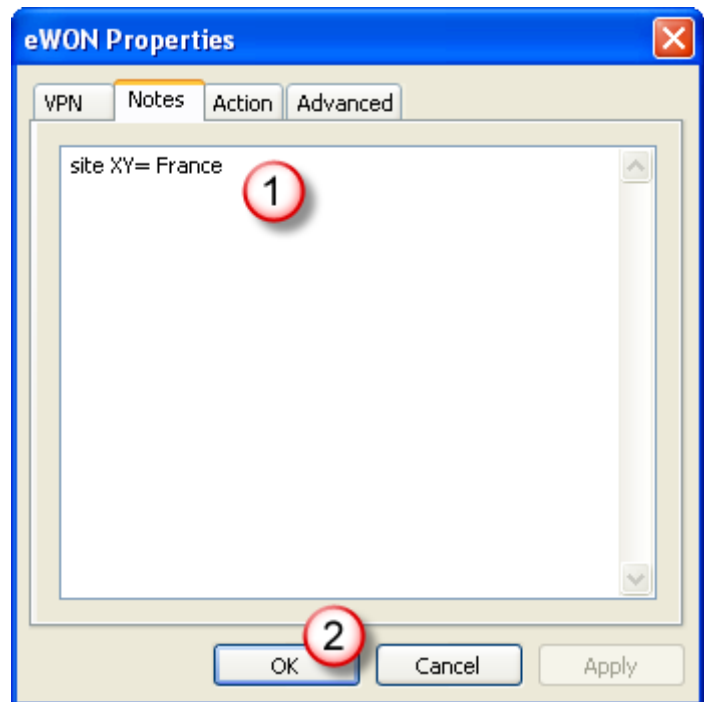
In the **eWON LAN** section enter the IP address **range** of the devices connected to the LAN side of the eWON. This information will be used to automatically add the route on your PC to route the packets through the VPN tunnel.

NOTE: Make sure you insert the IP address **range** and NOT the IP address of the eWON. If the eWON IP address is 10.0.120.13 with subnet mask 255.255.255.0, you should enter 10.0.120.0 mask 255.255.255.0.

Click on **OK** when done (5).

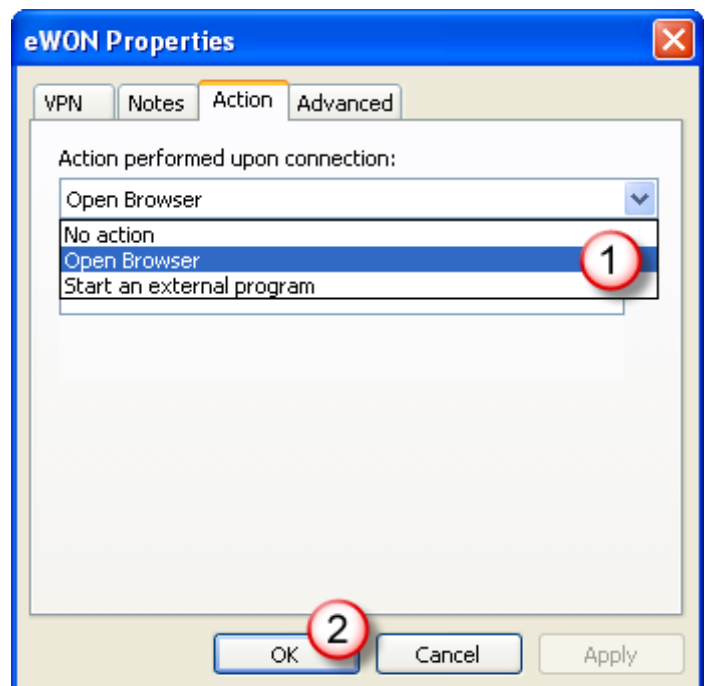
In the **Notes** tab, you can optionally add a text (1) related to this eWON connection.

Click **OK** when done (2).



In the **Actions** tab, you can optionally select the type of action (1) to execute automatically once the connection is established. This can be either launch your Internet browser OR launch an external application like, for example, a PLC console. By default the eWON internal Web page will be displayed.

Click **OK** when done (2).

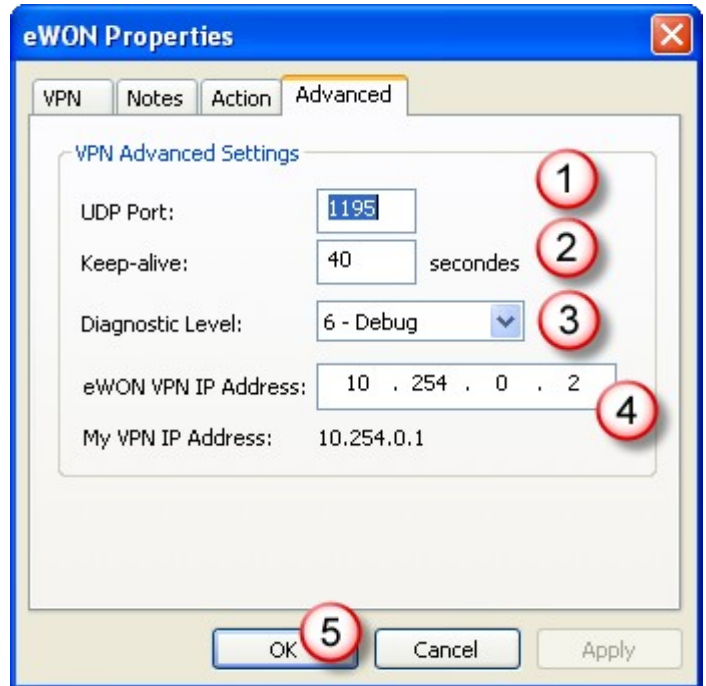


In the **Advanced** tab, you can select additional VPN parameters including UDP Port (1). By default the program uses 1194 because the eWON uses port 1194 in its default configuration.

In **Keep-alive**, you can specify a time in seconds corresponding to the VPN Keep-alive (2). The default Keep-alive value for eWON is 40 secs.

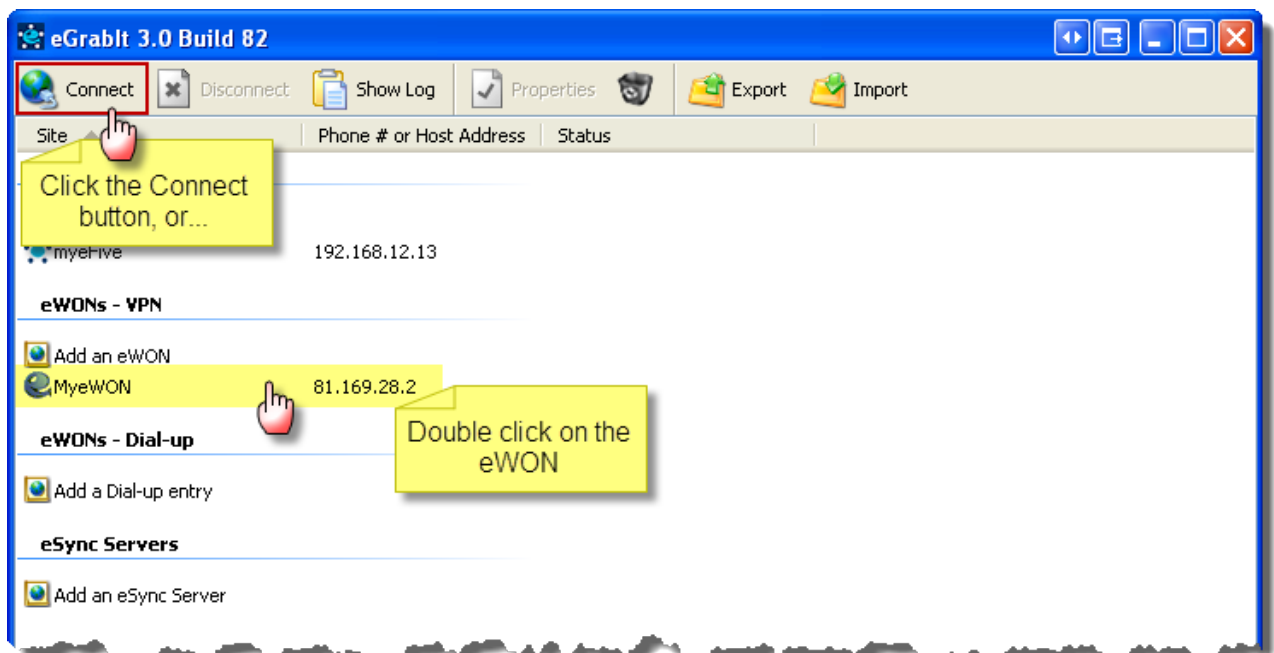
In **Diagnostic Level** you can select the granularity of the events log (3). The higher the number, the more events recorded.

In eWON VPN IP Address you can specify the VPN IP address of the eWON (4). Leave the default IP if not specified otherwise on the eWON.



Click **OK** when done (5).

The eWON VPN connection you created will now appear in the list under eWONs - VPN.



7.2 Dial-Up Connection

When double clicking on **Add a Dial-up entry**, a pop-up opens to enter the properties of the relevant eWON. This pop-up has 3 tabs, the first tab **Dial-up** needs to be filled-out, the others are optional.

Note: creating a modem connection requires to have an installed modem on the PC.

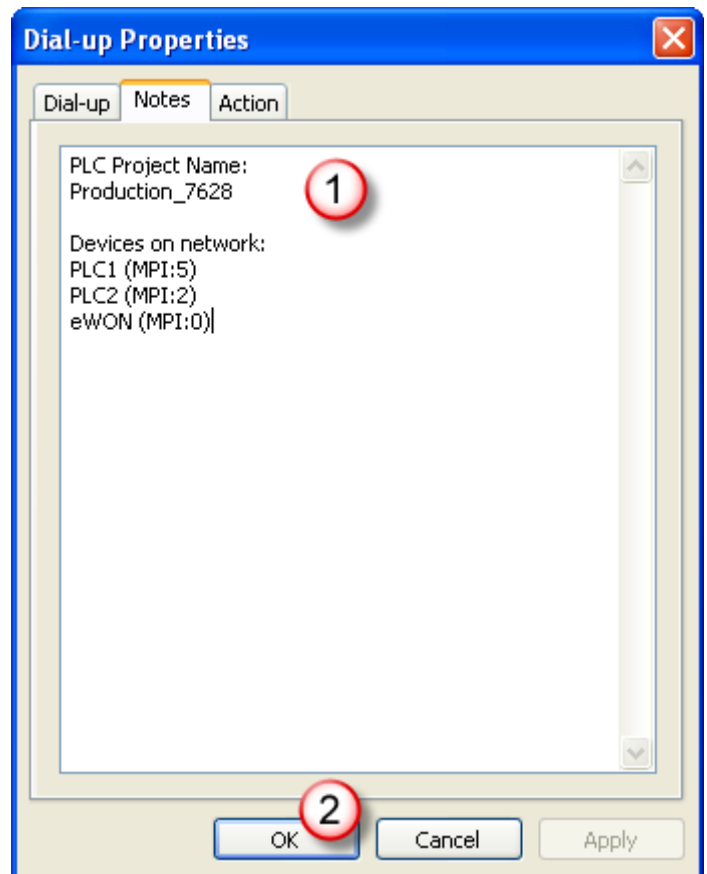
Enter a **Name** (1). **Note:** This name is the name of the dial-up connection. It will appear in the list of devices of your eGabit interface. In **Connect using:** select the modem you will use on your PC (2) (drop down list). In the **Phone Number** area: enter the phone number of your eWON (3). Select your country (4). You can use or not the dialing rules defined on your PC. In the **Login** area: enter a valid eWON user and password (5). The default login is **adm/adm**.

Click **OK** when done.

In the **Notes** tab, you can optionally add a text (1) related to this eWON Dial-Up connection.

For example, the name of the involved project or the addresses of the PLCs which will be reached through the dial-up connection.

Click **OK** when done (2).

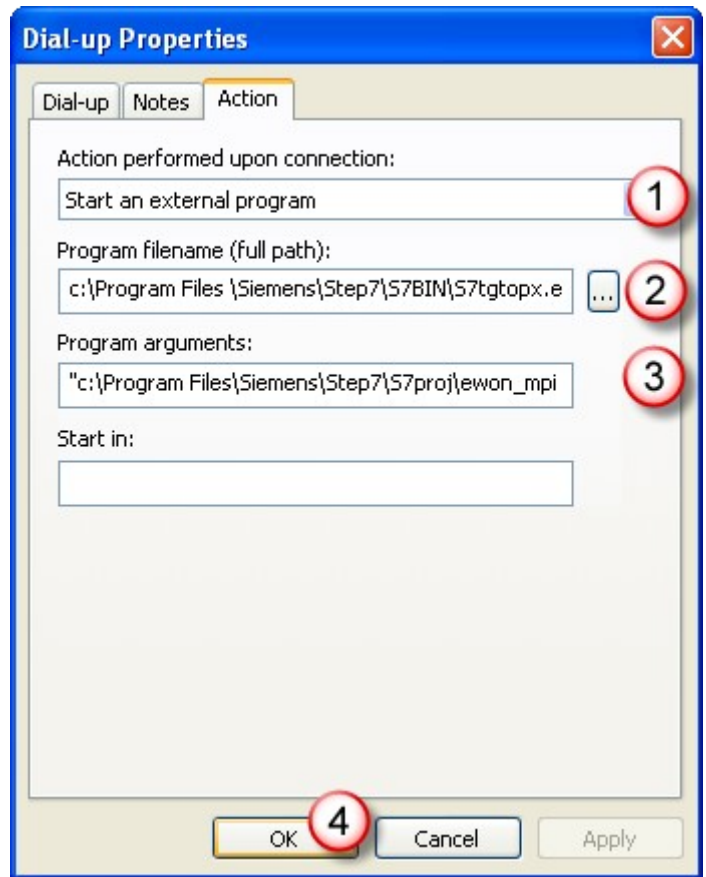


In the **Actions** tab, you can optionally select the type of action (1) to execute automatically once the connection is established. This can be either starting your Internet browser OR launch an external application like, for example, a PLC console. By default the eWON internal Web page will be displayed.

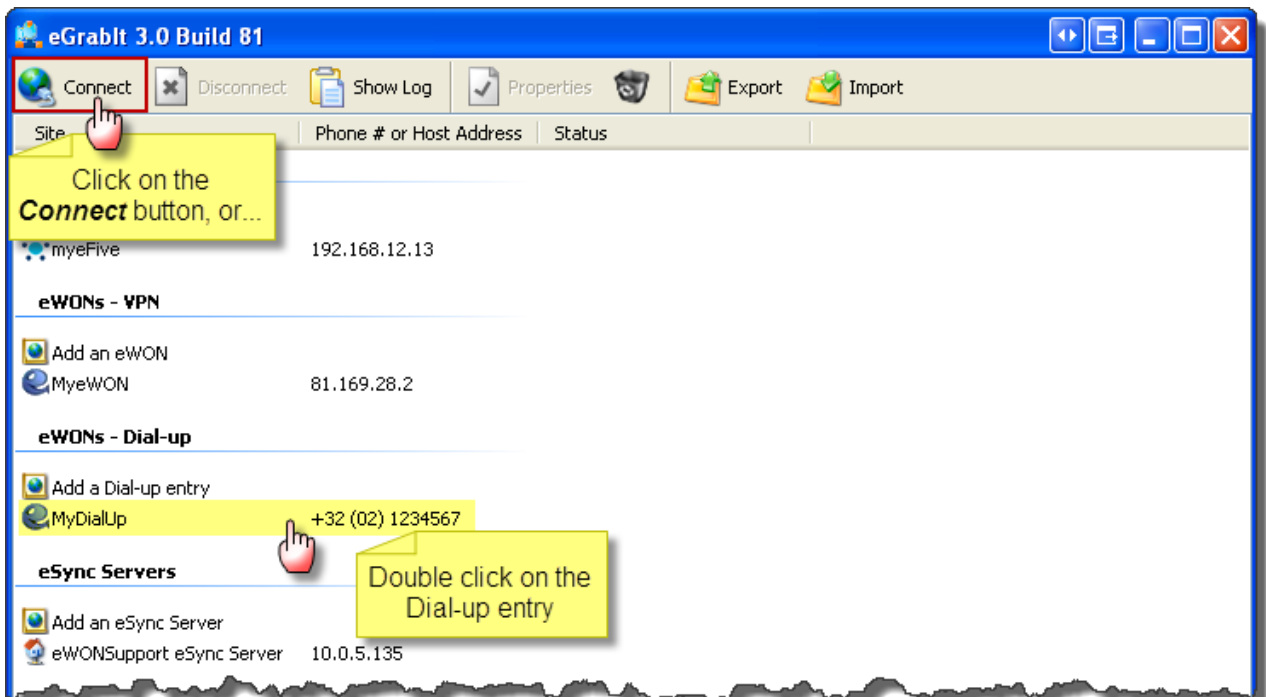
For example to launch automatically Step7® with the relevant project:

- Action performed upon connection:** Start an external program (1)
- Program filename:** Use the «...» button to chose the Step7® program (2)
- Program arguments:** /e & full path of your Step7® project (3)

Click **OK** when done (4).



The Dial-up connection you created will now appear in the list under **eWONs - Dial-up**

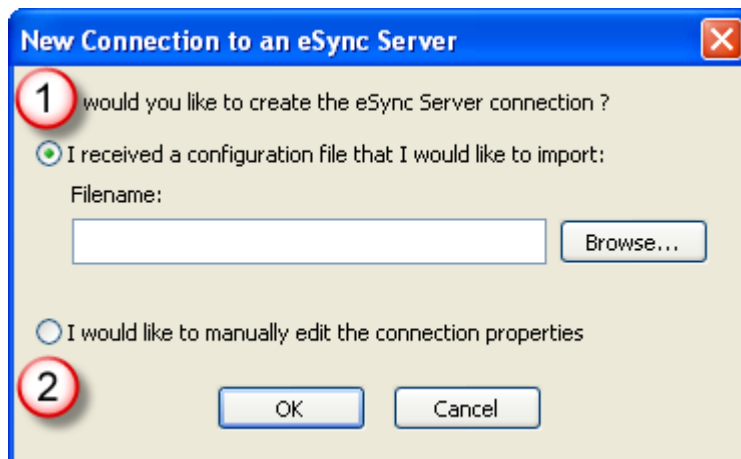


7.3 eSync VPN Server

7.3.1 Creation method selection

When double clicking on **Add an eSync server**, a pop-up opens to make a choice between two methods to create the new connection.

Either you can import a User Certificate file (1) or edit the connection properties manually (2). Both methods are explained hereafter.

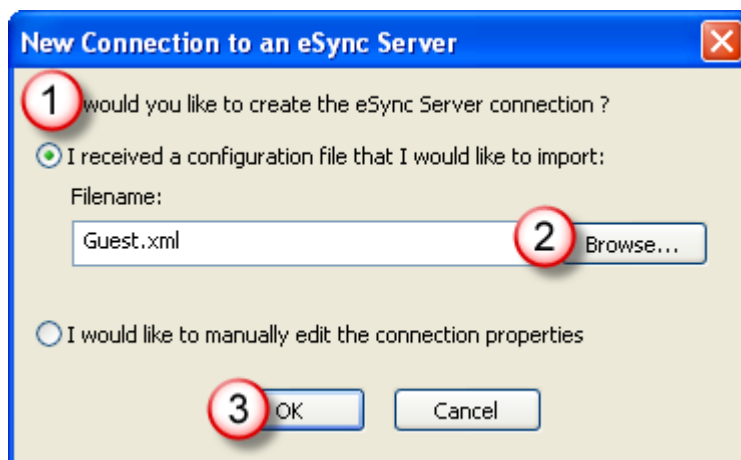


7.3.2 Based upon the import of a User Certificate file

Adding an eSync VPN server can be done quickly by importing an existing User Certificate XML-file gathered from eSync. See our AUG-053-0-EN-(eSynch - VPN Server) to understand how to export the User Certificate.

Select the first option **I received a configuration file that I would like to import** (1), browse your PC to find the User certificate XML-file (2) and click OK (3).

The eSync connection you created will now appear in the list under **eSync Servers**. If you used this method, you can now jump to the list view at the end of the manual creation procedure.



7.3.3 Manual creation

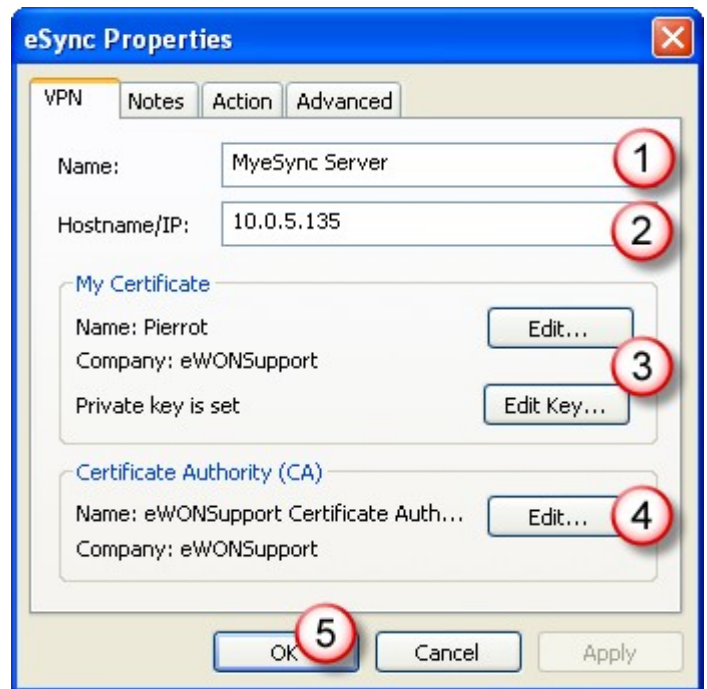
In this case, select the second option *I would like to manually edit the connection properties* in the method selection pop-up and click OK. Another pop-up opens to enter the properties of the relevant eSync VPN Server. This pop-up has 4 tabs, the first tab VPN needs to be filled-out, the others are optional.

Enter a server **Name** (1).

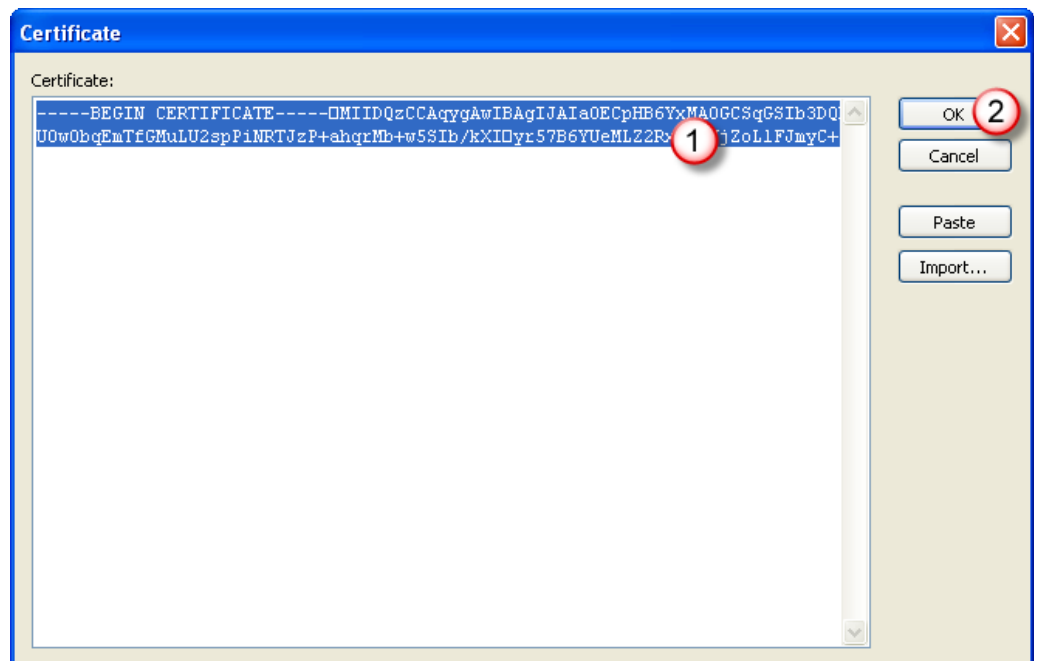
Note: This name will appear in the list of devices of your eGabit interface. It does not need to be consistent with the Server Name that was allocated in the configuration of the eSync Server itself.

In the **Hostname/IP** field (2), you can enter the public Internet address of your eSync Server. If you have configured your eSync Server to publish its address by DNS, the value of the Hostname/IP field should be this Dynamic DNS name.

The **My Certificate** area (3) is the place where the VPN user account certificate and key are stored. This certificate can be copy/pasted from the eSync configuration interface. See AUG-053-0-EN-(eSync VPN Server Configuration).



The Certificate Authority area is where the server certificate is stored. Click on the **Edit** button (4) to enter your Certificate Authority (CA).

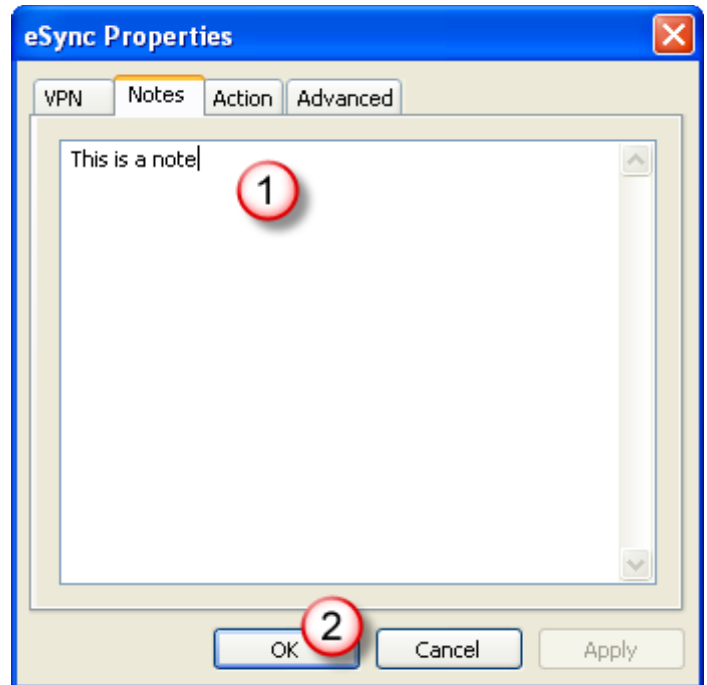


An empty **Certificate** pop-up opens. You can either import or copy/paste (1) the relevant **Certificate Authority**. Click **OK** when done (2).

Click **OK** twice (2) (5) when done.

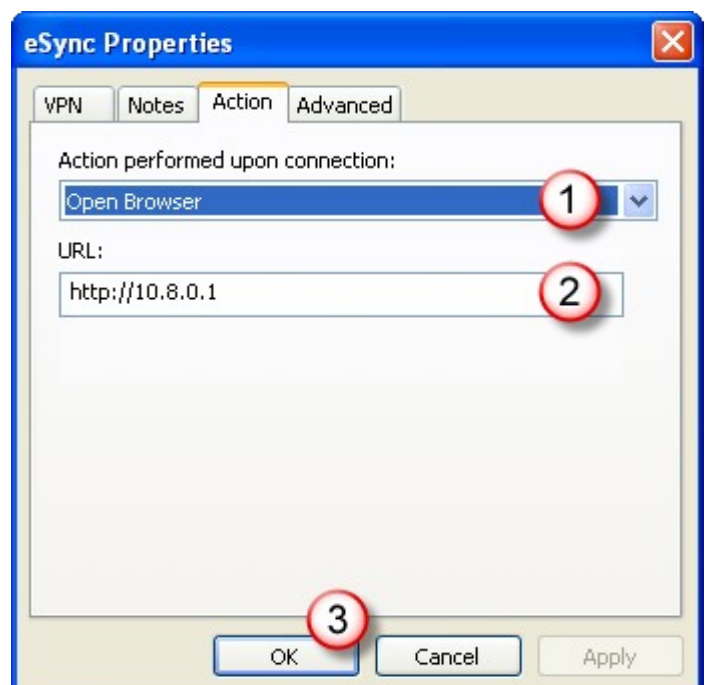
In the **Notes** tab, you can optionally add a text (1) related to this eSync server connection.

Click **OK** when done (2).



In the **Actions** tab, you can optionally select the type of action (1) to execute automatically once the connection is established. This can be either starting your Internet browser OR launch an external application like, for example, a PLC console. By default the eSync internal Web page will be displayed.

Click **OK** when done (2).

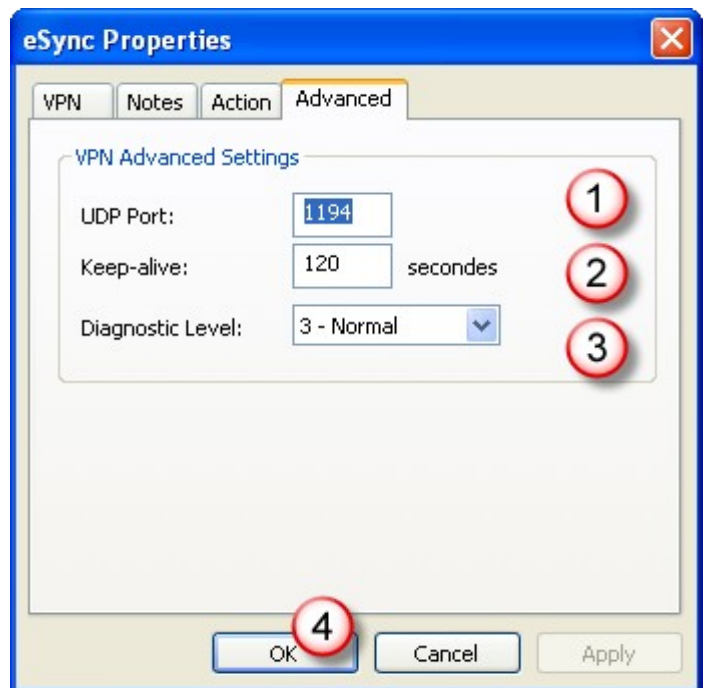


In the **Advanced** tab, you can select additional VPN settings including UDP Port (1). By default the program uses 1194 because the eSync Server uses port 1194 in its default configuration.

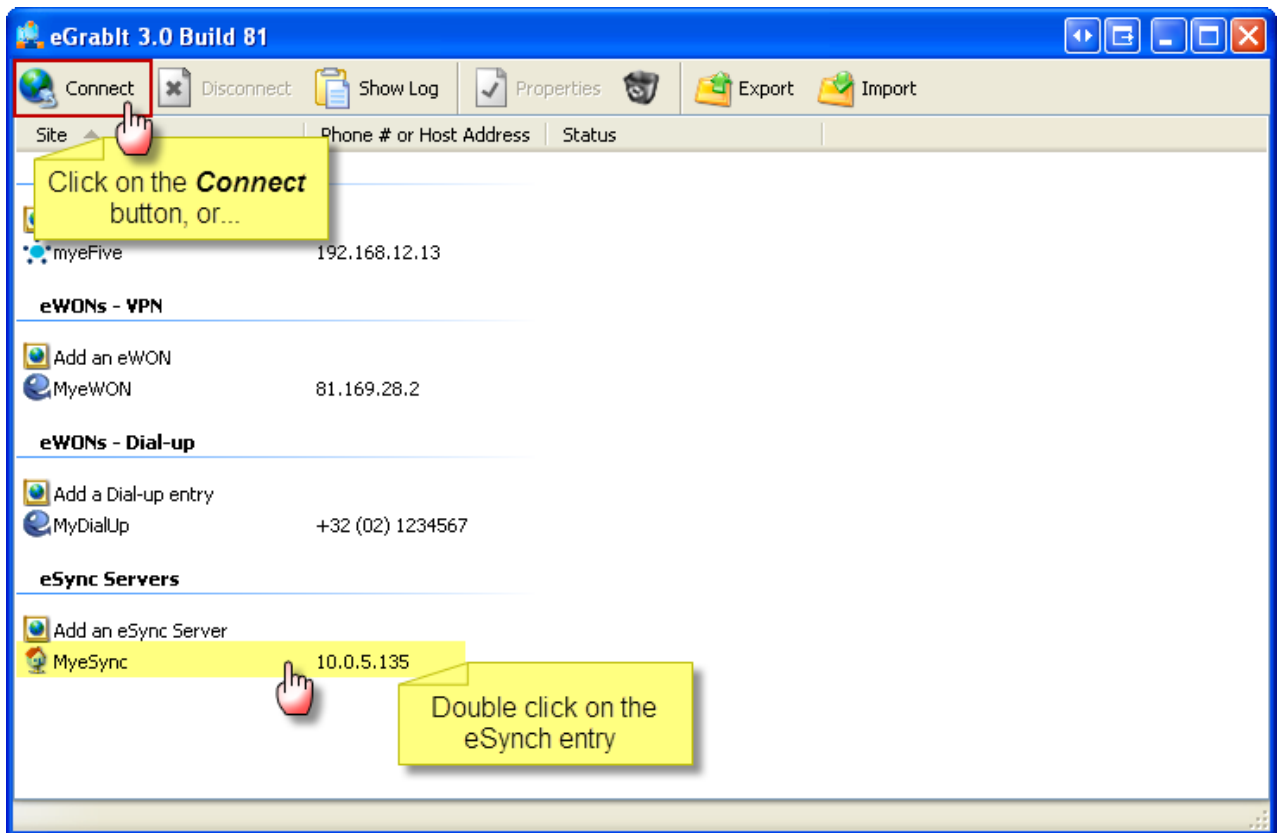
In **Keep-alive**, you can specify a time in seconds corresponding to the VPN Keep-alive (2). The default Keep-alive value for eSync is 120 secs.

In **Diagnostic Level** you can select the granularity of the events log (3). The higher the number, the more events recorded.

Click **OK** when done (4).



The eSync connection you created will now appear in the list under **eSync Servers**



Revision history

Revision Level	Date	Description
1.0	13/09/2013	Initial version

Document build number: 72

Note concerning the warranty and the rights of ownership:

The information contained in this document is subject to modification without notice. The vendor and the authors of this manual are not liable for the errors it may contain, nor for their eventual consequences.

No liability or warranty, explicit or implicit, is made concerning quality, the accuracy and the correctness of the information contained in this document. In no case the manufacturer's responsibility could be called for direct, indirect, accidental or other damage occurring from any defect of the product or errors coming from this document.

The product names are mentioned in this manual for information purposes only. The trade marks and the product names or marks contained in this document are the property of their respective owners.

This document contains materials protected by the International Copyright Laws. All reproduction rights are reserved. No part of this handbook can be reproduced, transmitted or copied in any way without written consent from the manufacturer and/or the authors of this handbook

eWON sa, Member of ACTL Group.