

Yokogawa FA-M3

FA-M3 CPU SP35-5N, SP55-5N CPU port, F3LC11 Computer Link module.

<http://www.yokogawa.com/itc/itc-index-en.htm>

HMI Setting:

Parameters	Recommend	Option	Notes
PLC type	Yokogawa FA-M3		
Com port	RS232		
Baud rate	19200	9600, 19200	
Parity bit	Even	Even, Odd, None	
Data Bits	8	8	
Stop Bits	1	1	
HMI Station No.	0		
PLC Station No.	1	1-31	

PLC Setting:

Communication mode	Use Personal Communication Link Use checksum Use End Character
--------------------	---

Device address:

Bit/Word	Device Type	Format	Range	Memo
B	X	ddd	201-71664(discontinuous)	
B	Y	ddd	201-71664(discontinuous)	
B	I	ddd	1-16384	
B	L	ddd	1-71024(discontinuous)	
B	M	ddd	1-9984	
W	D	ddd	1-8192	
W	B	ddd	1-32768	
W	V	ddd	1-64	
W	W	ddd	1-71024(discontinuous)	
W	Z	ddd	1-512	

Wiring diagram:

RS-232: CPU port

MT8000 RS232
9P D-SUB

COM1	COM2	COM3
3 TX	4 TX	7 TX
2 RX	6 RX	8 RX
5 GND	5 GND	5 GND

CPU port cable
KM11 RS-232

3	RXD
2	TXD
5	GND

RS-232: LC11

MT8000 RS232
9P D-SUB Female

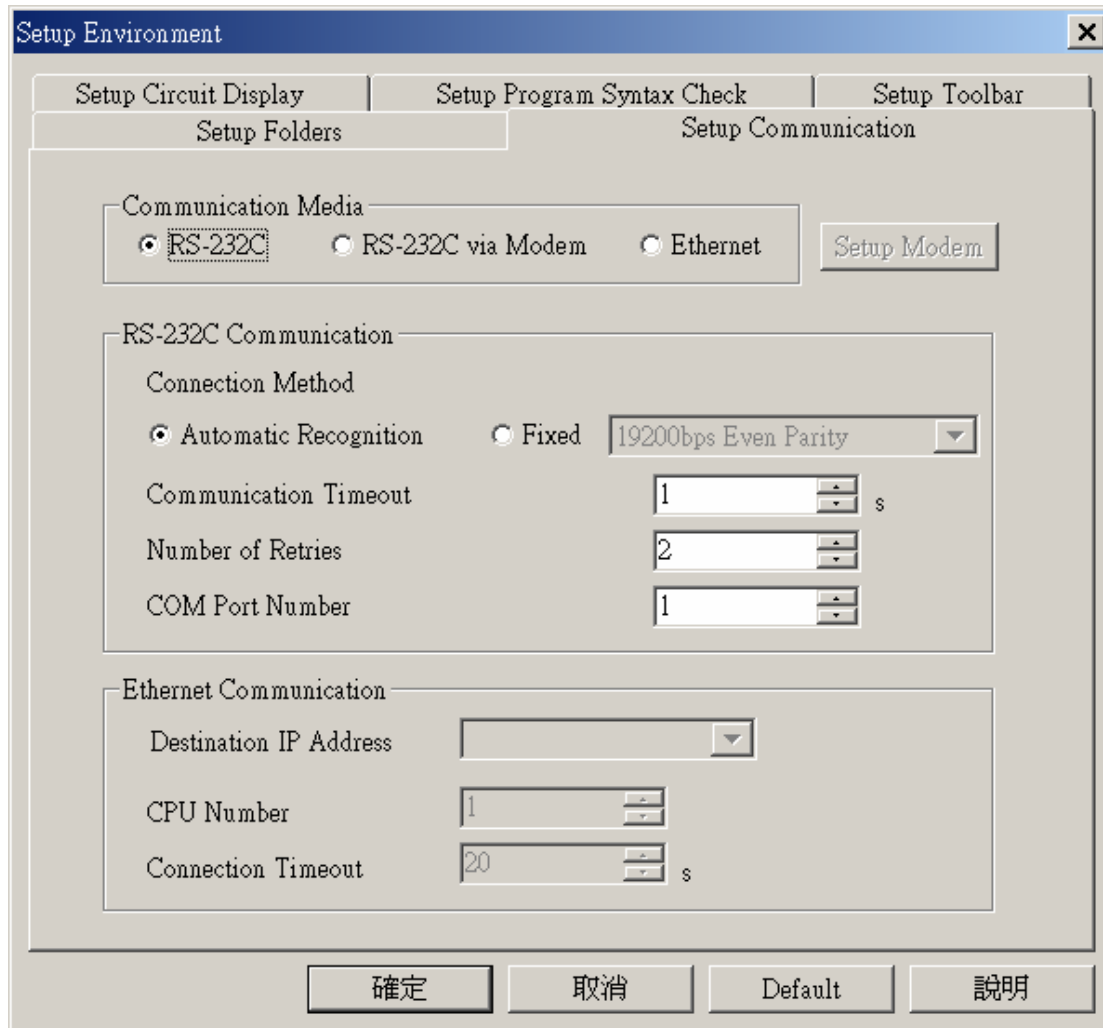
COM1	COM2	COM3
3 TX	4 TX	7 TX
2 RX	6 RX	8 RX
5 GND	5 GND	5 GND

LC11 Computer
Link module RS232
port

2	RXD
3	TXD
5	GND
7	RTS
8	CTS

How to get the WideField communication setting

If you want get the WideField communication setting, select [Tool]->[Set Environment] default is Automatic. Using the Automatic Recognition, Wide Field software will connect the Current PLC and get the PLC communication setting. If you have know the PLC communication configuration, you also can select the Fixed mode ,It will connect the PLC quickly.



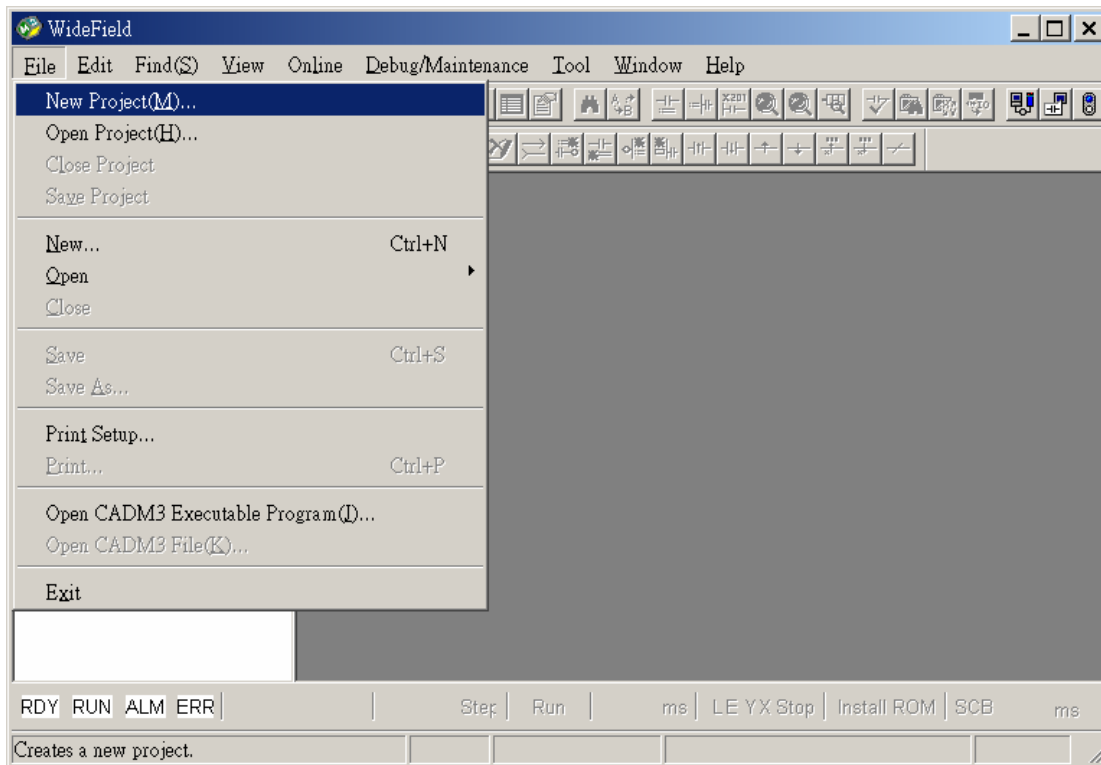
P.S Because use Personal computer link, when you connecting to PLC it will delay about 20sec for test communication.

How to Setting YOKOGAWA PLC Communcation configuration.

YOKOGAWA FA-M3

CPU SP55-5N (same SP35-5N)

[File]->[New Project] to create a new project



click "Configuration" for setup communication.

