

## Parker Compax3

Parker Compax3 Servo Drive

<http://www.parker.com>

### HMI Setting:

Parameters	Recommend	Option	Notes
PLC type	Parker Compax3		
Com port	RS232	RS232, RS485	
Baud rate	115200	9600~115200	
Parity bit	None	Even, Odd, None	
Data Bits	8	7 or 8	
Stop Bits	1	1 or 2	
HMI Station No.	0		
PLC Station No.	0	0~255	

### PLC Setting:

--	--

### Device address:

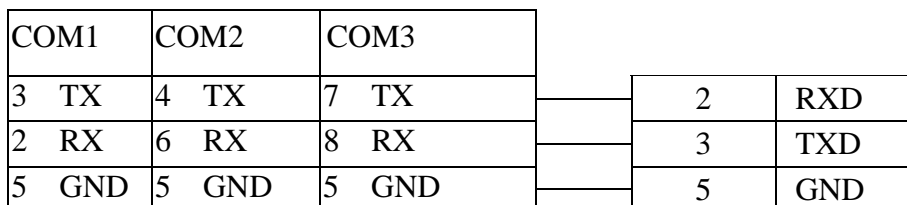
Bit/Word	Device Type	Format	Range	Memo
B	R_Low16bit	ddddddd(h)	0~99999999(f)	
B	R_High16bit	ddddddd(h)	0~99999999(f)	
DW	Register_Int	dddddd	0~999999	For Register is INT32 or U32
DW	Register_float	dddddd	0~999999	For Register is INT32 or U32
W	Register_Short	dddddd	0~999999	For Register is INT16 or U16

### Wiring diagram:

RS232

MT8000 RS232  
9P D-SUB

Parker Compax 3  
X10 9Pin RS232



RS485 2w

EasyView MT8000

RS485 2w D-SUB

COM1 [RS485]	COM3 [R485]
1 Data-	6 Data-
2 Data+	9 Data+
5 GND	5 GND

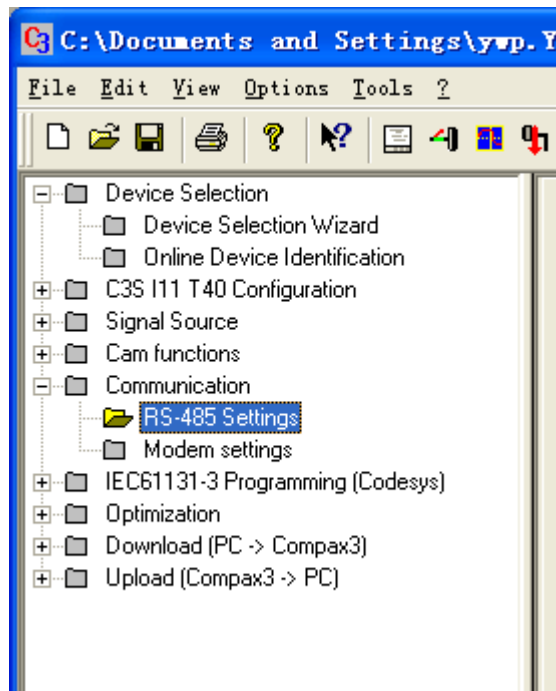
Parker Compax3 PLC

X10 9P D-SUB

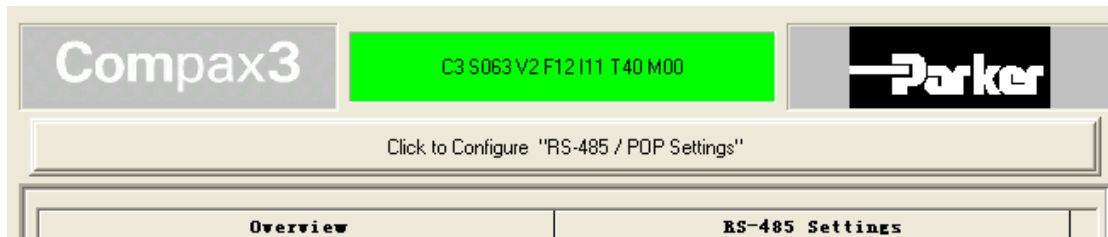
3	RXD
7	TXD
5	GND
1	Enable RS485
9	+5V

Setting Compax 3 servo as RS485 mode

1. Open C3 ServoManager2 and select "Communication" => "RS-485 Settings"



2. "Click to Configure "RS-485/POP Settings"



3. Setting parameter as follow (MT8000 parameters has the same as PLC settings)

The diagram shows an RS-485 driver circuit on the left, enclosed in a blue dashed box. It includes a TxD pin connected to a driver, an RE pin (enable), and an RxD pin connected to a receiver. The driver and receiver are connected to a twisted-pair cable with lines labeled A and B. On the right, three yellow boxes represent devices connected to the same bus, each with A and B terminals.

**RS-485 Settings**

Master	General
Multicast Address	98
Device Address	1
Baud rate	9600
Connection Type	Two wire
Parity	No
Stop bits	1
Data bits	8

4. Download settings to Compax 3 Servo