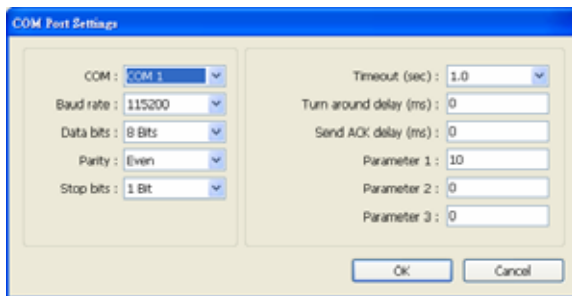


# Master (Master-Slave Protocol)

MT500 series

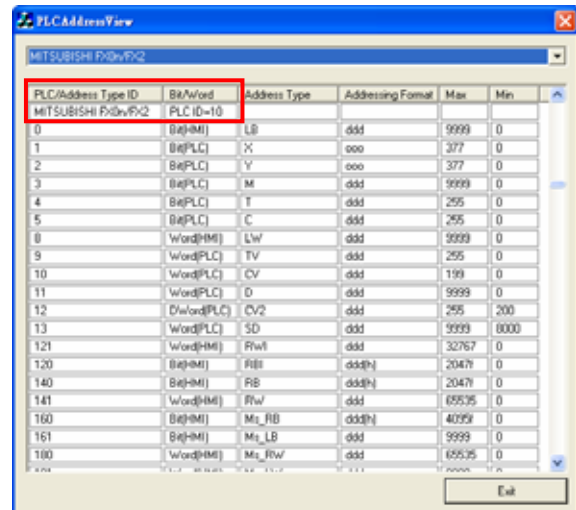
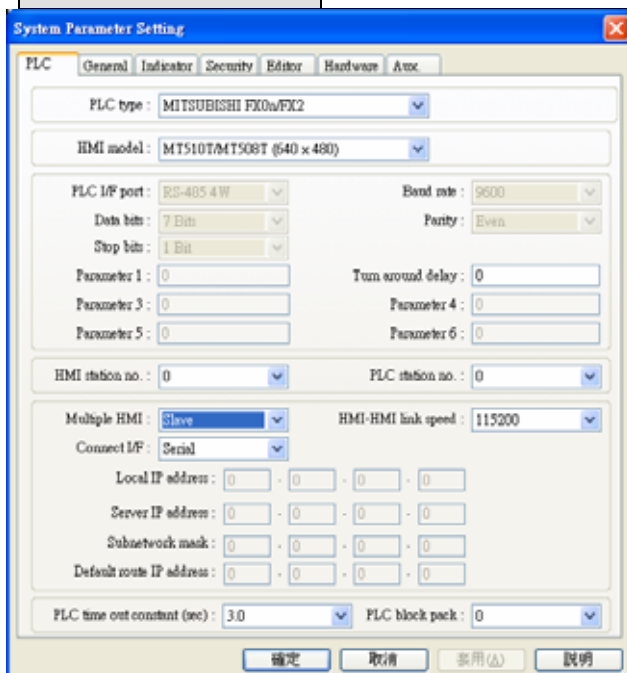
## HMI Setting:

Parameters	Recommend	Option	Notes
PLC type	Master (Master-Slave Protocol)		
Com port	RS232		
Baud rate	115200	38400, 115200	
Parity bit	Even		
Data Bits	8	8	
Stop Bits	1	1	
HMI Station No.	0		
PLC Station No.	0		
PLC Station No. Parameter 1	MT500 PLC ID	Use PLCAddressView.exe find PLC ID.	



## PLC Setting:

Communication mode	<b>MT500 Multiple HMI set Slave</b>
--------------------	-------------------------------------



## Device address:

Bit/Word	MT500	MT8000	Range	Memo
B	Ms_RB	RW_Bit	ddd:0~4095 (h): 0~f	
B	Ms_LB	LB	dddd:0~9999	
W	Ms_RW	RW	ddd:0~65535	
W	Ms_LW	LW	ddd:0~9999	

## Wiring diagram:

MT500

MT8000 RS232  
9P D-SUB

COM1	COM2	COM3
3 TX	4 TX	7 TX
2 RX	6 RX	8 RX
5 GND	5 GND	5 GND

MT500 PLC RS232  
D-SUB 9pin

3	RXD
2	TXD
5	GND

