

MITSUBISHI FX3U-ETHERNET

MITSUBISHI FX SERIES, Module: FX3U-ENET

<http://www.mitsubishi-automation.com>

HMI Setting:

Parameters	Recommend	Option	Notes
PLC type	MITSUBISHI FX3u (Ethernet)		
Com port	Ethernet		
PLC Station No.	0 (default)		Refer Module Setting
TCP/IP port	5001(default)		Refer Module Setting

Device address:

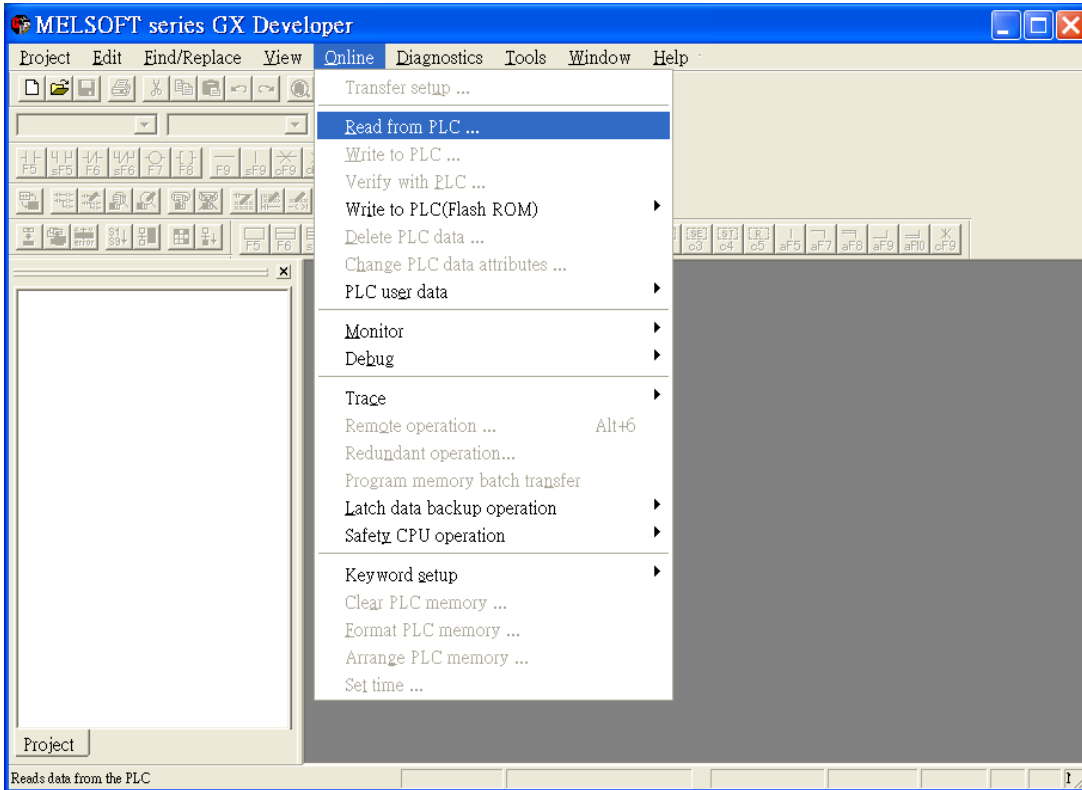
Bit/Word	Device type	Format	Range	Memo
B	X	ooo	0 ~ 377	Input
B	Y	ooo	0 ~ 377	Output Relay
B	M	dddd	0 ~ 7679	Internal Relay
B	S	dddd	0 ~ 4095	Step Relays
B	T	ddd	0 ~ 511	Timer Contacts
B	C	ddd	0 ~ 255	Counter Contacts
B	SM	dddd	8000 ~ 8511	Special Int. Relays
B	D_Bit	dddd(dd)	0-799915	Data Register Bit Access
W	TV	ddd	0 ~ 511	Timer Value
W	R	dddddd	0 ~ 32767	File Register
W	CV	ddd	0 ~ 199	Counter Value
W	D	dddd	0 ~ 7999	Data Registers
W	CV2	ddd	200 ~255	Counter Value
W	SD	dddd	8000 ~ 8511	Special Data Registers

ddd: (Decimal), hhh:(Hexadecimal), ooo:(Octal).

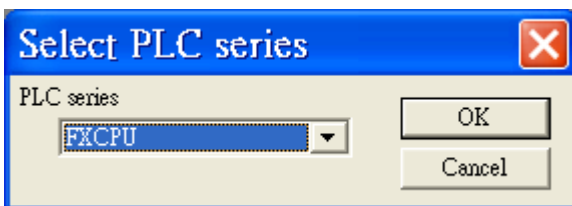
Fx3u-ENET module setting:

Before using Ethernet module, using GX Developer / FX Configurator-EN to set the Ethernet module, the FX3u-ENET module settings as below steps.

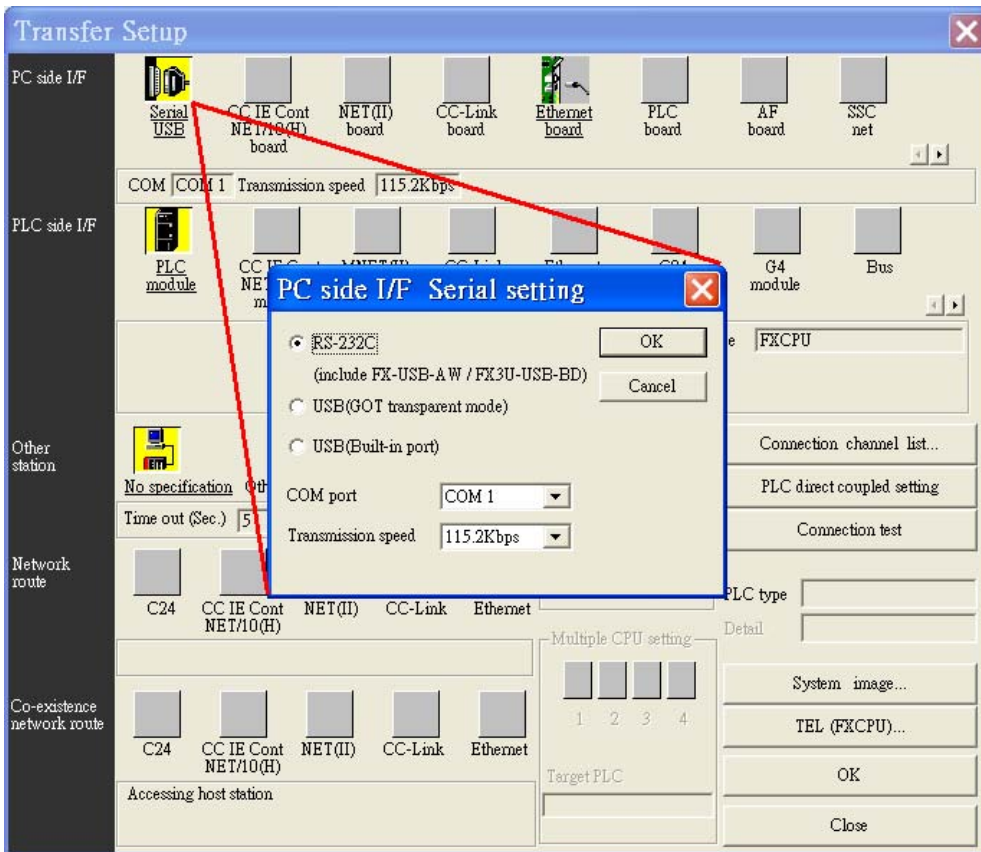
1. Open GX Developer, select “Read from PLC” in Online list.



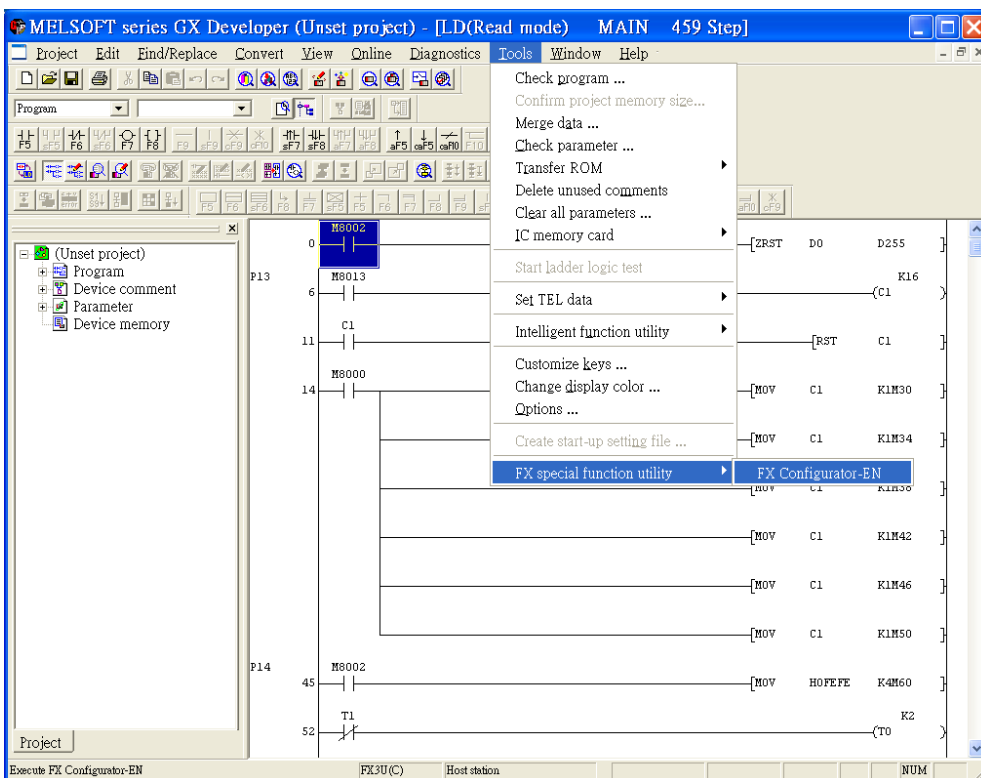
2. Select “FXCPU” in PLC series.



3. Users have to connect PLC via series port for setting IP address at first time.

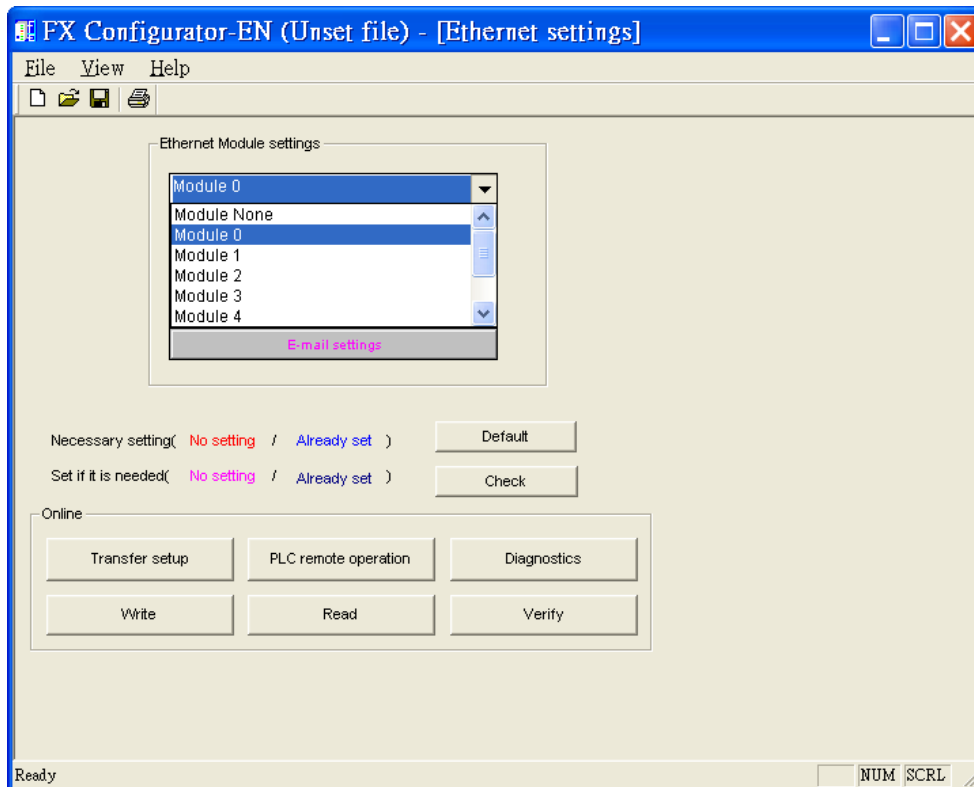


4. After finishing the PLC settings, select Tools/FX special function utility/FX Configurator-EN

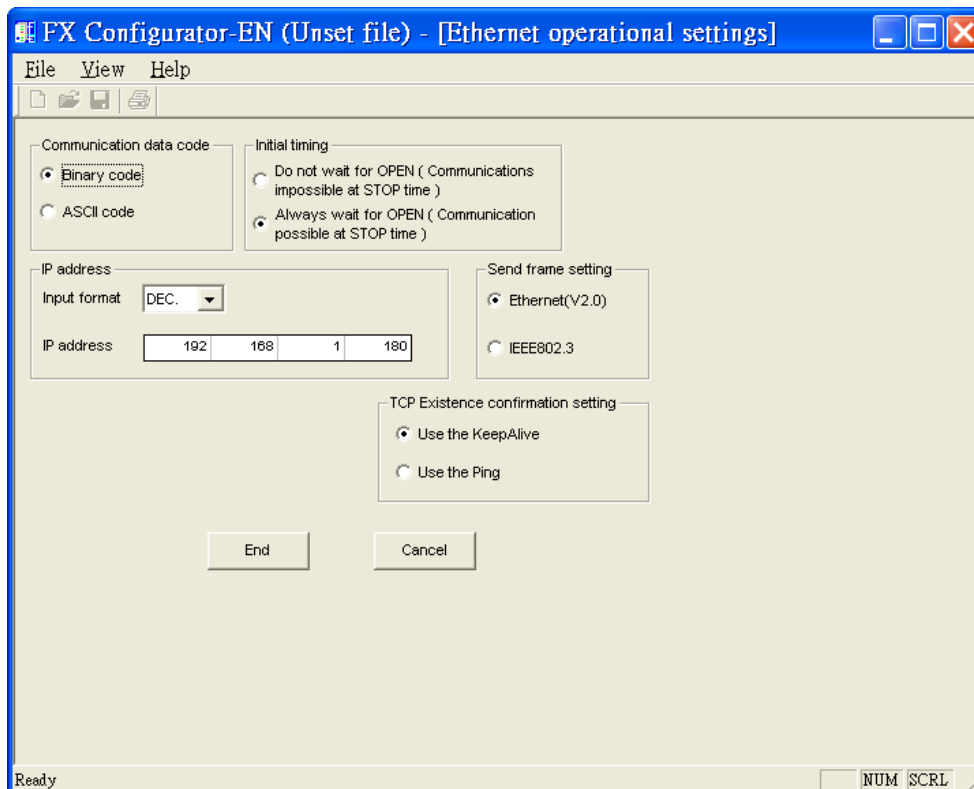


5. Select "Module 0" in Ethernet Module settings.

(If more than one module, please setting modules step by step)



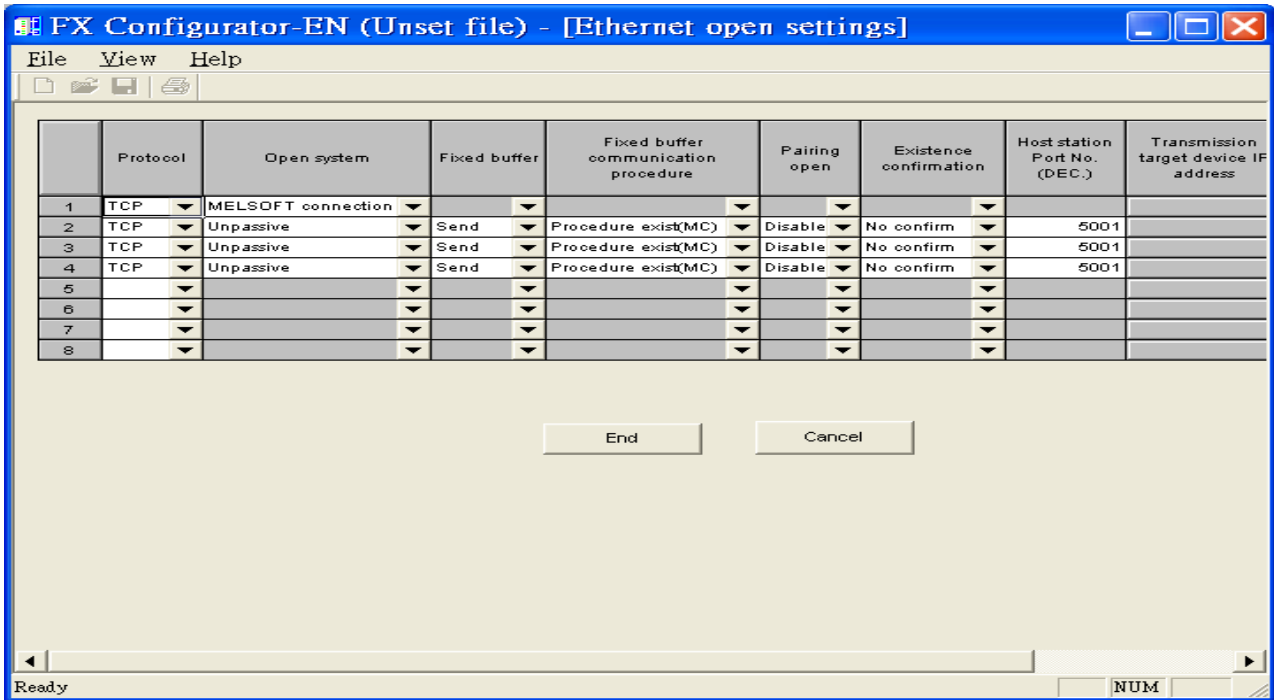
6. In Ethernet operational settings, select the related parameters and IP address and then press "End" to finish the settings.



7. In Ethernet open settings, press "End" after setting the below parameters.

1	TCP	MELSOFT connection						
2	TCP	Unpassive	Send	Procedure exist(MC)	Disable	No confirm	5001	
3	TCP	Unpassive	Send	Procedure exist(MC)	Disable	No confirm	5001	
4	TCP	Unpassive	Send	Procedure exist(MC)	Disable	No confirm	5001	

(The first Protocol means using GX Developer to communicate with module, The max. "Fixed buffer communication procedure" is 4 units.)



8. After setting the parameters to PLC, restart for using Ethernet communication.

