

AB PLC5

<http://www.ab.com>

HMI Setting:

Parameters	Recommend	Option	Notes
PLC type	AB PLC5		
Com port	RS232		
Baud rate	19200	9600, 19200	
Parity bit	None	Even, Odd, None	
Data Bits	8	8	
Stop Bits	1	1	
HMI Station No.	0		
PLC Station No.	1	1-31	

PLC Setting:

Communication mode	DF1 Full Duplex protocol 19200, None, 8, 1 (default)
--------------------	---

Device address:

Bit/Word	Device Type	Format	Range	Memo
B	I1	ddd(dd)	ddd:0~254 (dd): 0~15	Input (I)
B	O0	ddd(dd)	ddd:0~254 (dd): 0~15	Output (O)
B	B3	ddd(dd)	ddd:0~254 (dd): 0~15	Bit data file (B3)
B	B10~13	ddd(dd)	ddd:0~254 (dd): 0~15	Bit data file (B10~13)
W	T4SV	ddd	ddd:0~254	Timer Preset Value (T4)
W	T4PV	ddd	ddd:0~254	Timer Accumulator Value (T4)
W	C5SV	ddd	ddd:0~254	Counter Preset Value (C5)
W	C5PV	ddd	ddd:0~254	Counter Accumulator Value (C5)
W	N7	ddd	ddd:0~254	Integer data file (N7)
W	N10~15	ddd	ddd:0~254	Integer data file (N10~15)
W	F8	ddd	ddd:0~254	Floating point data file (F8)
W	Nfn	fffddd	File no. fff:7,9~254 Element no. ddd:0~254	Integer data file (V2.5.0 or newer)
W	Ffn	fffddd	File no. fff:8,9~254 Element no. ddd:0~254	Floating point data file (V2.5.0 or newer)

Allen-Bradley PLC-5 Family PLCs using the DF1 Full Duplex protocol.

For the PLC-5/10, PLC-5/15 and PLC-5/25 the MT8000 should be connected to:

- the DF1 port on the 1785-KE module;

for the PLC-5/11, PLC-5/20, PLC-5/30 and PLC-5/40 the MT8000 should be connected to:

- the Channel 0 Port on the PLC.

Wiring diagram:

RS-232: PLC5 CPU CH0

EasyView MT8000

9P D-SUB

COM1 [RS232]	COM2 [RS232]	COM3 [RS232]
3 TX	4 TX	7 TX
2 RX	6 RX	8 RX
5 GND	5 GND	5 GND

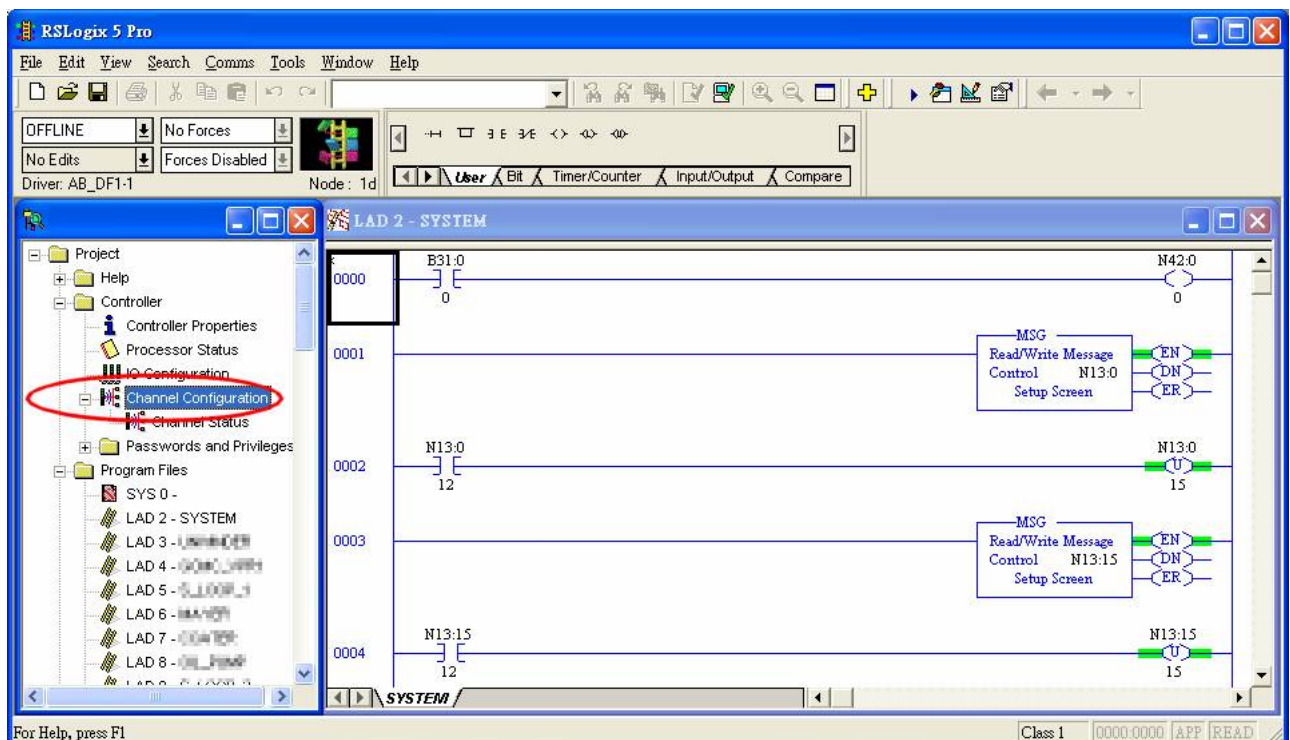
AB CPU CH0 RS-232

25P D-SUB

3 RXD
2 TXD
7 GND

Note:

The default error check of AB PLC5 is BCC, whereas our driver is CRC.



Access “Channel Configuration” from RSLogix5, under Channel 0 tab, please select CRC for Error Detect.

