

Allen-Bradley DH485

Allen-Bradley MicroLogix 1000, 1100, 1200, 1500, SLC 5/03, 5/04, 5/05

<http://www.ab.com>

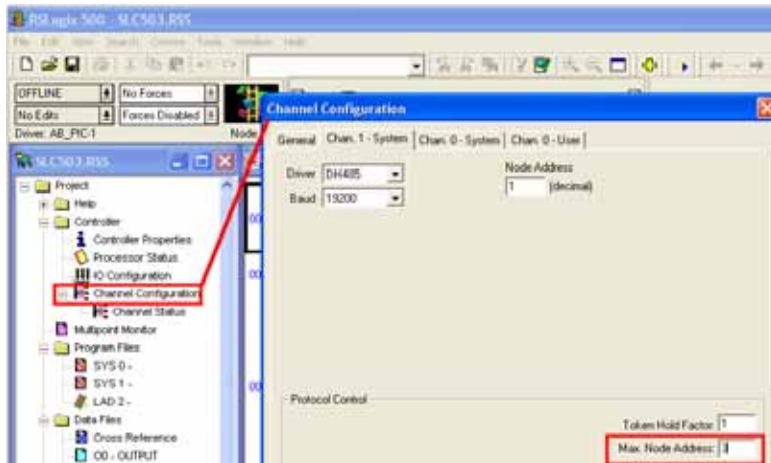
HMI Setting:

Parameters	Recommend	Option	Notes
PLC type	Allen-Bradley DH485		
Com port	RS485 2W	RS232	
Baud rate	19200	9600, 19200	
Parity bit	Even		
Data Bits	8		
Stop Bits	1		
HMI Station No.	0	2	
PLC Station No.	1	1-31	

Online Simulator	YES	
Extend address mode	NO	

PLC Setting:

Communication mode	DH485 protocol 19200 (default) Set the Max. Node Address as exactly how many PLCs you have.
--------------------	--



Device address:

Bit/Word	Device Type	Format	Range	Memo
B	I1	ddd(dd)	ddd:0~254 (dd): 0~15	Input (I)
B	O0	ddd(dd)	ddd:0~254 (dd): 0~15	Output (O)
B	B3	ddd(dd)	ddd:0~254 (dd): 0~15	Bit data file (B3)
B	B10~13	ddd(dd)	ddd:0~254 (dd): 0~15	Bit data file (B10~13)
B	Bfn	fffddd(dd)	File no. fff: 3, 10~254 Element no. ddd: 0~254 Bit no. (dd): 0~15	Bit data file (B3, 10~254)
B	NfnBit	fffddd(dd)	File no. fff: 7, 10~254 Element no. ddd: 0~254 Bit no. (dd): 0~15	Integer data file bit level (N7, 10~254)
B	S_Bit	ddd(dd)	ddd:0~254 (dd): 0~15	Status file
W	T4SV	ddd	ddd:0~254	Timer Preset Value (T4)
W	T4PV	ddd	ddd:0~254	Timer Accumulator Value (T4)
W	C5SV	ddd	ddd:0~254	Counter Preset Value (C5)
W	C5PV	ddd	ddd:0~254	Counter Accumulator Value (C5)
W	TfnSV	fffddd	File no. fff:0~254 Element no. ddd:0~254	Timer Preset Value
W	TfnPV	fffddd	File no. fff:0~254 Element no. ddd:0~254	Timer Accumulator Value
W	CfnSV	fffddd	File no. fff:0~254 Element no. ddd:0~254	Counter Preset Value
W	CfnPV	fffddd	File no. fff:0~254 Element no. ddd:0~254	Counter Accumulator Value
W	N7	ddd	ddd:0~254	Integer data file (N7)
W	N10~15	ddd	ddd:0~254	Integer data file (N10~15)
W	F8	ddd	ddd:0~254	Floating point data file (F8)
W	Nfn	fffddd	File no. fff:0~254 Element no. ddd:0~254	Integer data file (N7, 10~254)
W	S	ddd	ddd:0~254	Status file

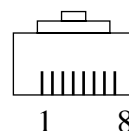
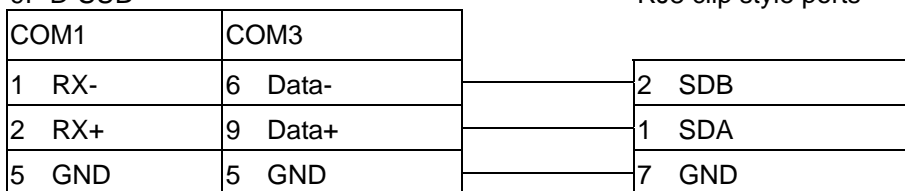
Wiring diagram:

RS-485: SLC500 Fixed type, SLC5/01,02,03 CH1.

MT8000 can't connect to 1747-AIC PERIPHERAL PORT

MT8000 PLC[485]
9P D-SUB

AB SLC500 DH485
RJ8 clip style ports

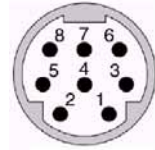
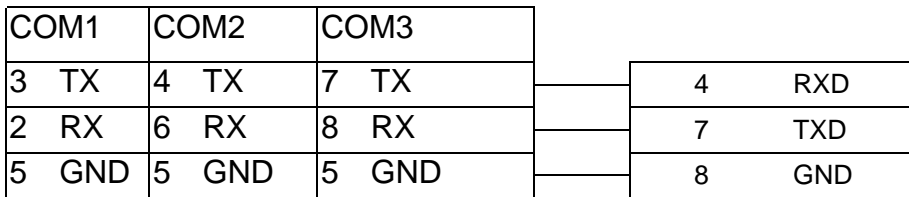


RJ8 connector

RS-232: MicroLogix 1000, 1100, 1200, 1500 must set DH485 protocol.

MT8000 RS232
9P D-SUB

MicroLogix RS232
mini-DIN 8pin



RS-232: SLC5/03,04,05 CH0 must set DH485 protocol.

MT8000 RS232
9P D-SUB Female

AB CPU CH0
RS-232
9P D-SUB Male

