

Allen Bradley CompactLogix/FlexLogix

Allen-Bradley ControlLogix, CompactLogix, FlexLogix CH0 DF1

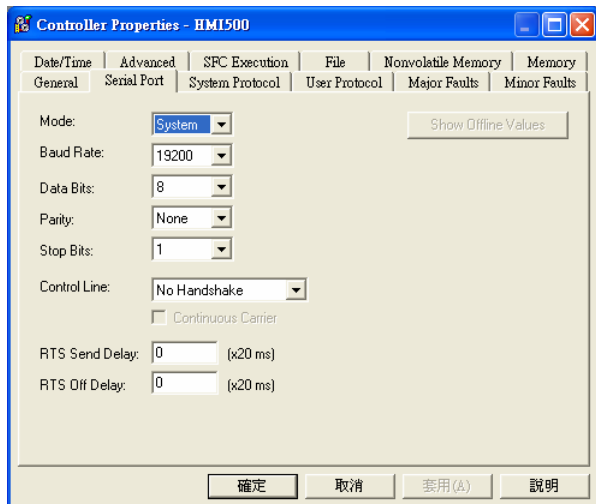
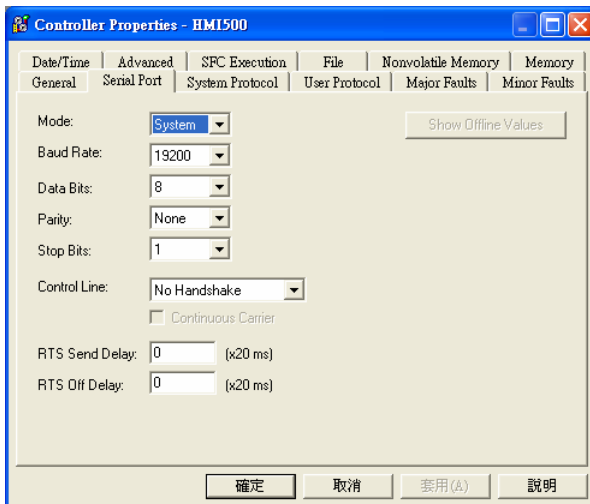
<http://www.ab.com>

HMI Setting:

Parameters	Recommend	Option	Notes
PLC type	Allen-Bradley CompactLogix/FlexLogix		
Com port	RS232		
Baud rate	19200	9600, 19200, 38400	
Parity bit	None	Even, Odd, None	
Data Bits	8	8	
Stop Bits	1	1	
HMI Station No.	0		
PLC Station No.	1	1-31	

PLC Setting:

Communication mode	DF1 Full Duplex protocol 19200, None, 8, 1 (default) Error Check: BCC, Station Address: 1
--------------------	--



Device address:

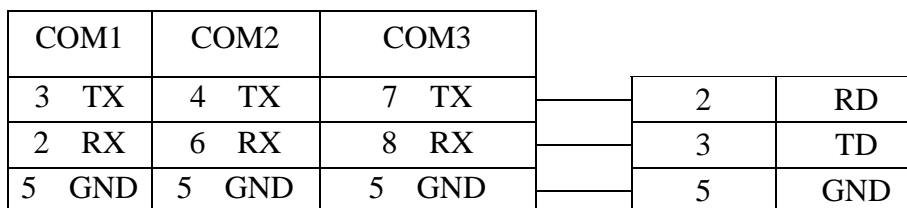
Bit/Word	Device Type	Format	Range	PLC Tag
B	B_BOOL	fffddd(dd)	File no. ff: 3, 10~255 Element no. ddd: 0~255 Bit no. (dd): 0~15	Bit data file (B003, B010~B255)
B	N_BOOL	fffddd(dd)	File no. ff: 7, 10~255 Element no. ddd: 0~255 Bit no. (dd): 0~15	Integer data file bit level (N007, N010~N255)
W	Bx_INT	fffddd	File no. fff: 3, 10~255 Element no. ddd: 0~255	Bit data file word level(B003, B010~B255)
DW	Nx_INT	fffddd	File no. fff:0~255 Element no. ddd:0~255	Integer data file (N007, N010~N255)
DW	Tx.PRE	fffddd	File no. fff: 4, 10~255 Element no. ddd: 0~255	Timer Preset Value (T004, T010~T255)
DW	Tx.ACC	fffddd	File no. fff: 4, 10~255 Element no. ddd: 0~255	Timer Accumulator Value (T004, T010~T255)
DW	Cx.PRE	fffddd	File no. fff: 5, 10~255 Element no. ddd: 0~255	Counter Preset Value (C005, C010~C255)
DW	Cx.ACC	fffddd	File no. fff: 5, 10~255 Element no. ddd: 0~255	Counter Accumulator Value (C005, C010~C255)
F	F8_REAL	ddd	ddd:0~255	Floating point data file (F008)
F	Fx_REAL	fffddd	File no. fff:0~255 Element no. ddd:0~255	Floating point data file (F008, F010~F255)

Wiring diagram:

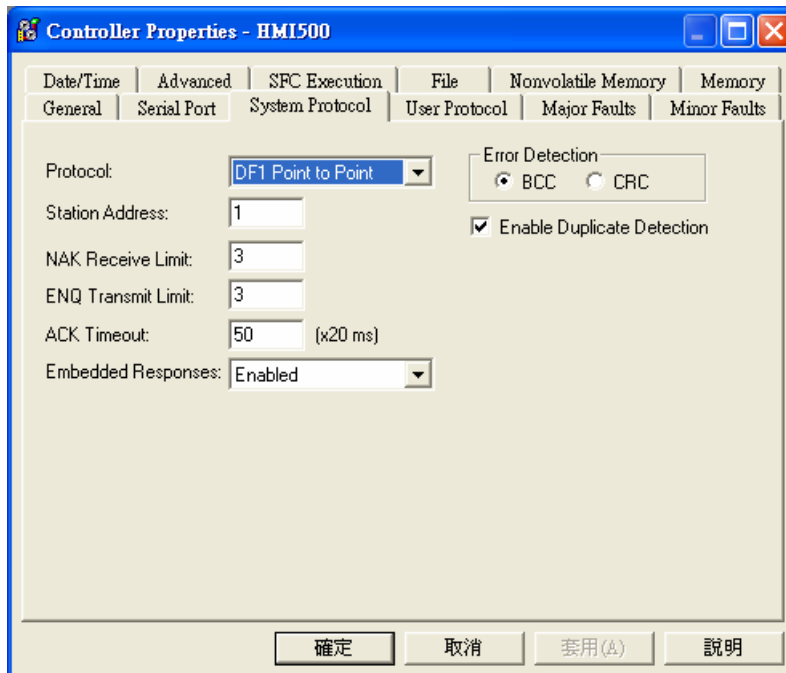
RS-232: ControlLogix, CompactLogix CPU CH0

MT8000 RS232
9P D-SUB Female

AB CPU CH0
RS-232
9P D-SUB Male



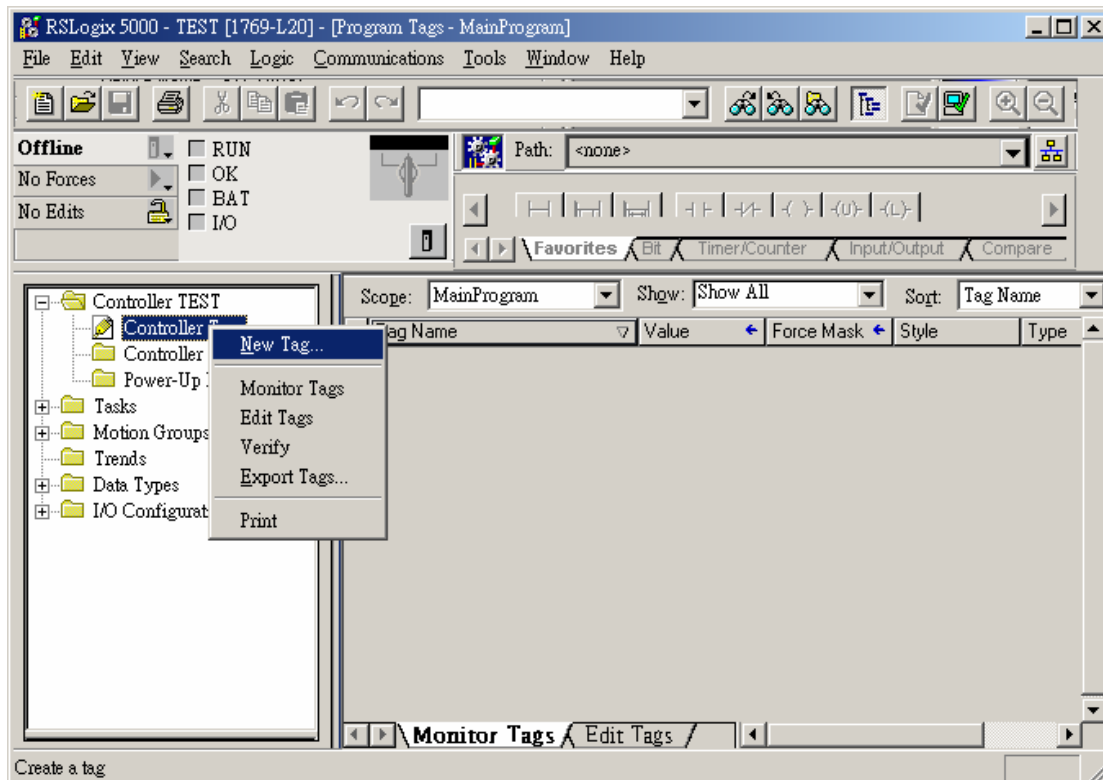
ControlLogix, CompactLogix CPU CH0 setting:



Create the Tag:

The name format must use 4 chars like B003, T004, C005, N007, F008.

Two or three chars are not available. For example B03 or B3.



New Tag [X]

Name:

Description:

Tag Type: Base
 Alias
 Produced consumers
 Consumed

Data Type:

Scope:

Style:

Select Data Type [X]

Data Types:

- FBD_TIMER
- FBD_TRUNCATE
- FILTER_HIGH_PASS
- FILTER_LOW_PASS
- FILTER_NOTCH
- FLIP_FLOP_D
- FLIP_FLOP_JK
- FUNCTION_GENERATOR
- HL_LIMIT
- INT**
- INTEGRATOR

Array Dimensions

Dim 0	Dim 1	Dim 2
<input type="text" value="255"/>	<input type="text" value="0"/>	<input type="text" value="0"/>